



Swami Swatantranand Memorial College, Dinanagar

(Affiliated to G.N.D.U Amritsar | Accredited with 'A' Grade by NAAC)

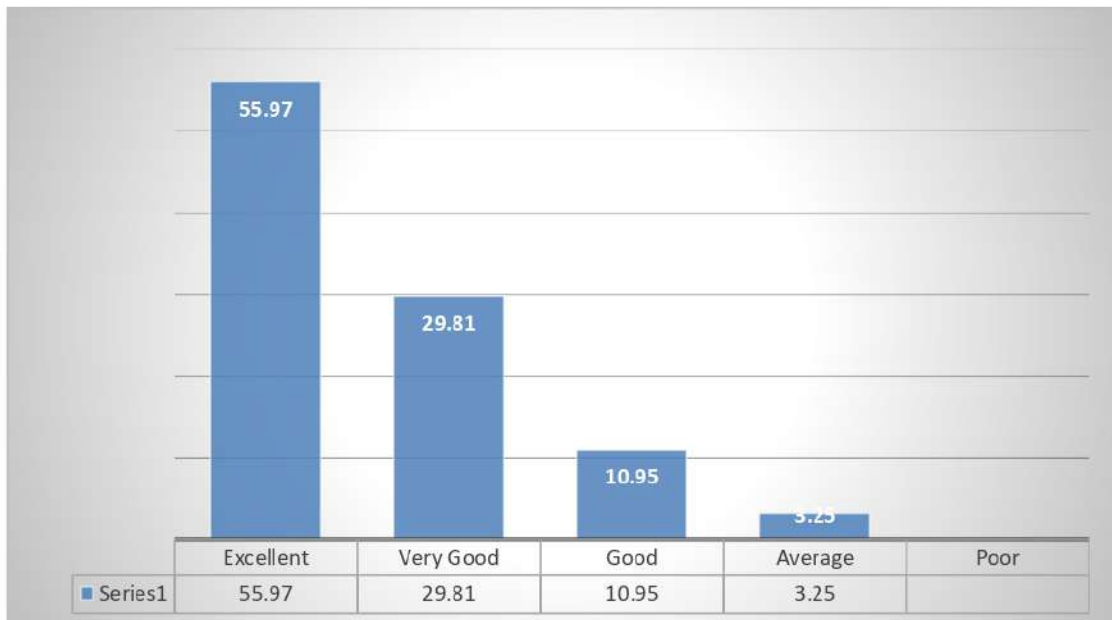
Alumni Feedback Analysis

Session (2021-22)

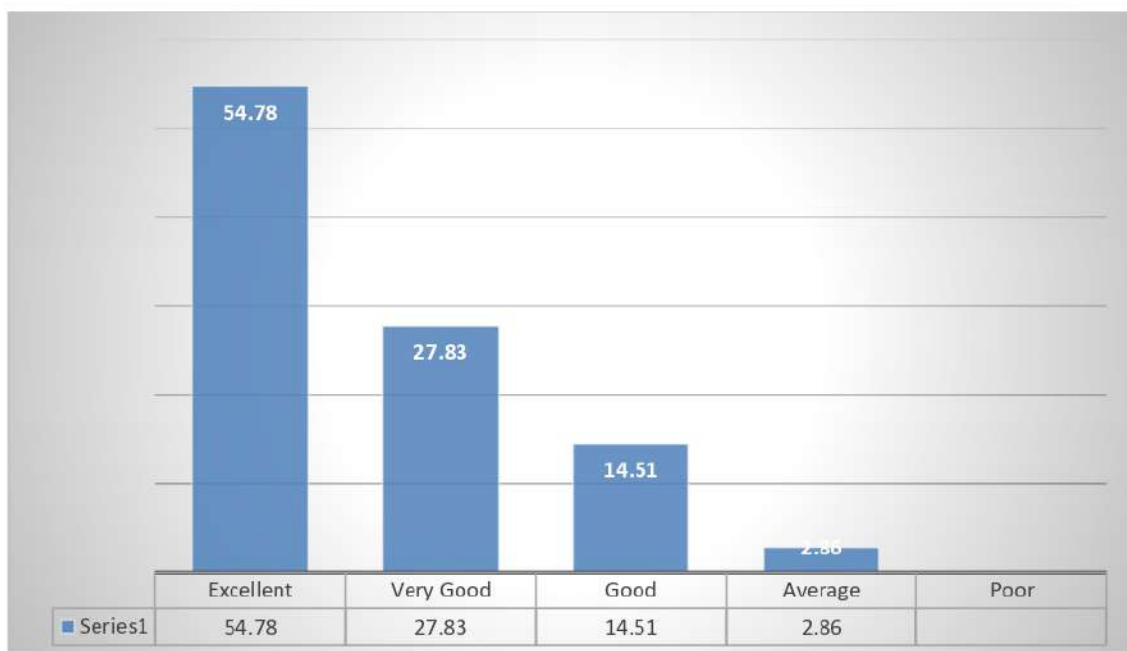
Particulars	Excellent	Very Good	Good	Average	Poor	Total
Do you feel proud to be associated with SSMC as an Alumni?	567	302	111	33	0	1013
Overall development of students by various kinds of activities organized by the college.	555	282	147	29	0	1013
Are you willing to contribute in the development of the institute?	519	330	139	25	0	1013
How do you rate the handling of student's grievance?	551	269	154	39	0	1013
Laboratories and equipment for practical experiences?	575	262	136	40	0	1013
Education imparted at SSMC in present scenario?	551	281	149	32	0	1013
Placement opportunities on campus and Off campus provided by the college.	557	276	141	39	0	1013
Do you like to join the Institute Alumni Association?	557	269	155	32	0	1013

How do you rate the Course content?	559	247	173	34	0	1013
How do you rate laboratories/library/Seminar Hall/Reading Room facilities ?	562	246	167	38	0	1013
How do you rate computer facilities?	567	242	169	35	0	1013
How do you rate Internet & Wi-Fi facilities?	515	304	163	31	0	1013
How do you rate sport and cultural facilities?	549	275	153	36	0	1013
How do you rate classroom facilities?	517	299	163	34	0	1013
How do you rate Canteen Facilities/ Hostel facilities?	527	313	138	35	0	1013
How do you rate Overall Infrastructure of the college?	547	301	128	37	0	1013
Rate the adequate knowledge gained during your course of study.	573	231	167	42	0	1013
Have you availed career counseling and guidance for higher studies from T&P cell?	509	299	145	60	0	1013
Will you recommend your relative/friends to enroll at SSMC?	500	302	162	49	0	1013

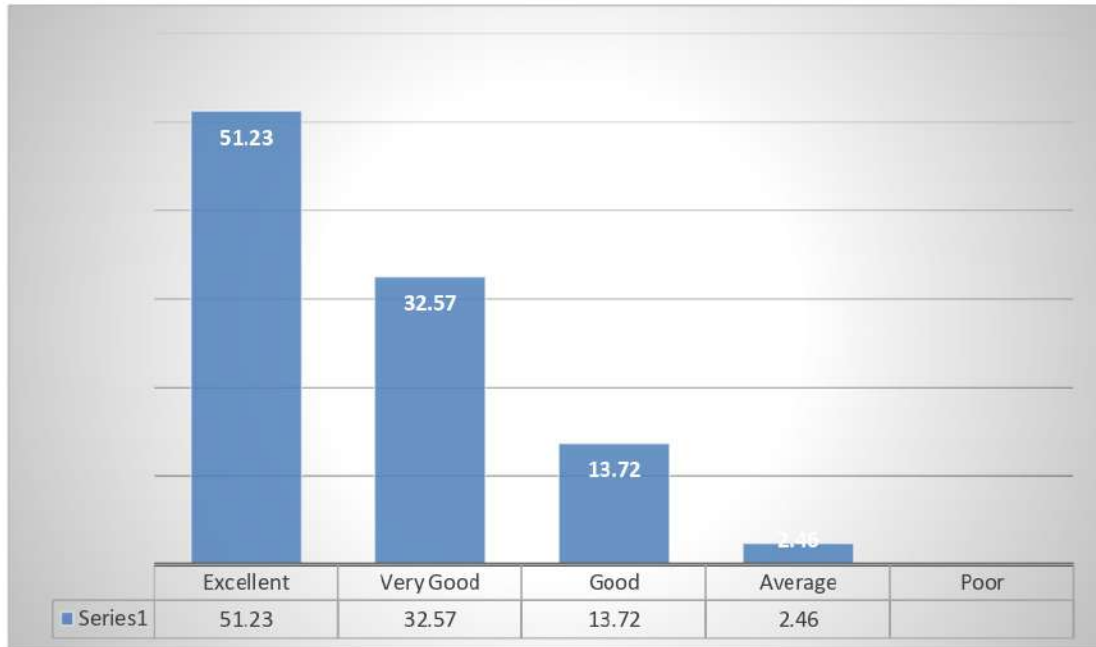
✓ **Do you feel proud to be associated with SSMC as an Alumni?**



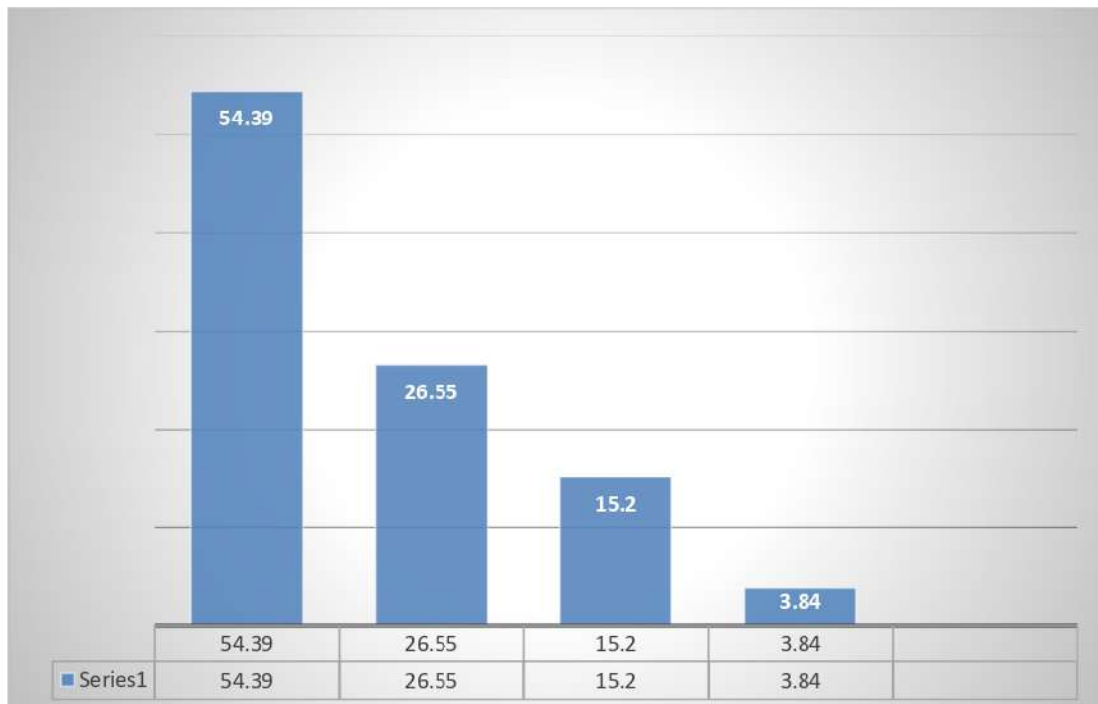
✓ **Overall development of students by various kinds of activities organized by the college**



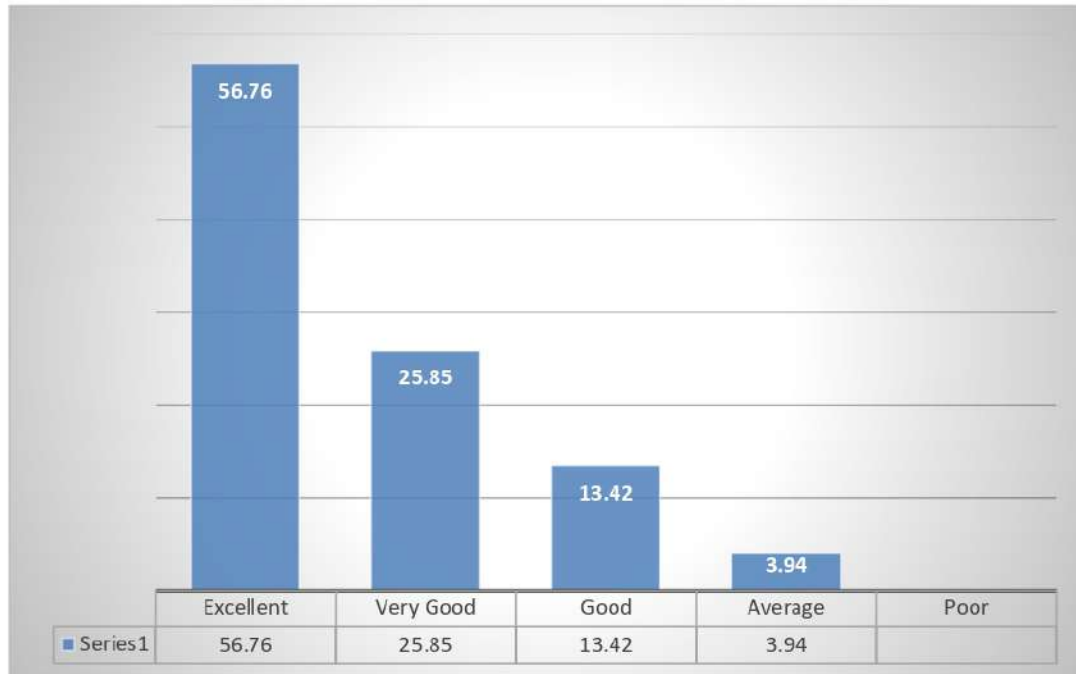
✓ **Are you willing to contribute in the development of the institute?**



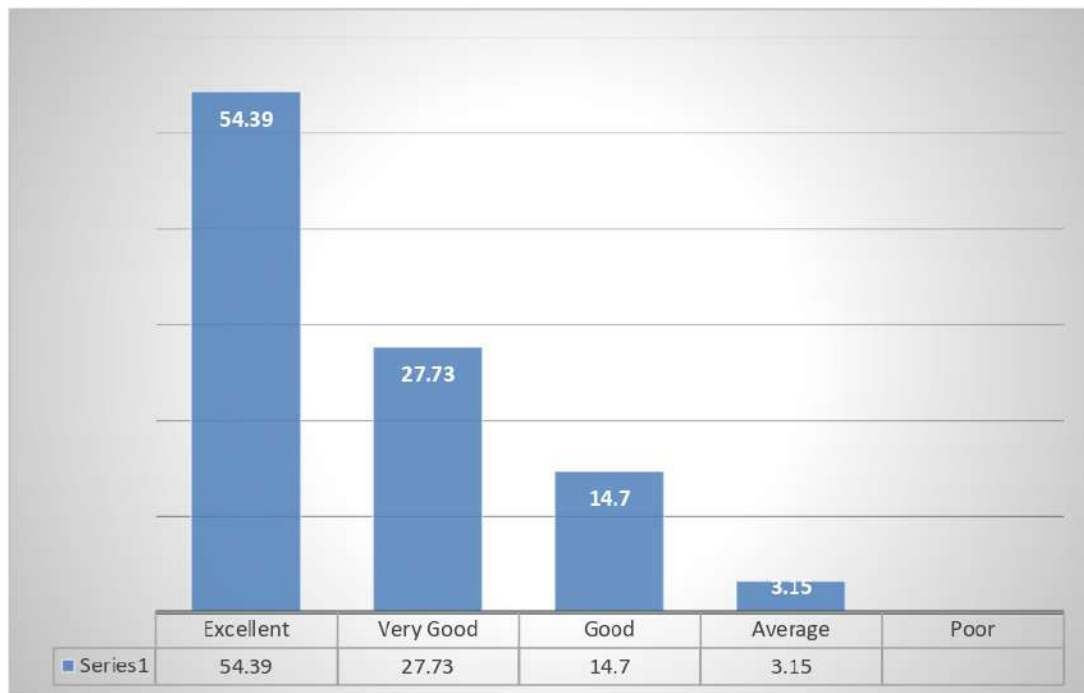
✓ **How do you rate the handling of student's grievance?**



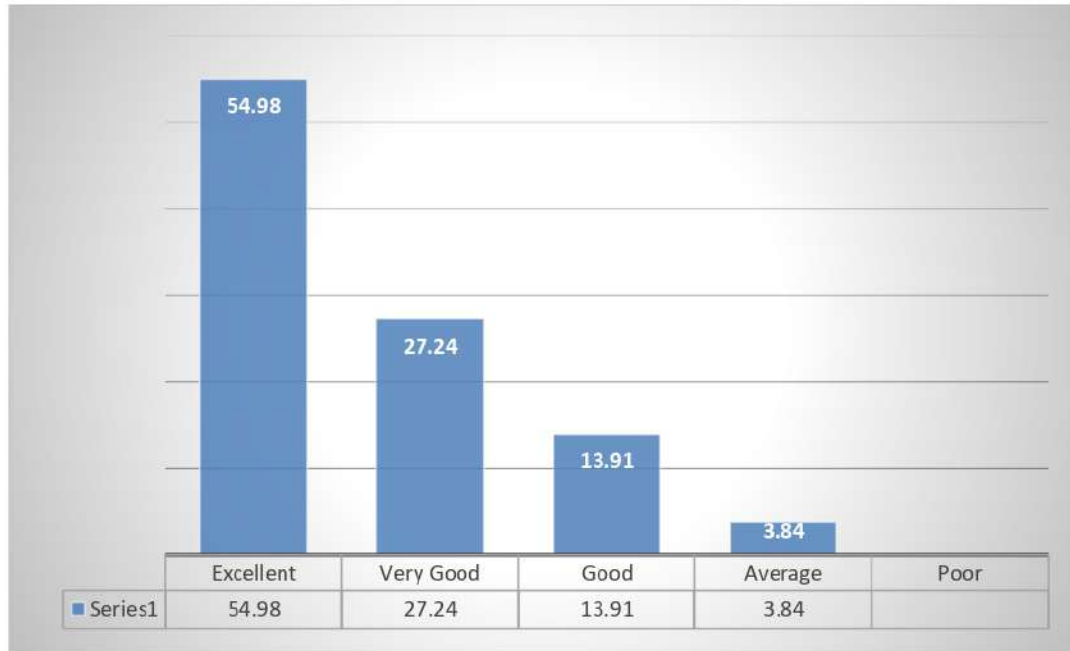
✓ Laboratories and equipment for Practical Experiences



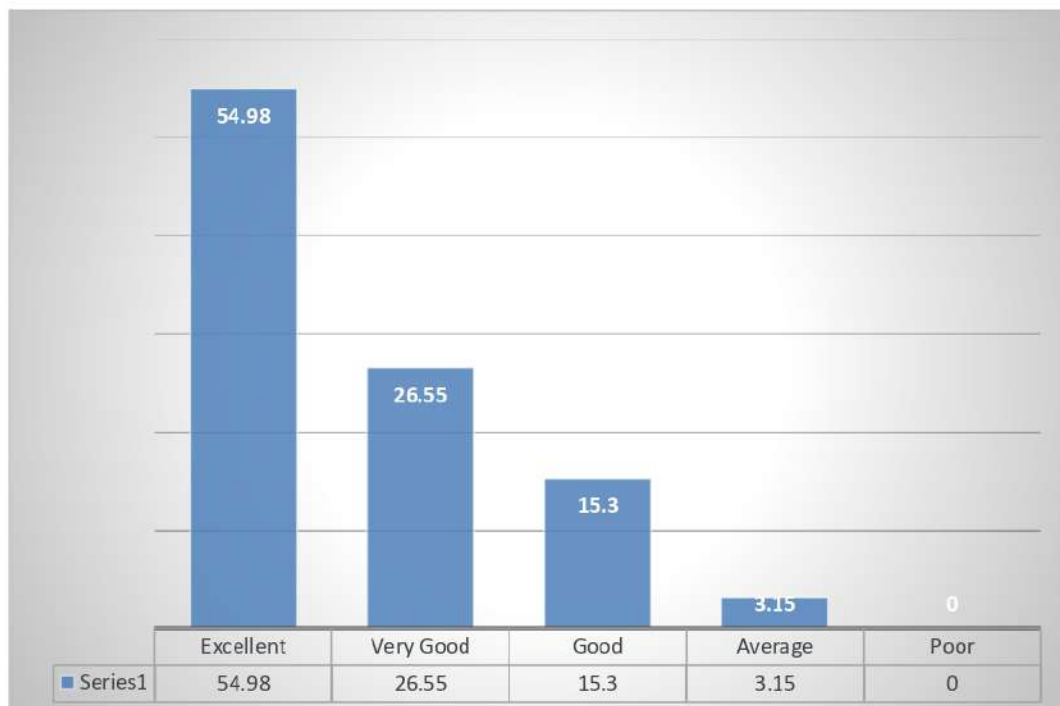
✓ Education imparted at SSMC in present scenario



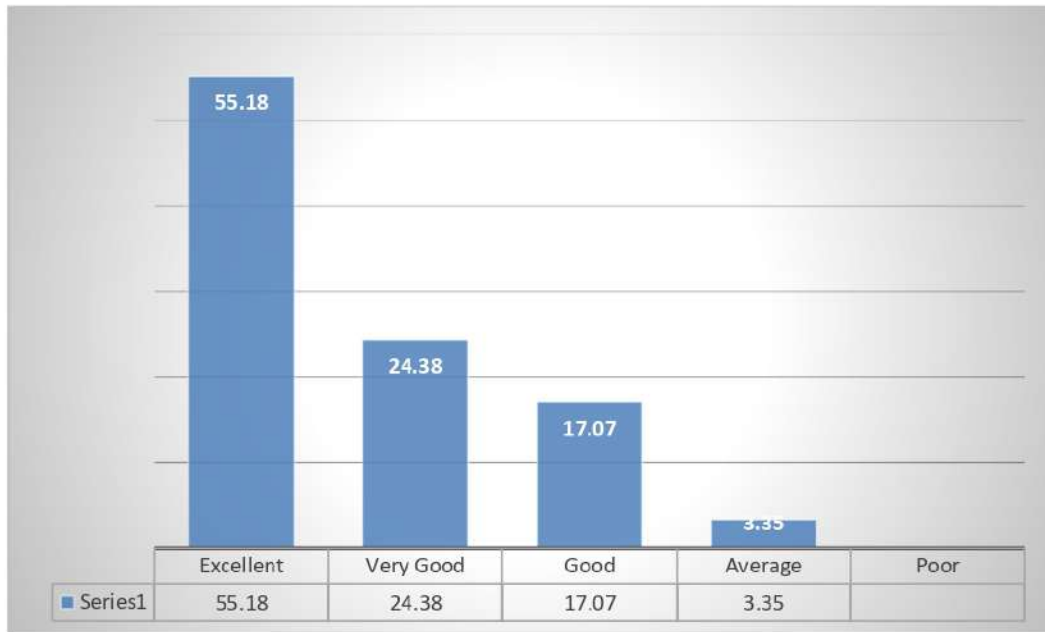
✓ **Placement opportunities on campus and off campus provided by the college**



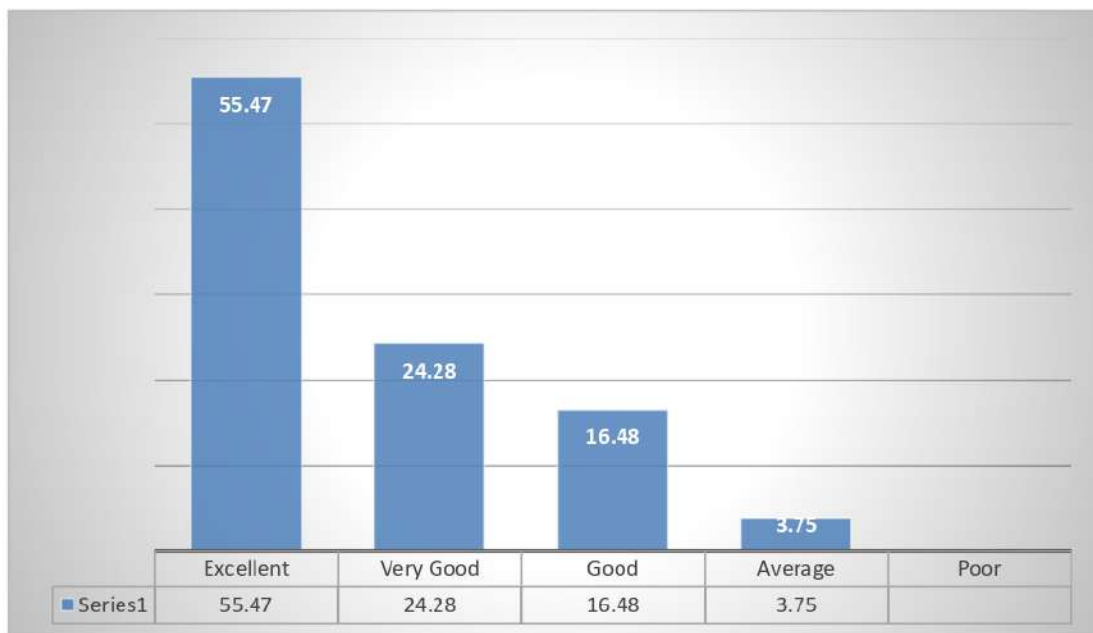
✓ **Do you like to join the Institute Alumni Association?**



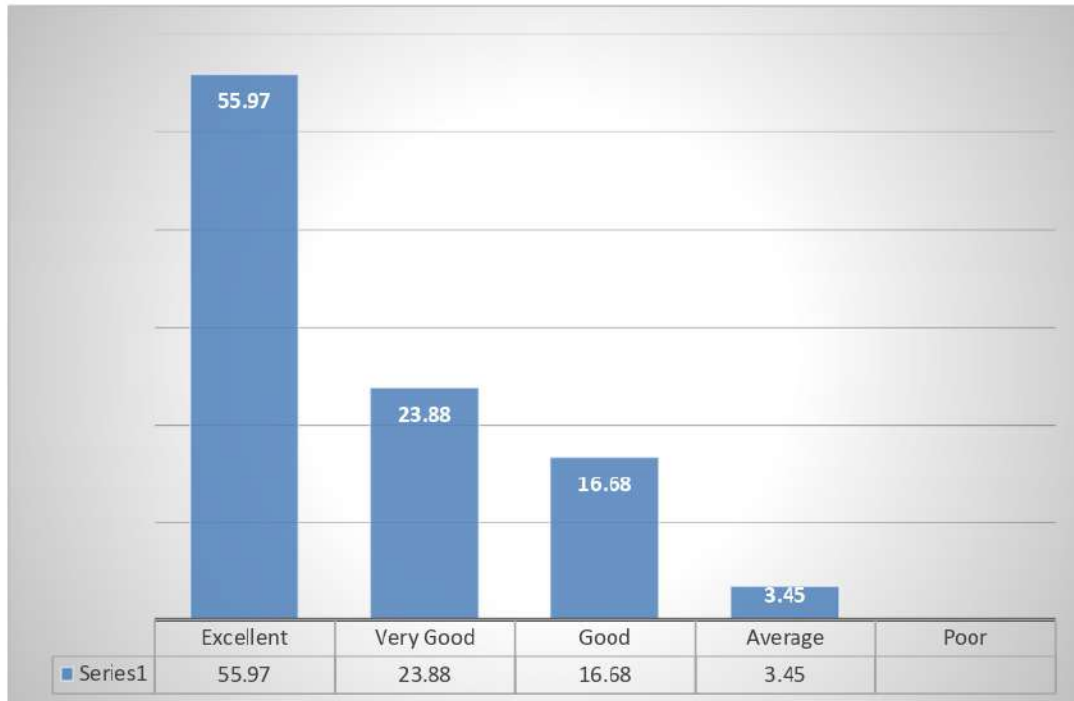
✓ **How do you rate the Course content?**



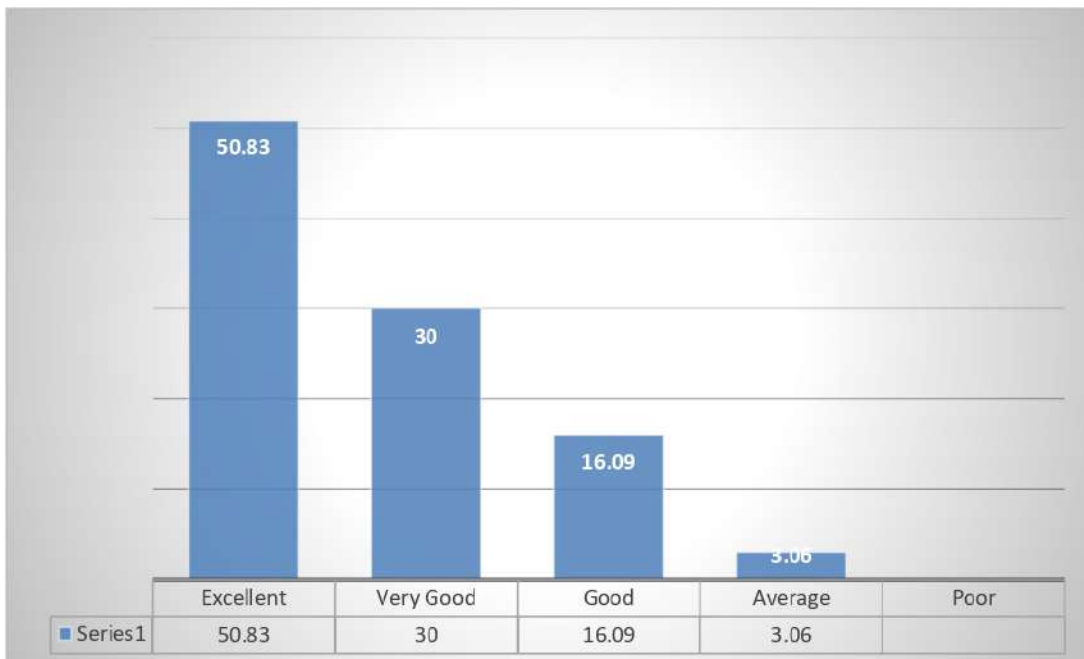
✓ **How do you rate laboratories/library/seminar/reading room facilities?**



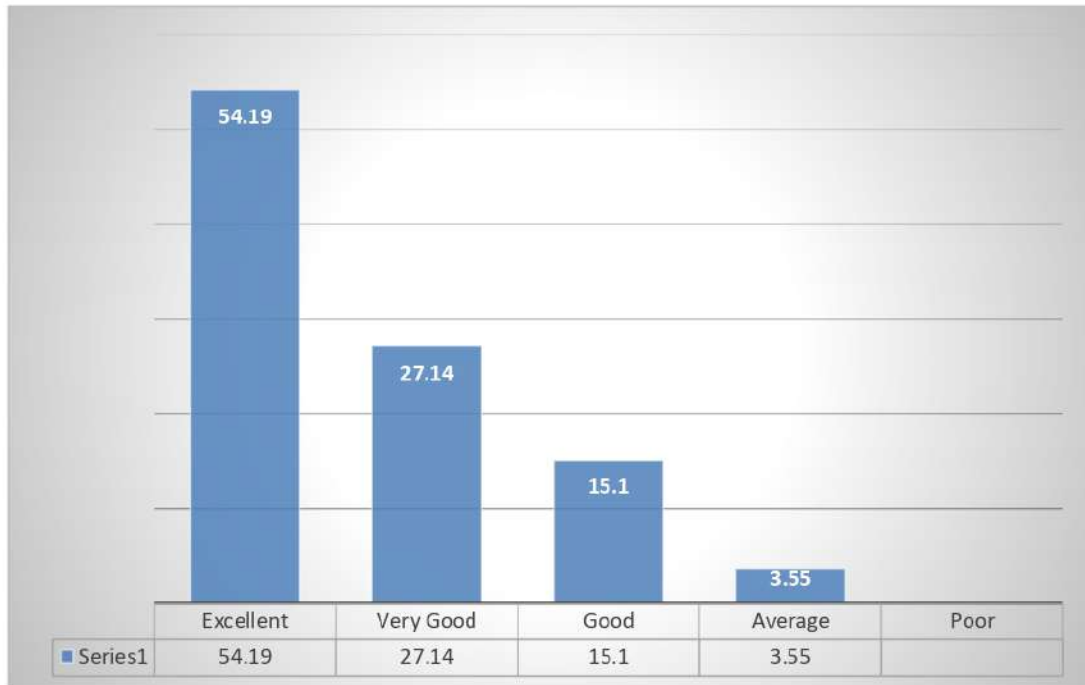
✓ **How do you rate computer facilities?**



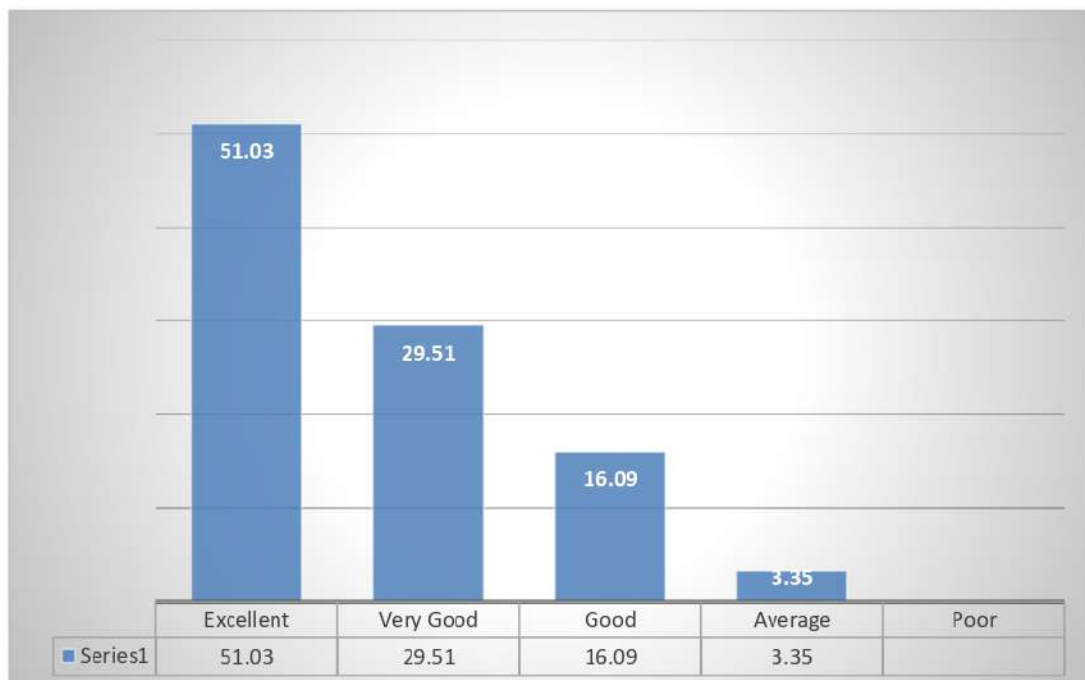
✓ **How do you rate Internet & Wi-Fi Facilities?**



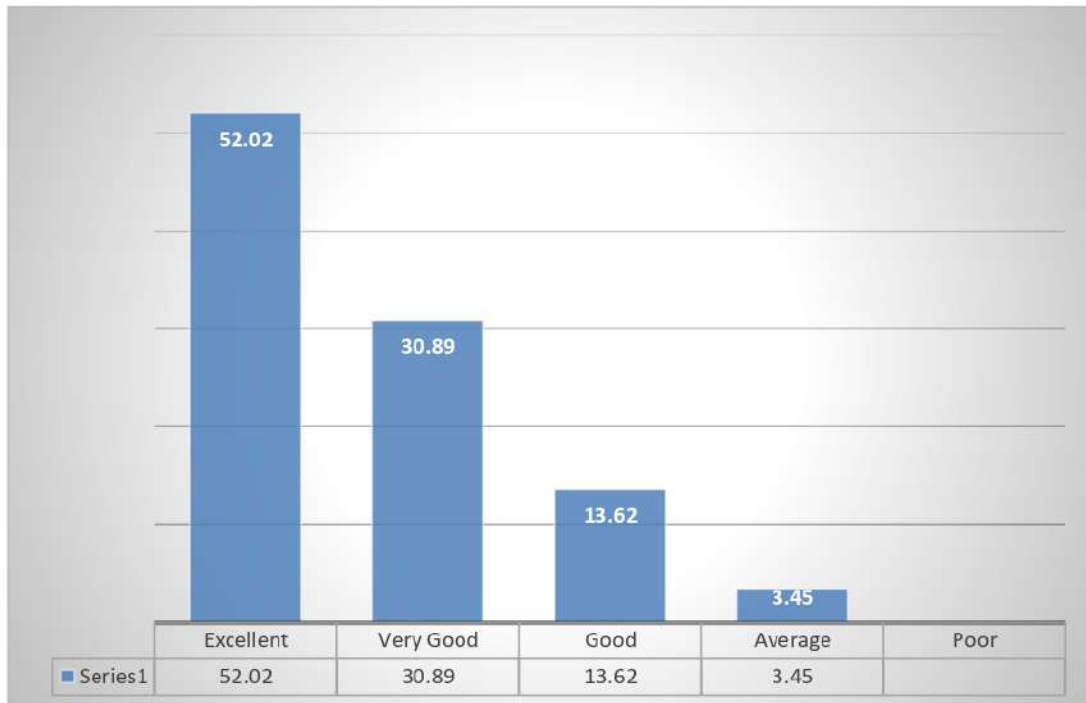
✓ **How do you rate sport and cultural facilities?**



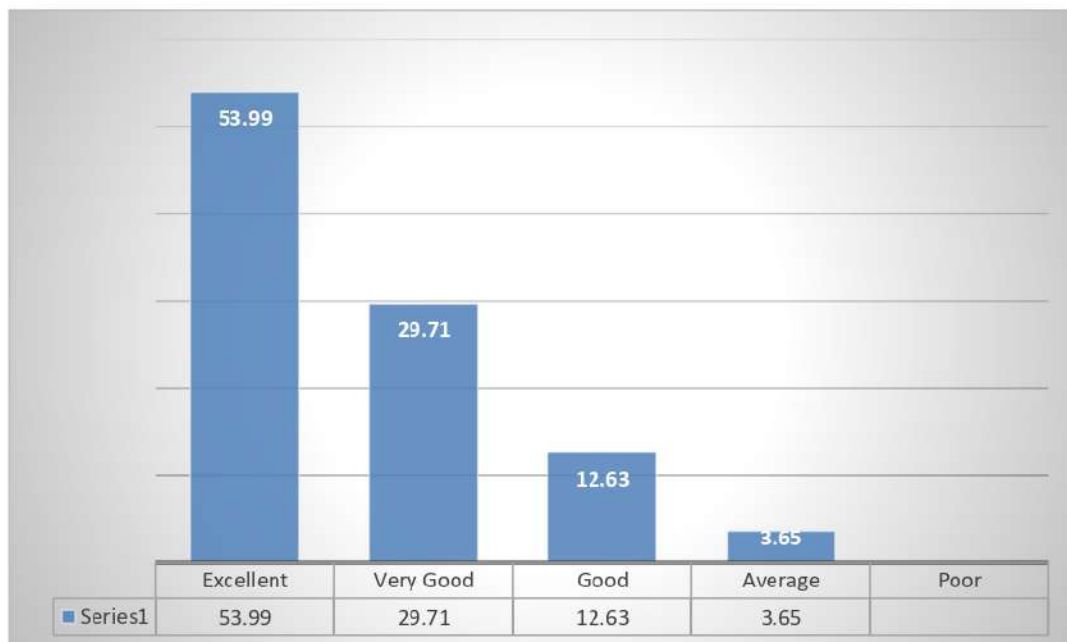
✓ **How do you rate classroom facilities?**



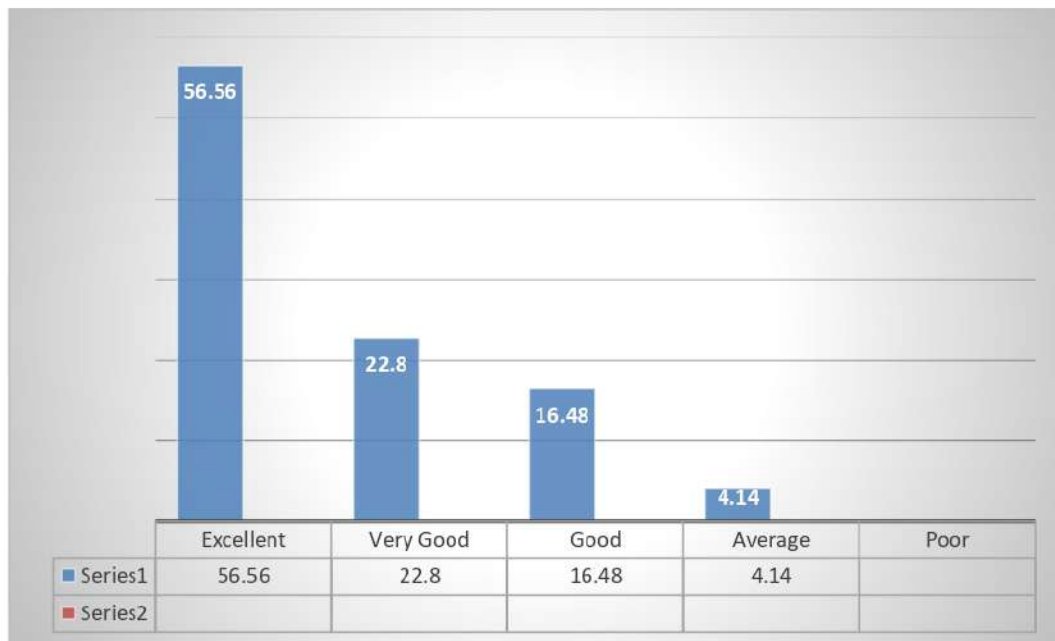
✓ **How do you rate Canteen Facilities/ Hostel facilities?**



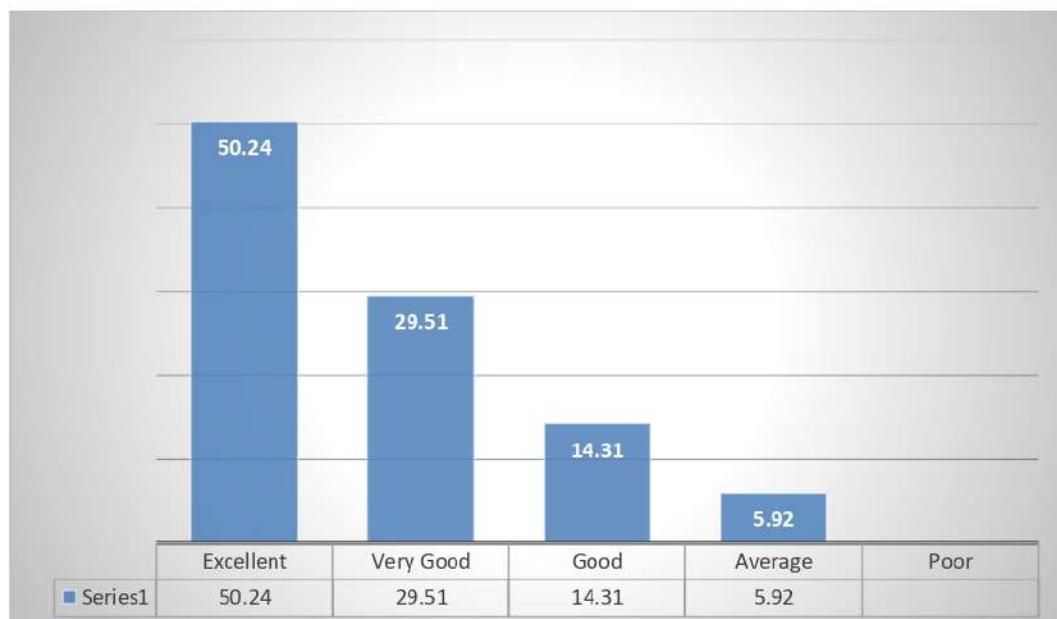
✓ **How do you rate Overall Infrastructure of the college?**



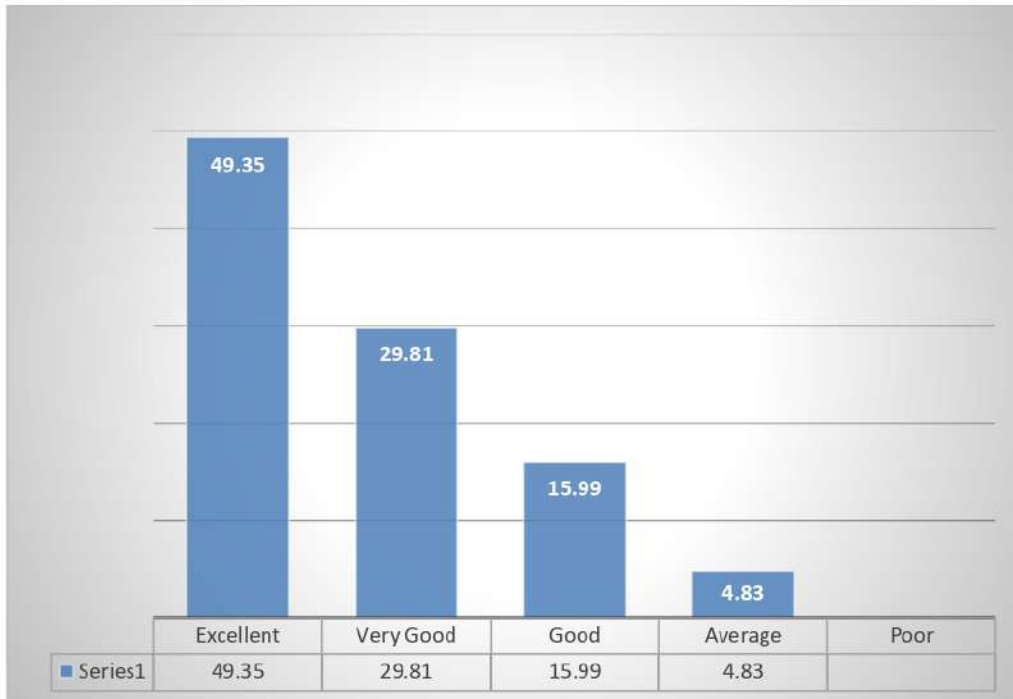
✓ **Rate the adequate knowledge gained during your course of study**



✓ **Have you availed career counseling and guidance for higher studies from T&P cell?**



✓ Will you recommend your relative/friends to enroll at SSMC?




Principal
SWAMI SUKTANIRVANAK MEMORIAL COLLEGE
Dhanuagar (Gundlupet)