



Swami Swatantranand Memorial College, Dinanagar
(Affiliated to G.N.D.U Amritsar | Accredited with 'A' Grade by NAAC)

Teachers' Feedback Analysis

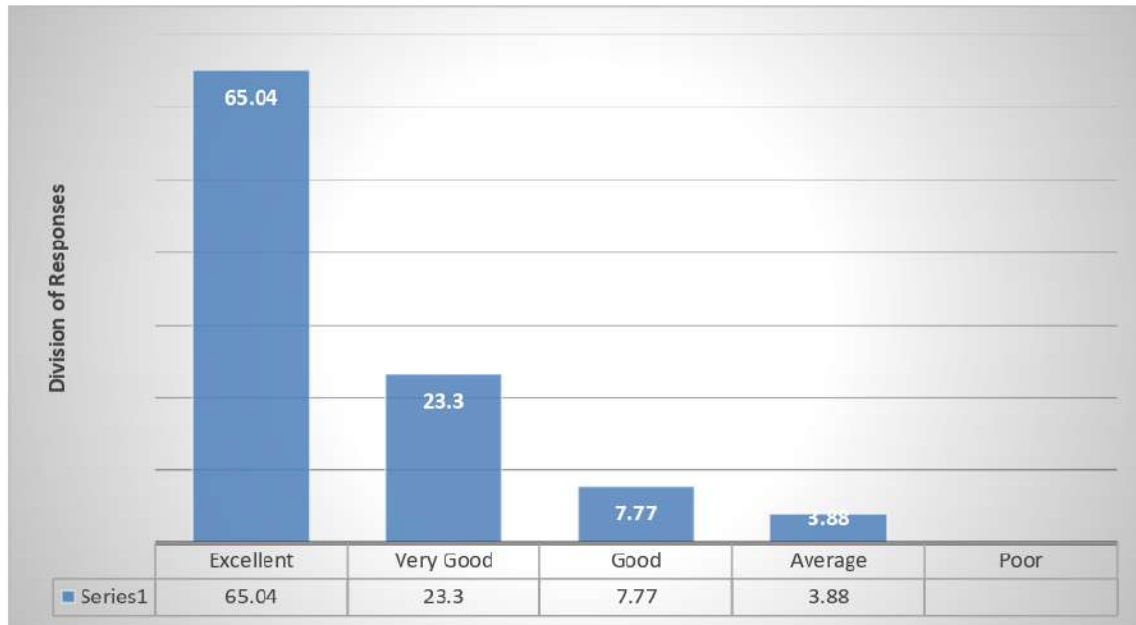
Session (2021-22)

Teachers' Feedback Analysis

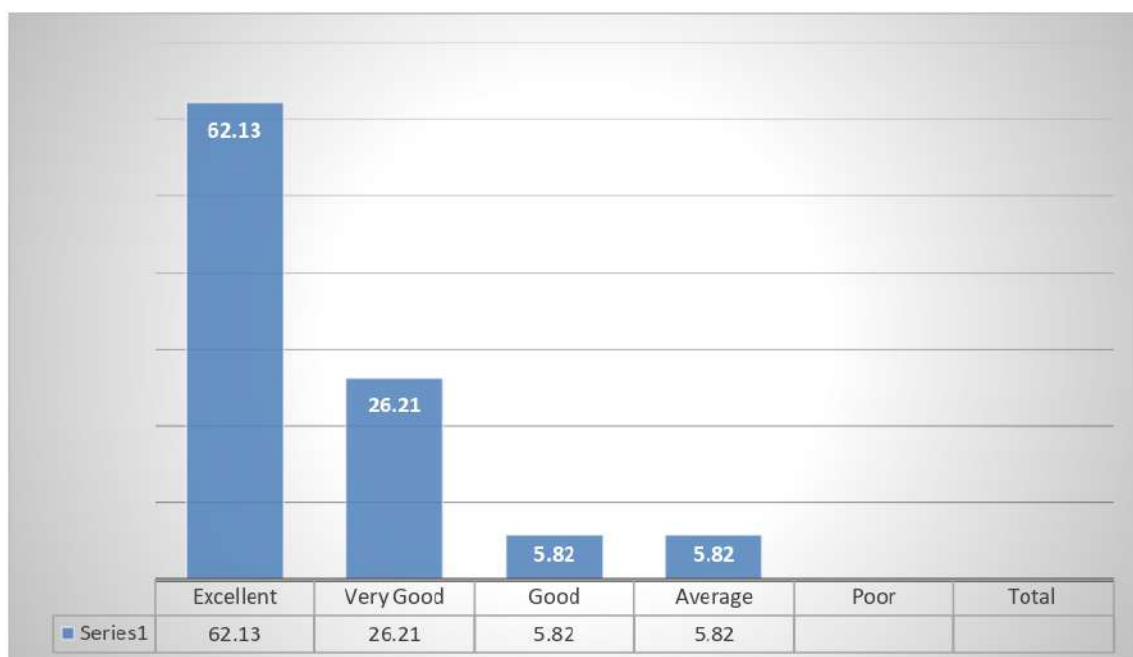
| Particulars | Excellent | Very Good | Good | Average | Poor | Total |
|---|------------------|------------------|-------------|----------------|-------------|--------------|
| Does the syllabus provide freedom to adopt new technique / strategies of testing and assessment of students? | 67 | 24 | 8 | 4 | 0 | 103 |
| Is the syllabus designed to bridge the gap between theory / practical /academics and industry? | 64 | 27 | 6 | 6 | 0 | 103 |
| Is the syllabus designed to improve employability index? | 65 | 25 | 7 | 6 | 0 | 103 |
| How do you rate the Labs facilities? | 61 | 27 | 11 | 4 | 0 | 103 |
| Is the academic environment in the college highly favorable? | 69 | 26 | 5 | 3 | 0 | 103 |
| Is the time-table of the college flexible and has scope for adjustment according to requirements? | 61 | 28 | 9 | 5 | 0 | 103 |
| Is the institution motivates participation in National and International Seminars / Conferences /workshops? | 63 | 26 | 10 | 4 | 0 | 103 |
| Does the institute take suggestions for improving teaching-learning in the meetings of the departments? | 65 | 24 | 8 | 6 | 0 | 103 |

| | | | | | | |
|--|----|----|----|---|---|------------|
| Is the infrastructure for IT applications in institution adequate and works effectively? | 64 | 27 | 9 | 3 | 0 | 103 |
| Does the college give opportunity to participate and contribute in various committees and forums? | 61 | 24 | 11 | 7 | 0 | 103 |
| Are the facilities (dispensary, Wi-Fi and canteen) in the college adequate and excellent? | 67 | 21 | 9 | 6 | 0 | 103 |
| Does the college provide opportunities for higher education and research? | 66 | 20 | 8 | 9 | 0 | 103 |
| Are there enough and relevant books for teachers and students in the college library? | 68 | 21 | 8 | 6 | 0 | 103 |
| Is the working environment in the college stress free and conducive? | 69 | 20 | 9 | 5 | 0 | 103 |
| Does the institution conduct various programs for the all-round development of the teachers? | 65 | 21 | 9 | 8 | 0 | 103 |

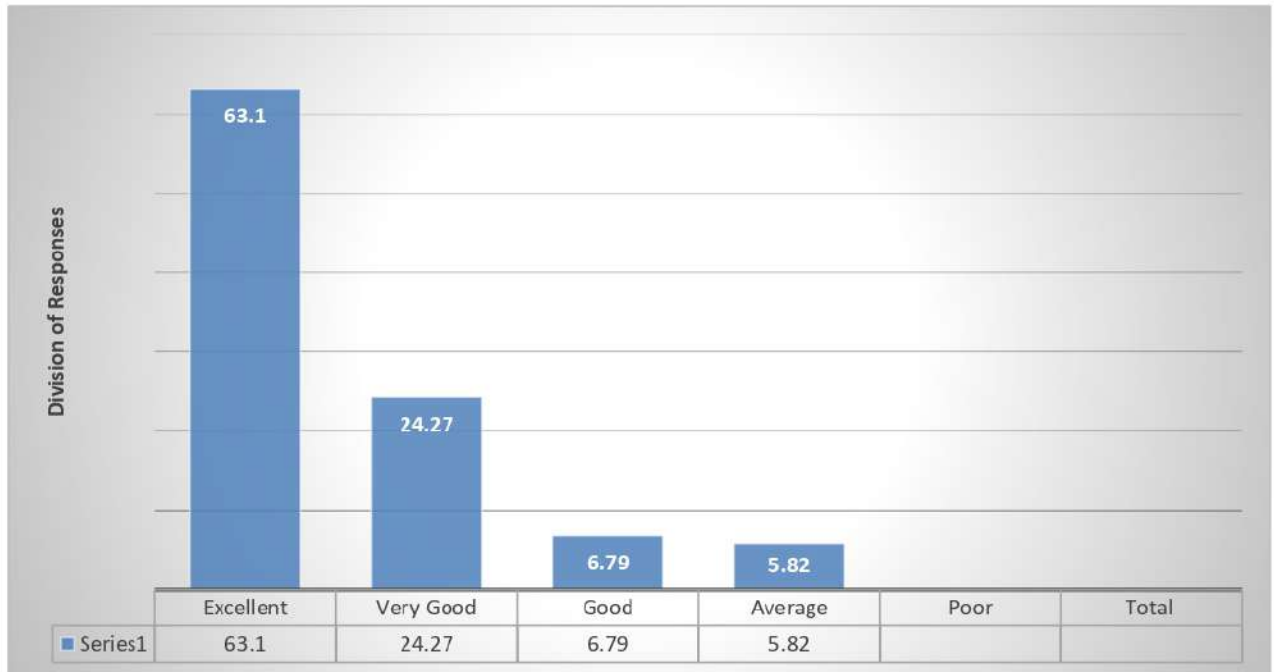
- ✓ **Does the syllabus provide freedom to adopt new technique / strategies of testing and assessment of students?**



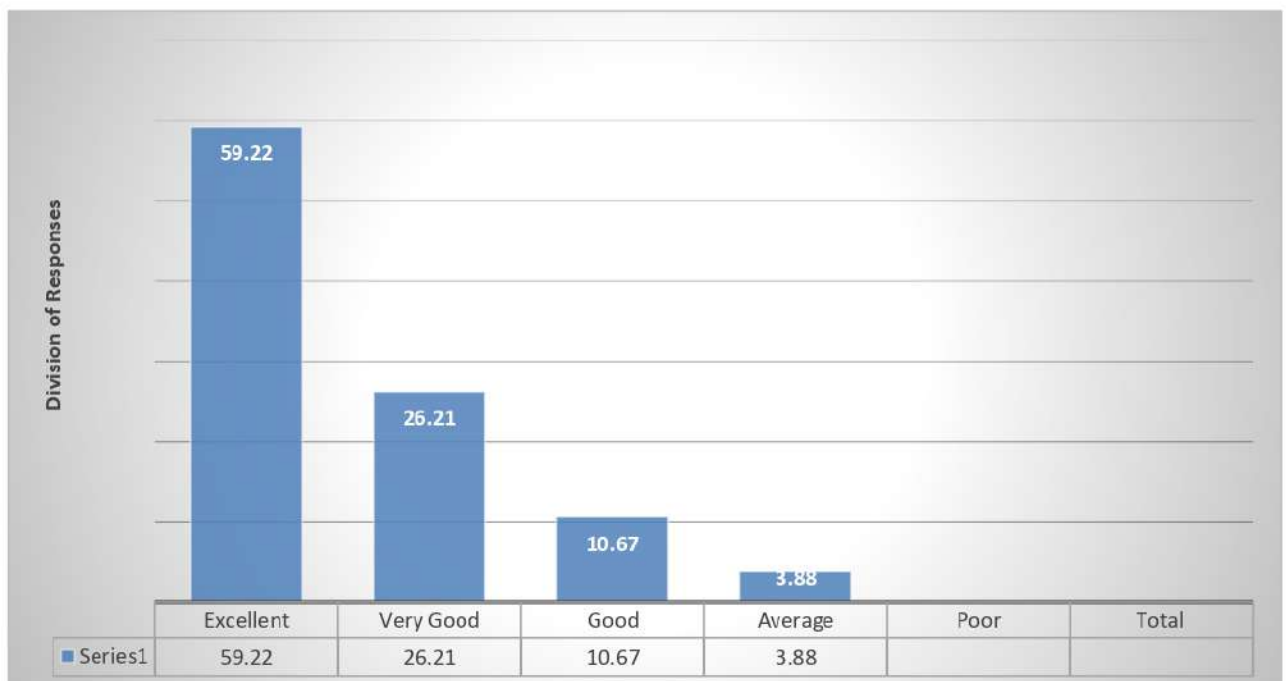
- ✓ **Is the syllabus designed to bridge the gap between theory / practical / academics and industry?**



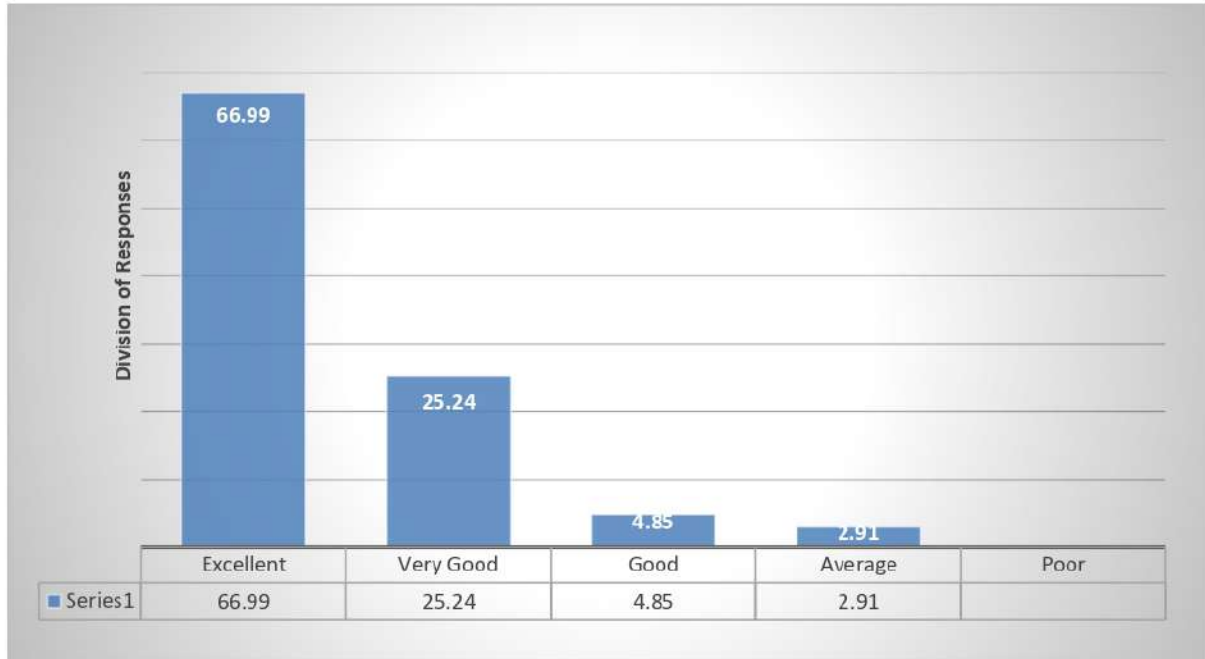
✓ **Is the syllabus designed to improve employability index?**



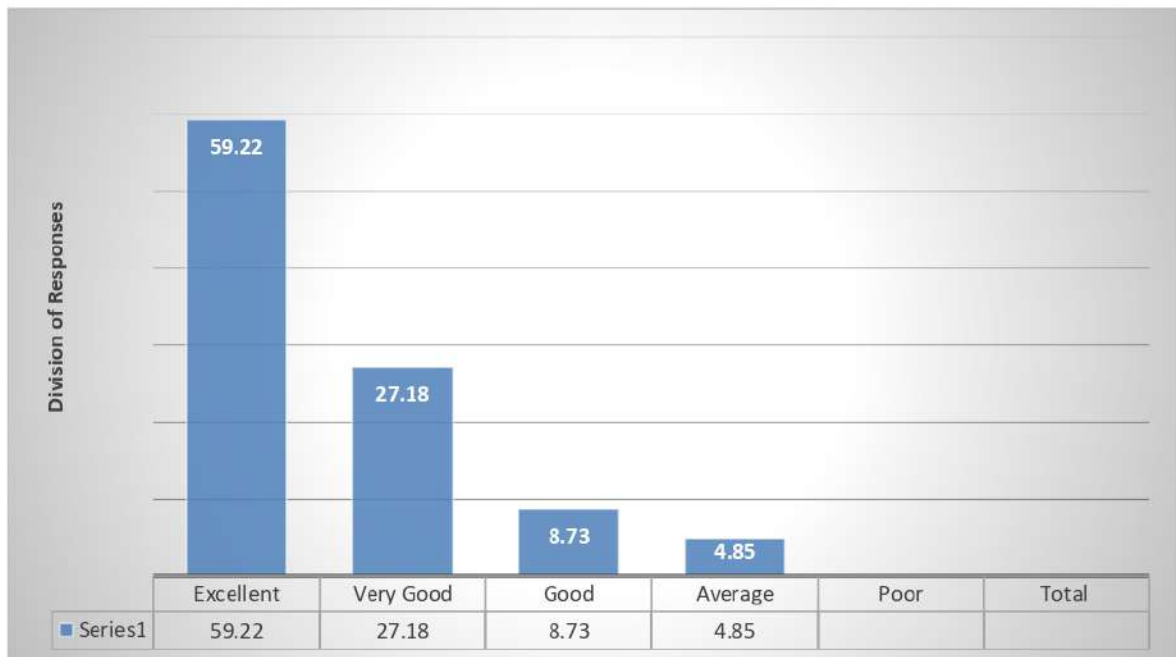
✓ **How do you rate the Labs facilities?**



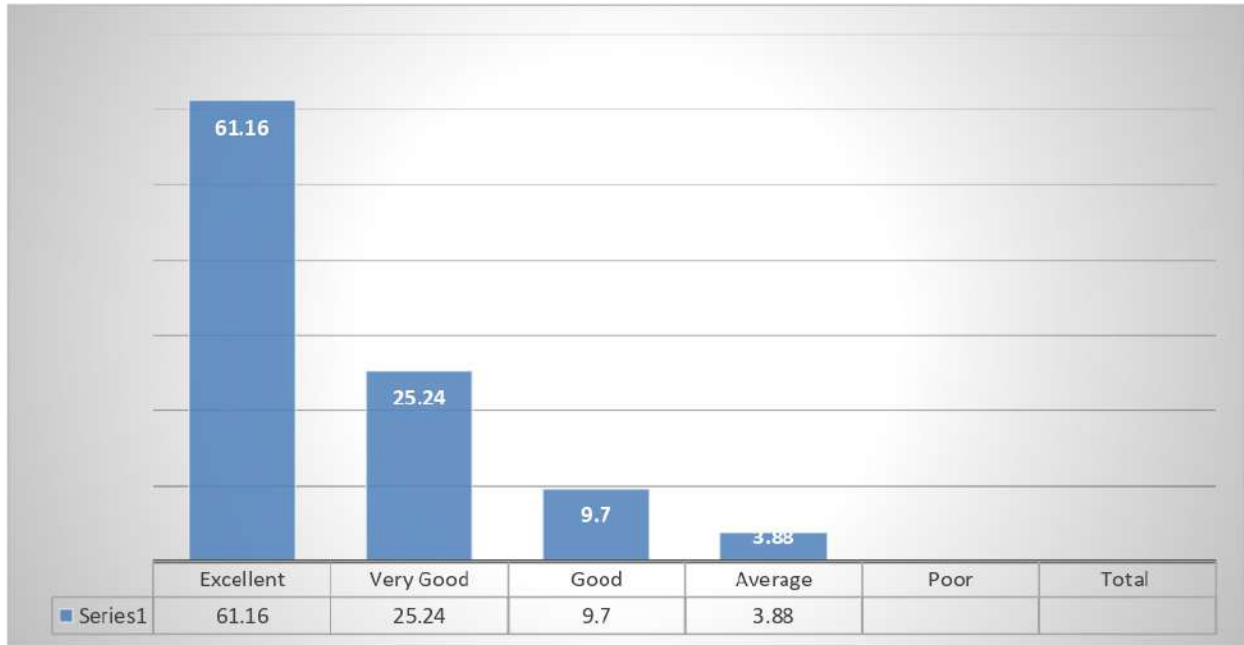
✓ **Is the academic environment in the college highly favorable?**



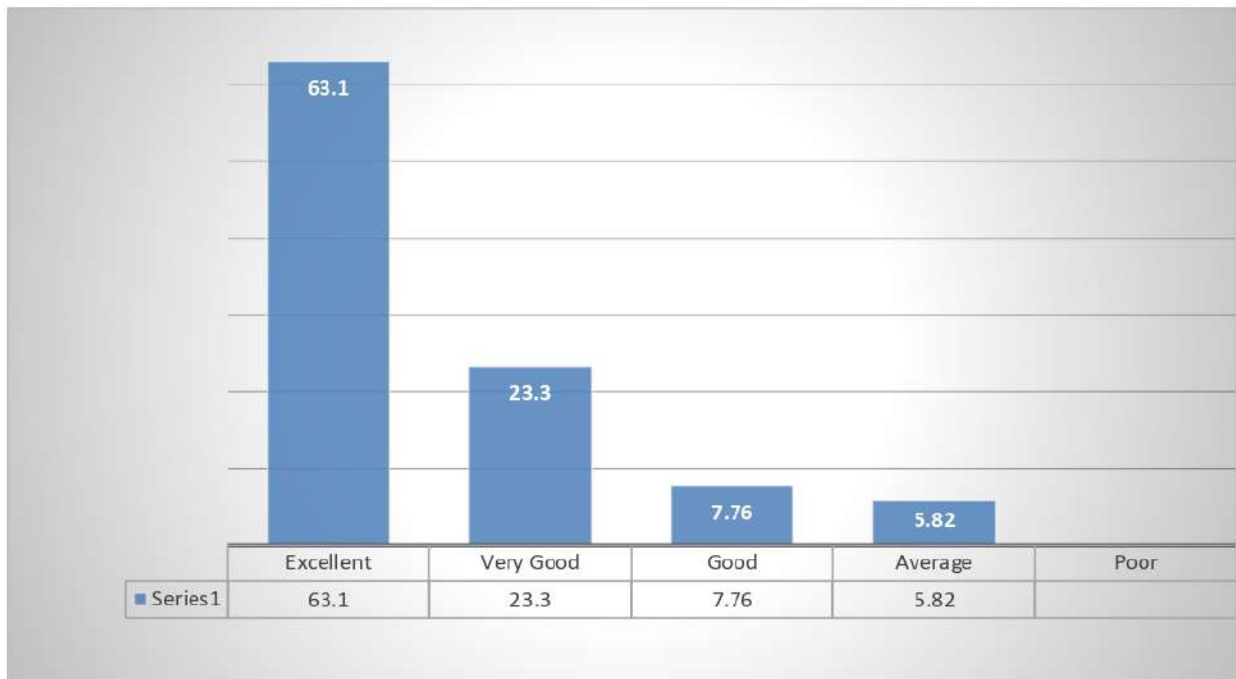
✓ **Is the time-table of the college flexible and has scope for adjustment according to requirements?**



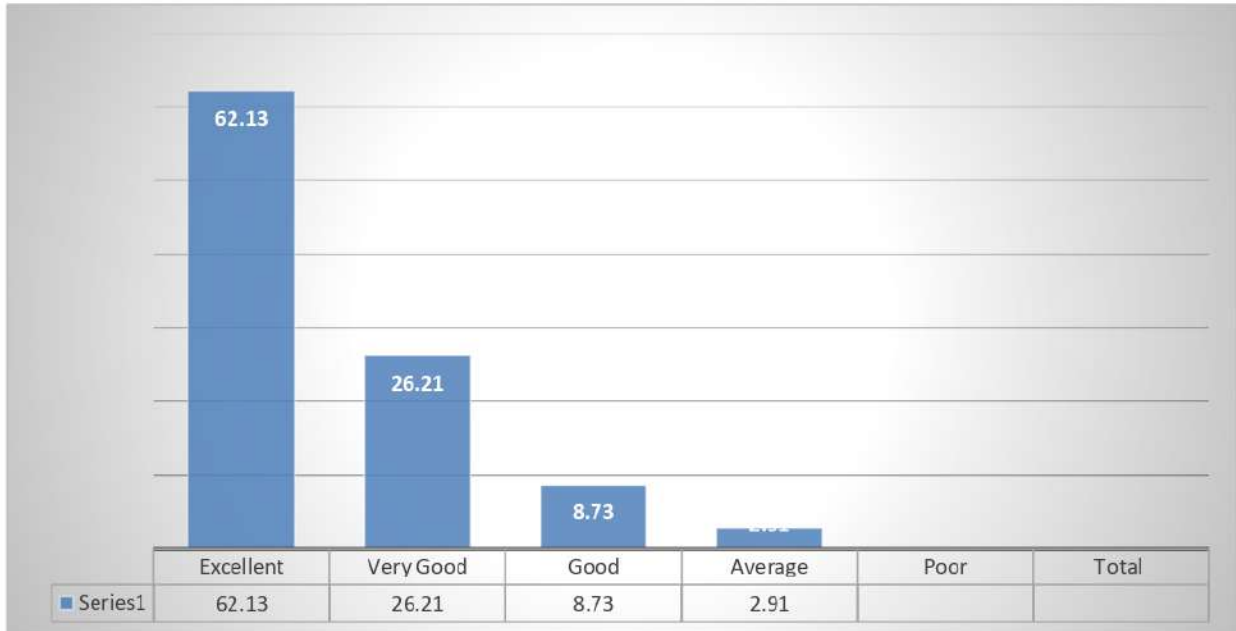
- ✓ **Is the institution motivating participation in National and International Seminars / Conferences /workshops?**



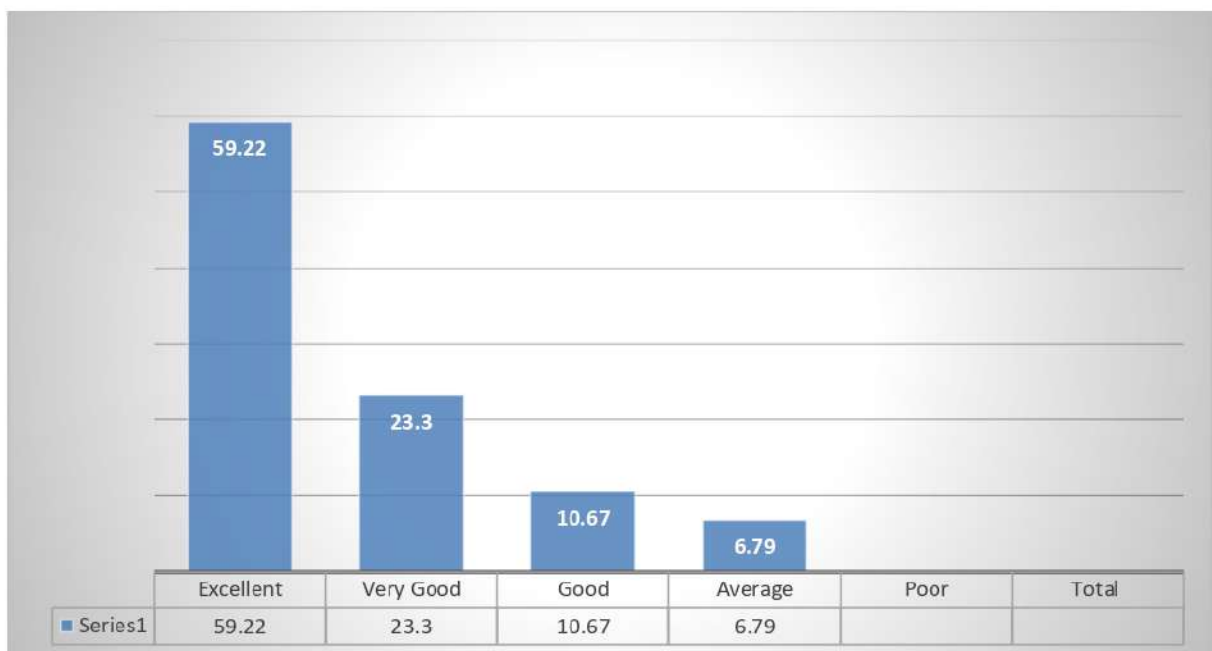
- ✓ **Does the institute take suggestions for improving teaching-learning in the meetings of the departments?**



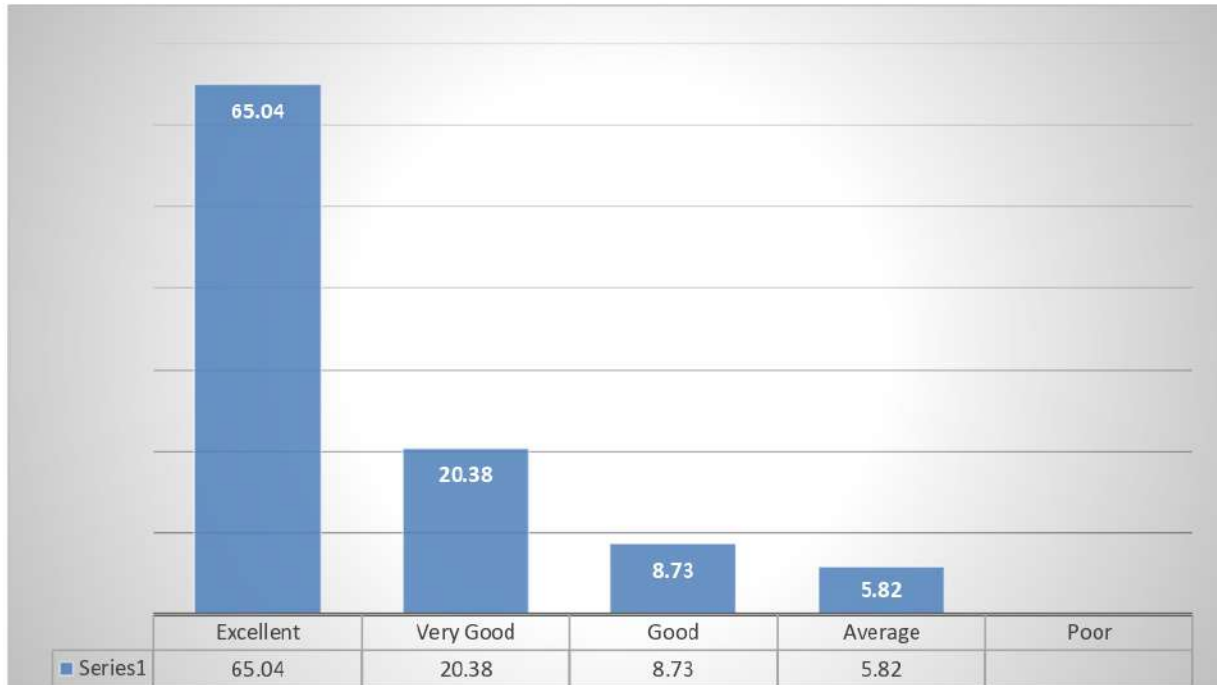
- ✓ **Is the infrastructure or IT applications in institution adequate and works effectively?**



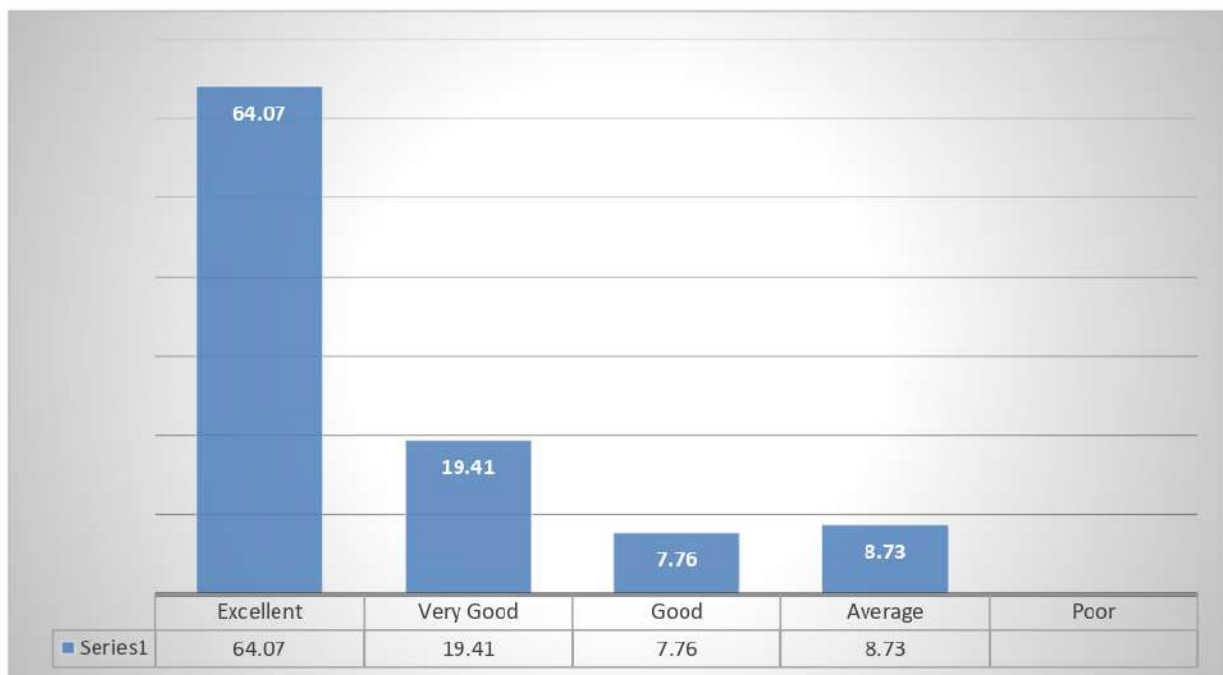
- ✓ **Does the college give opportunity to participate and contribute in various committees and forums?**



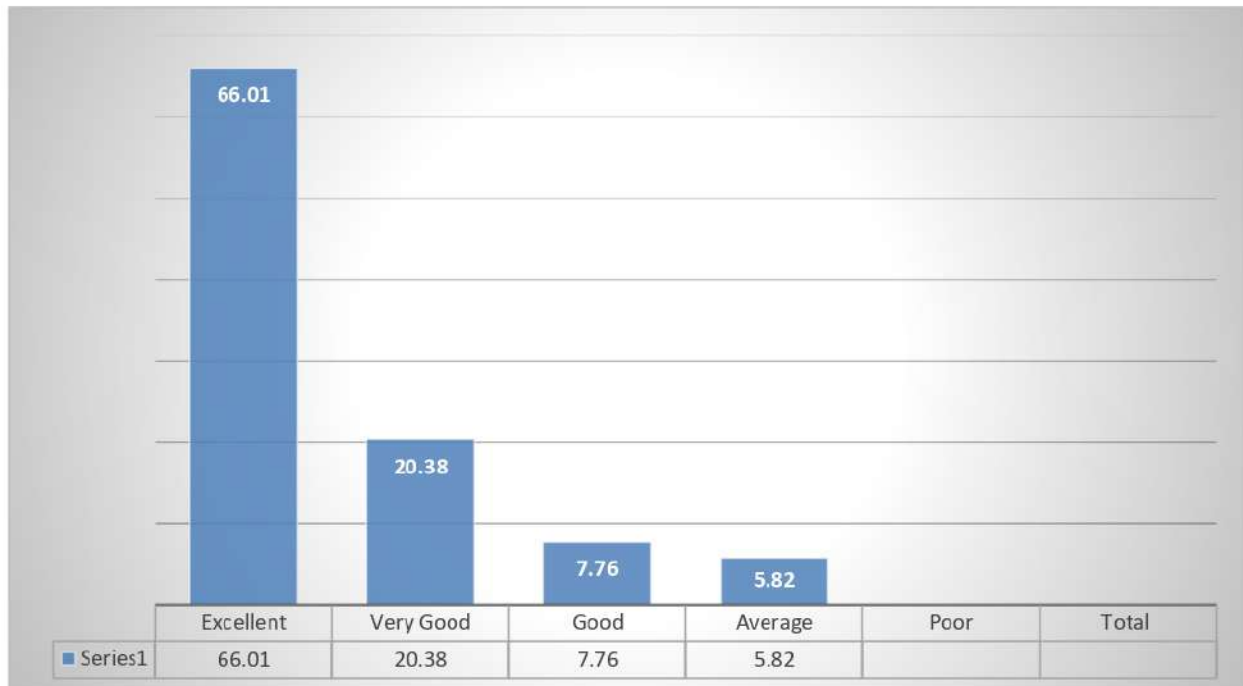
- ✓ **Are the facilities (dispensary, Wi-Fi and canteen) in the college adequate and excellent?**



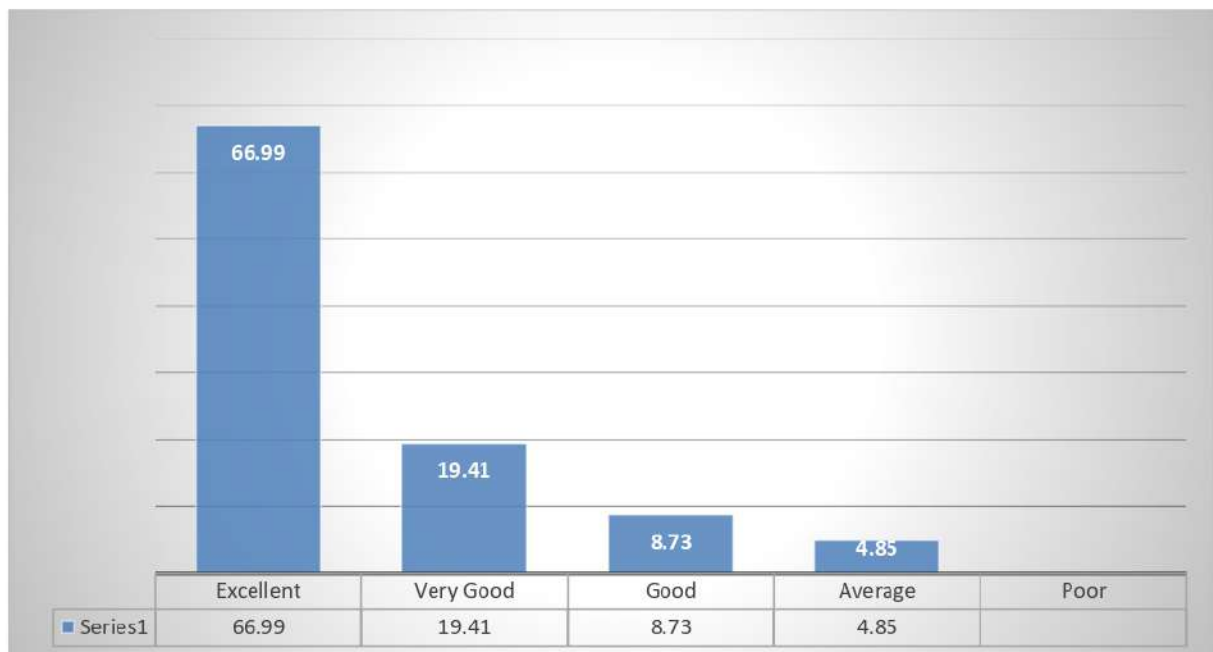
- ✓ **Does the college provide opportunities for higher education and research?**



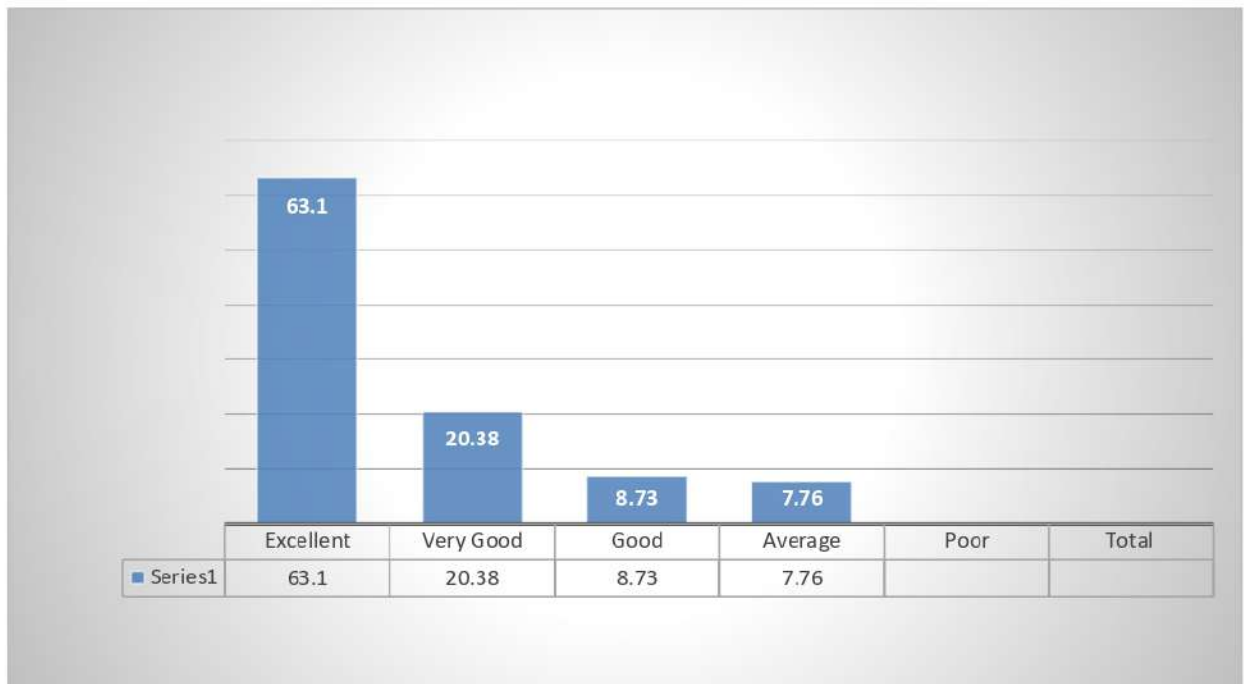
- ✓ **Are there enough and relevant books for teachers and students in the college library?**



- ✓ **Is the working environment in the college stress free and conducive?**



- ✓ **Does the institution conduct various programs for the all-round development of the teachers?**




Principal
SWAMI SWATANTRANAND MEMORIAL COLLEGE
Dinanagar (Gurdaspur)