



Swami Swatantranand Memorial College, Dinanagar

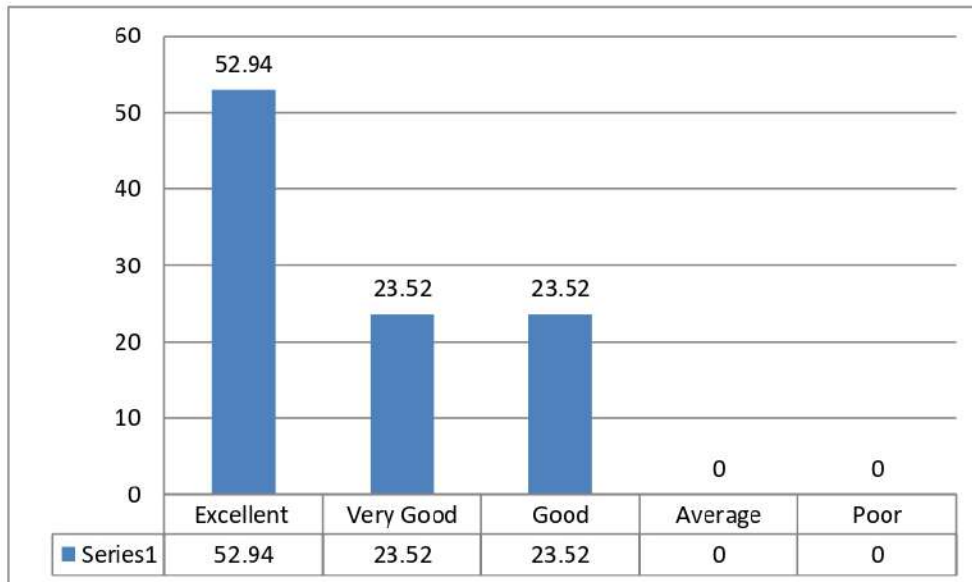
(Affiliated to G.N.D.U Amritsar | Accredited with 'A' Grade by NAAC)

Employers Feedback Analysis Session (2021-22)

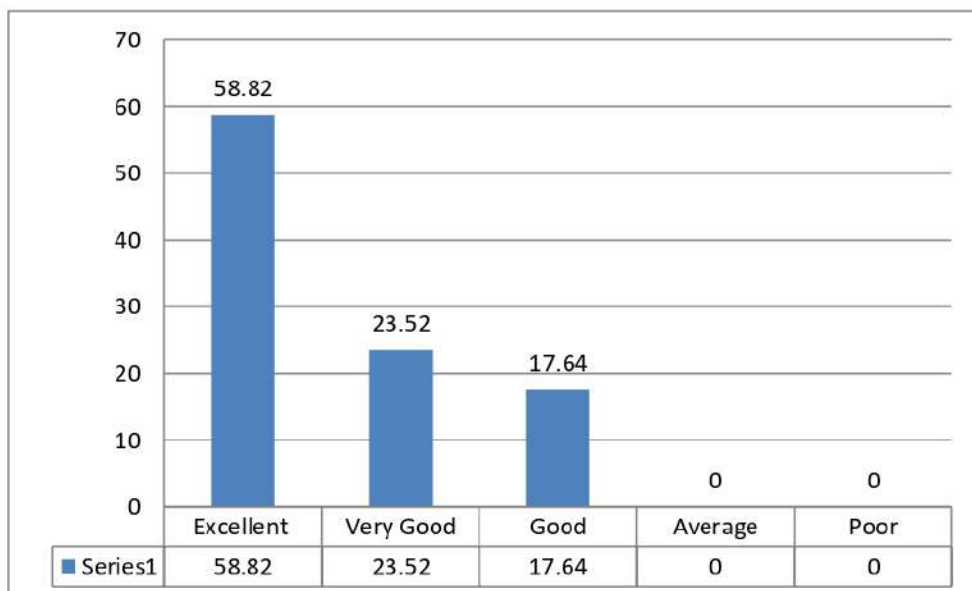
Employers Feedback Analysis

Particulars	Excellent	Very Good	Good	Average	Poor	Total
The curriculum accomplished by the employees is relevant to industrial needs.	9	4	4	0	0	17
The skills required for the employment is addressed in Curriculum.	10	4	3	0	0	17
Extra-curricular courses offered by the institution has enhanced productivity.	11	3	3	0	0	17
Performance after essential soft skills provided by institution.	11	4	2	0	0	17
Institutional values and ethics visible from institution.	12	3	2	0	0	17
Flexibility incarnated by the institution in team working and team efforts.	11	5	1	0	0	17
Factor of employability in curriculum.	10	4	3	0	0	17
Necessary Communication Skills provided by the institution.	8	7	2	0	0	17
Factor of internal motivation visible through the reflection of confidence.	12	4	1	0	0	17

- ✓ **The curriculum accomplished by the employees is relevant to industrial needs.**



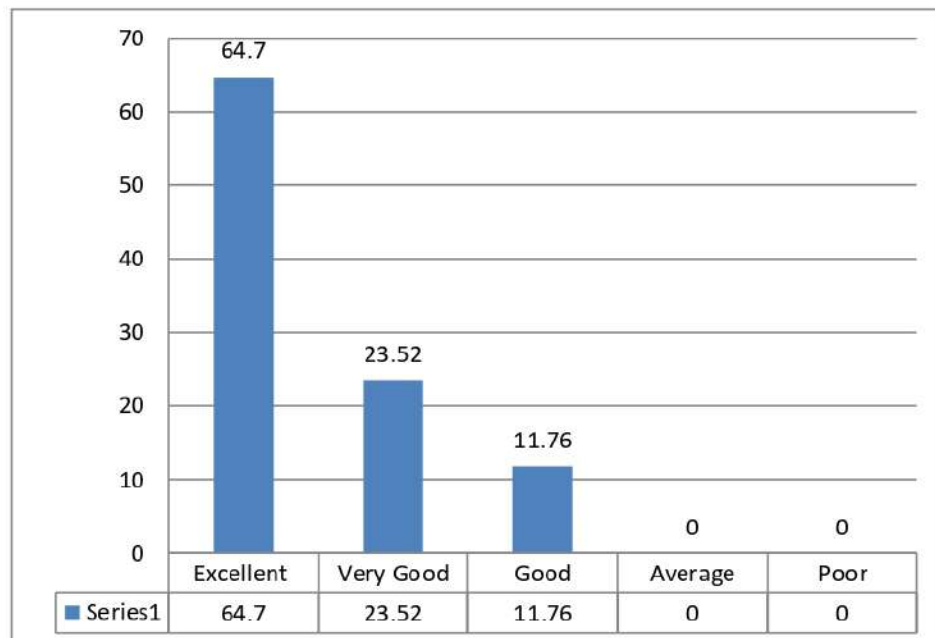
- ✓ **The skills required for the employment is addressed in Curriculum**



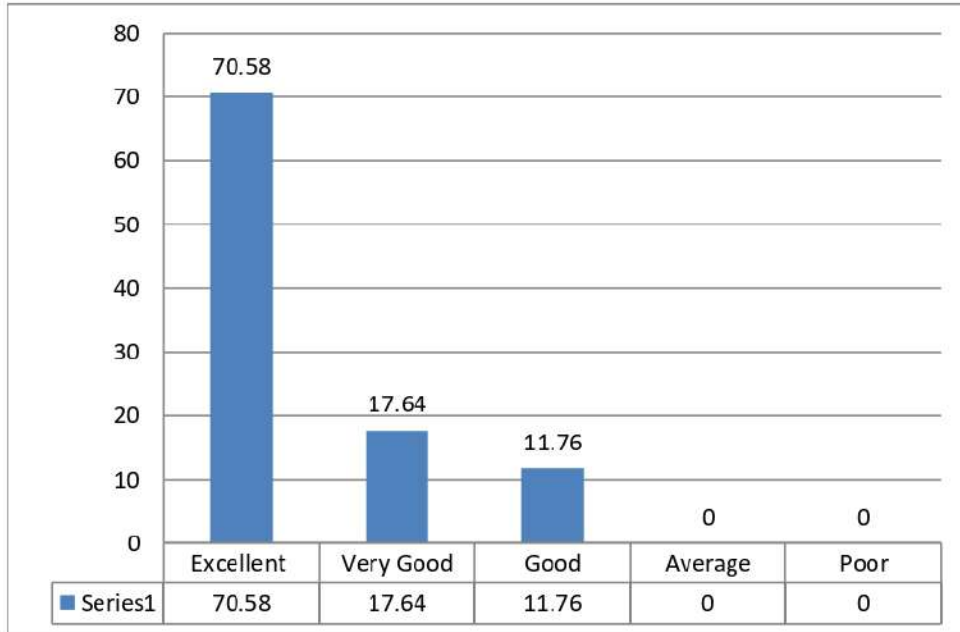
✓ **Extra-curricular courses offered by the institution has enhanced productivity.**



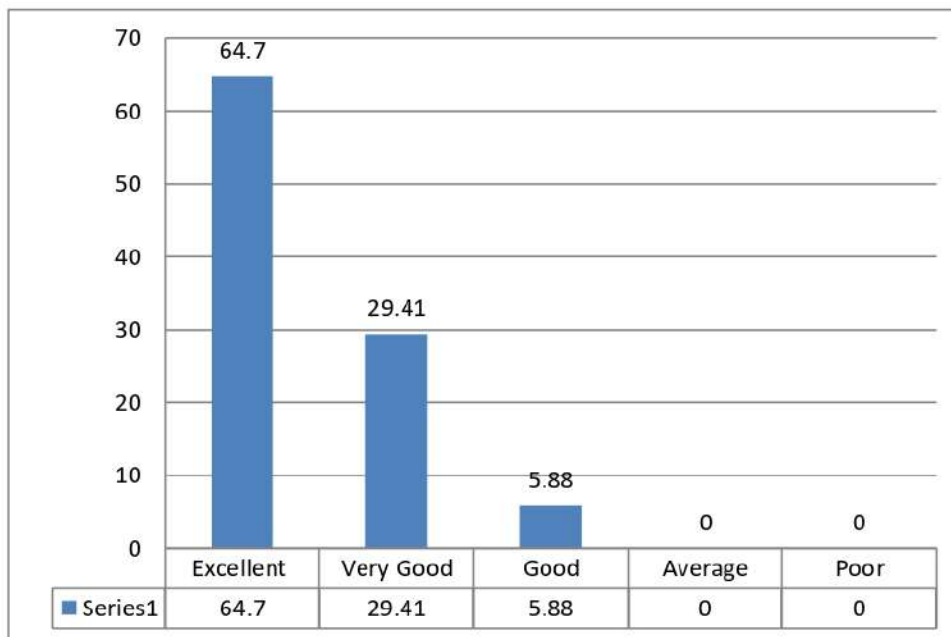
✓ **Performance after essential soft skills provided by institution.**



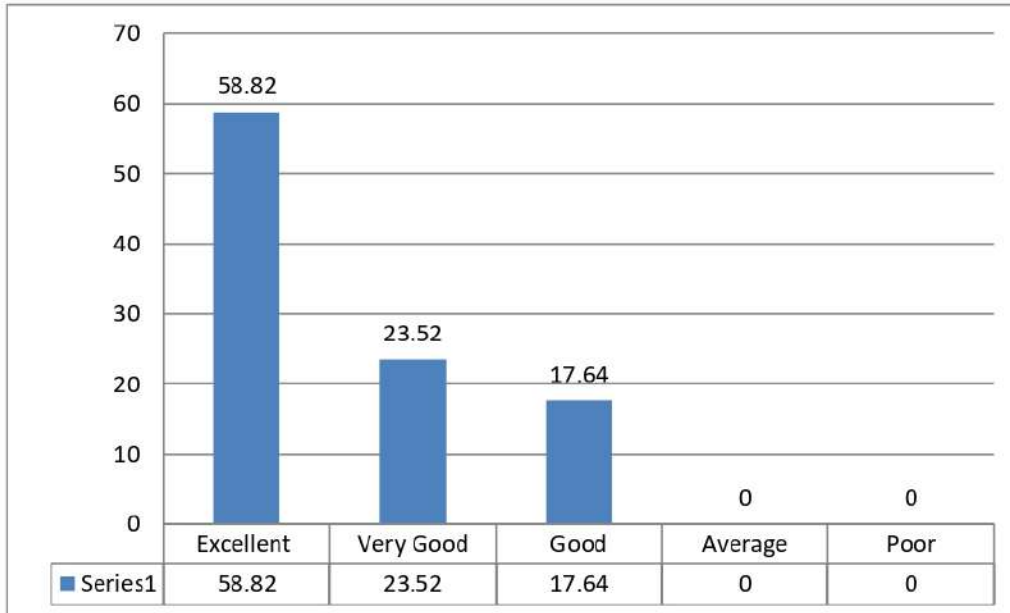
✓ **Institutional values and ethics visible from institution.**



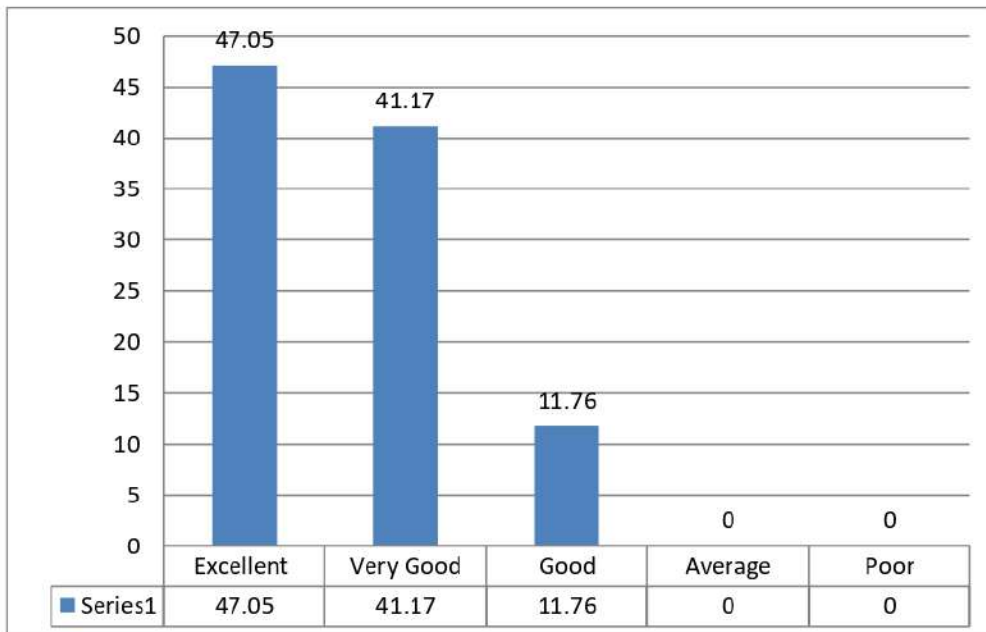
✓ **Flexibility incarnated by the institution in team working and team efforts.**



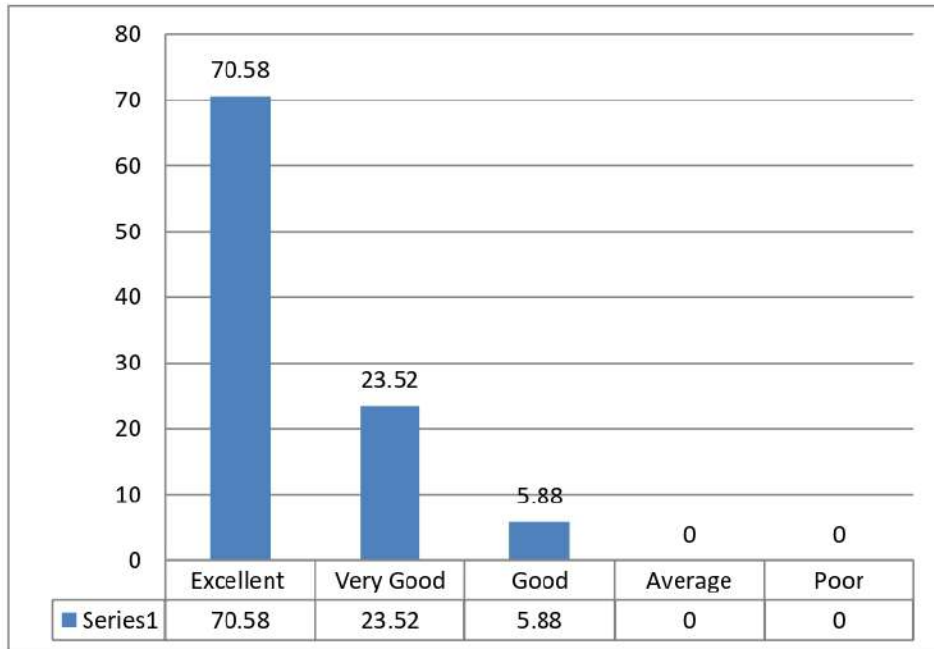
✓ **Factor of employability in curriculum:**



✓ **Necessary Communication Skills provided by the institution.**



✓ **Factor of internal motivation visible through the reflection of confidence:**




Principal
SWAMI SWATANTRAHAND MEMORIAL COLLEGE
Dinanagar (Gurdaspur)