



Swami Swatantranand Memorial College, Dinanagar

(Affiliated to G.N.D.U Amritsar | Accredited with 'A' Grade by NAAC)

Alumni Feedback Analysis

Session (2020-21)

Particulars	Excellent	Very Good	Good	Average	Poor	Total
Do you feel proud to be associated with SSMC as an Alumni?	567	252	111	33	0	963
Overall development of students by various kinds of activities organized by the college.	555	232	147	29	0	963
Are you willing to contribute in the development of the institute?	519	280	139	25	0	963
How do you rate the handling of student's grievance?	551	219	154	39	0	963
Laboratories and equipment for Practical Experiences.	575	212	136	40	0	963
Education imparted at SSMC in present scenario.	551	231	149	32	0	963
Placement Opportunities On campus and Off campus provided by the college.	557	226	141	39	0	963
Do you like to join the Institute Alumni Association?	507	269	155	32	0	963
Do you receive regular updates from the Institute?	541	243	142	37	0	963

How do you rate laboratories/Library/Seminar Hall/Reading Room facilities?	562	196	167	38	0	963
How do you rate computer facilities?	567	192	169	35	0	963
How do you rate Internet & Wi-Fi facilities?	515	254	163	31	0	963
How do you rate sport and cultural facilities?	549	225	153	36	0	963
How do you rate classroom facilities?	517	249	163	34	0	963
How do you rate Canteen Facilities/ Hostel facilities?	527	263	138	35	0	963
How do you rate overall Infrastructure of the college?	547	251	128	37	0	963
Rate the adequate knowledge gained during your course of study.	573	181	167	42	0	963
Have you availed career counseling and guidance for higher studies from T&P cell?	509	249	145	60	0	963
Will you recommend your relative/friends to enroll at SSMC?	500	252	162	49	0	963

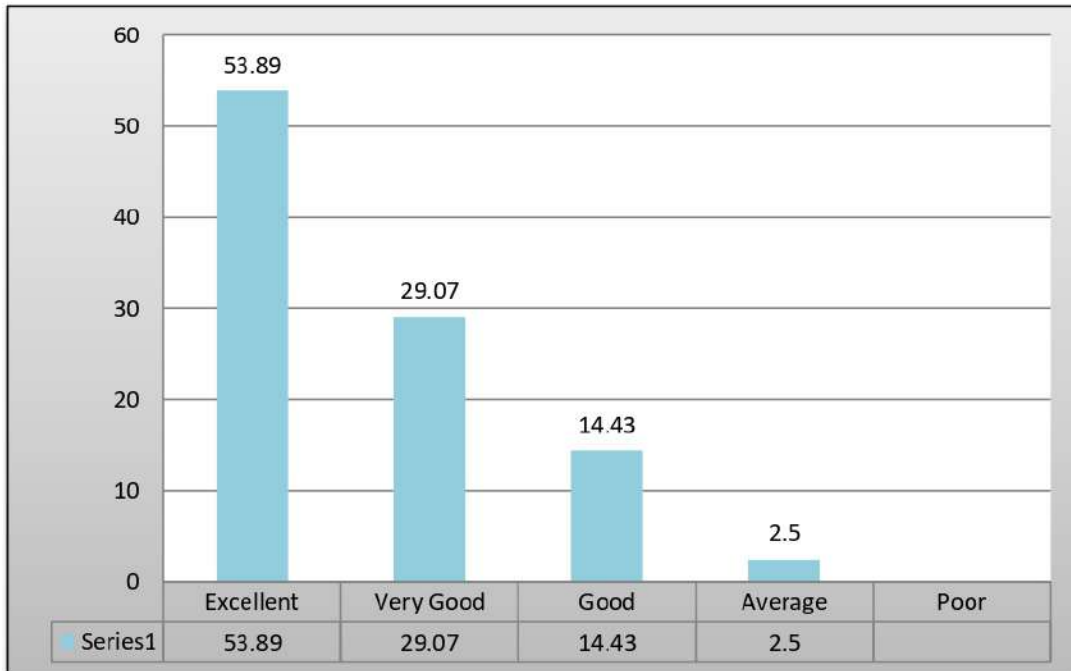
✓ **Do you feel proud to be associated with SSMC as an Alumni?**



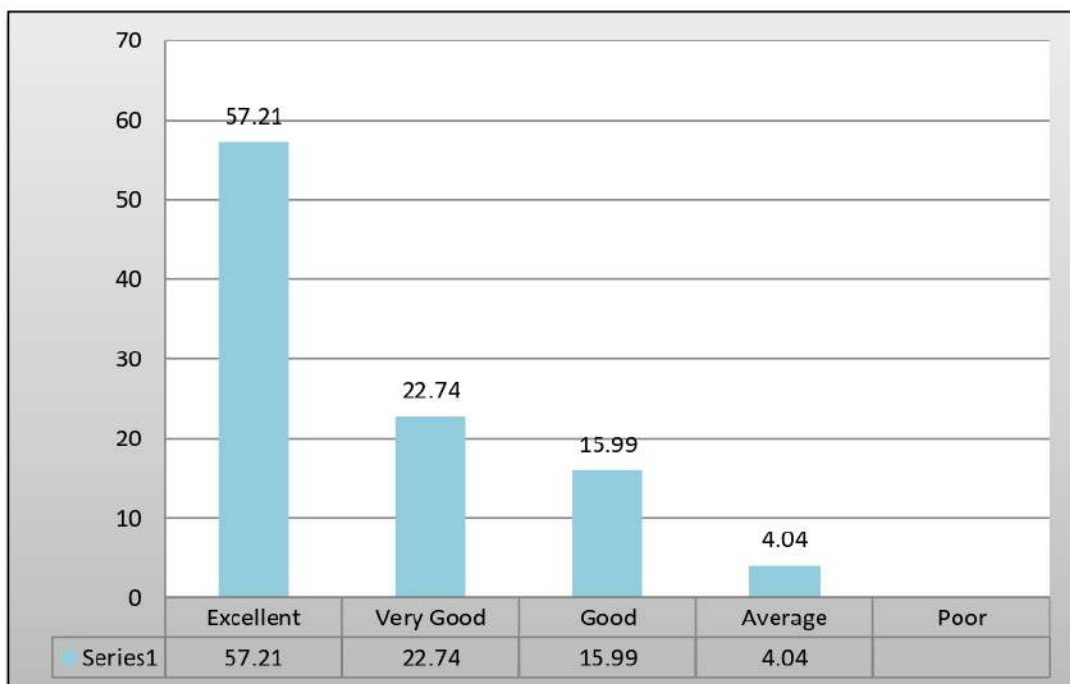
✓ **Overall development of students by various kinds of activities organized by the college**



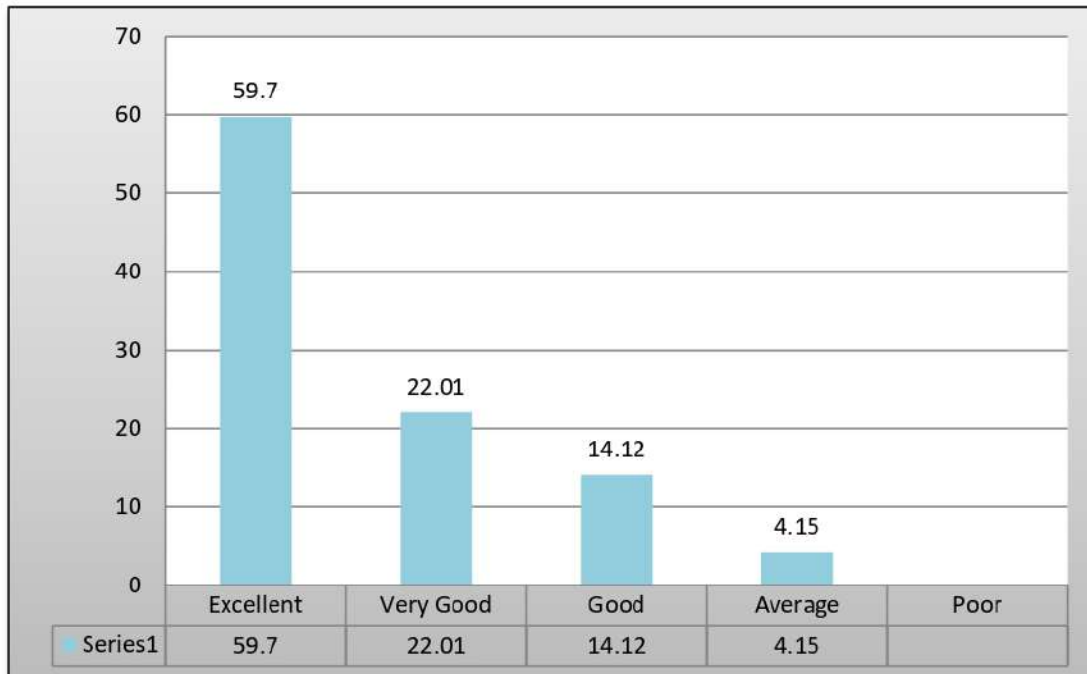
✓ **Are you willing to contribute in the development of the institute?**



✓ **How do you rate the handling of student's grievance?**



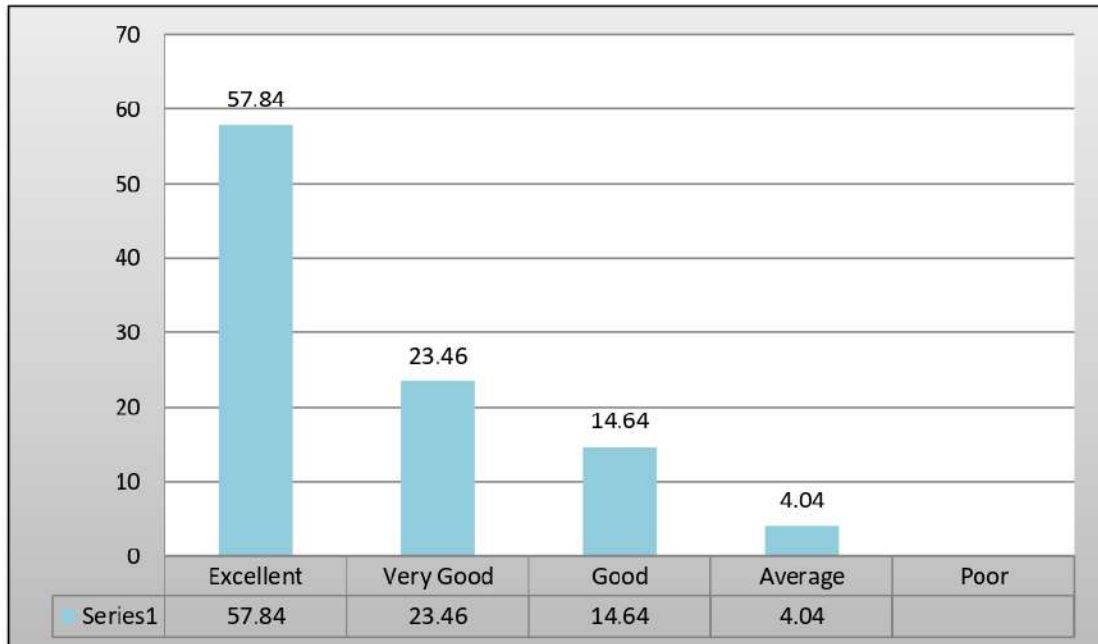
✓ Laboratories and equipment for Practical Experiences



✓ Education imparted at SSMC in present scenario



✓ **Placement opportunities on campus and off campus provided by the college**



✓ **Do you like to join the Institute Alumni Association?**



✓ Do you receive regular updates from the Institute?



✓ How do you rate the Course content?



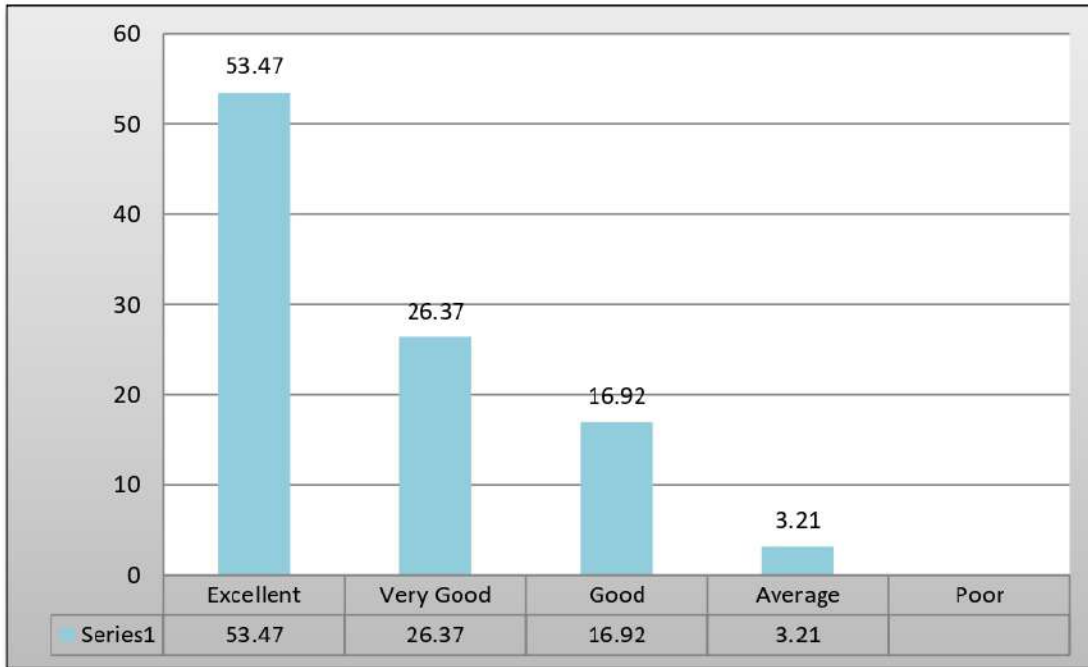
✓ **How do you rate laboratories/library/seminar/reading room facilities?**



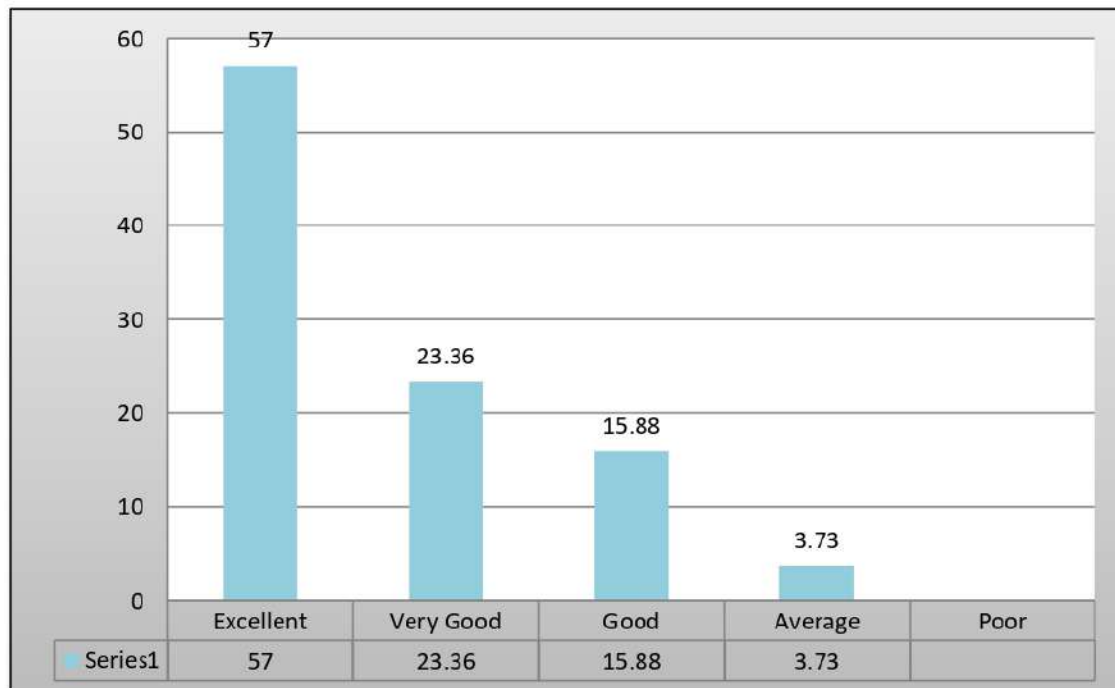
✓ **How do you rate computer facilities?**



✓ **How do you rate Internet & Wi-Fi facilities?**



✓ **How do you rate sport and cultural facilities?**



✓ **How do you rate classroom facilities?**



✓ **How do you rate Canteen Facilities/ Hostel facilities?**



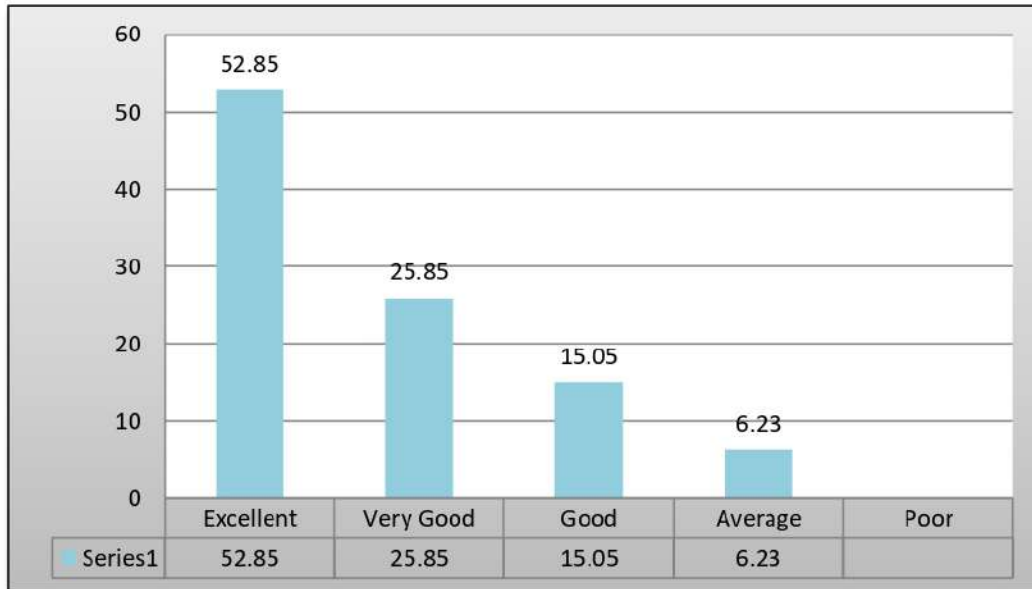
✓ **How do you rate Overall Infrastructure of the college?**



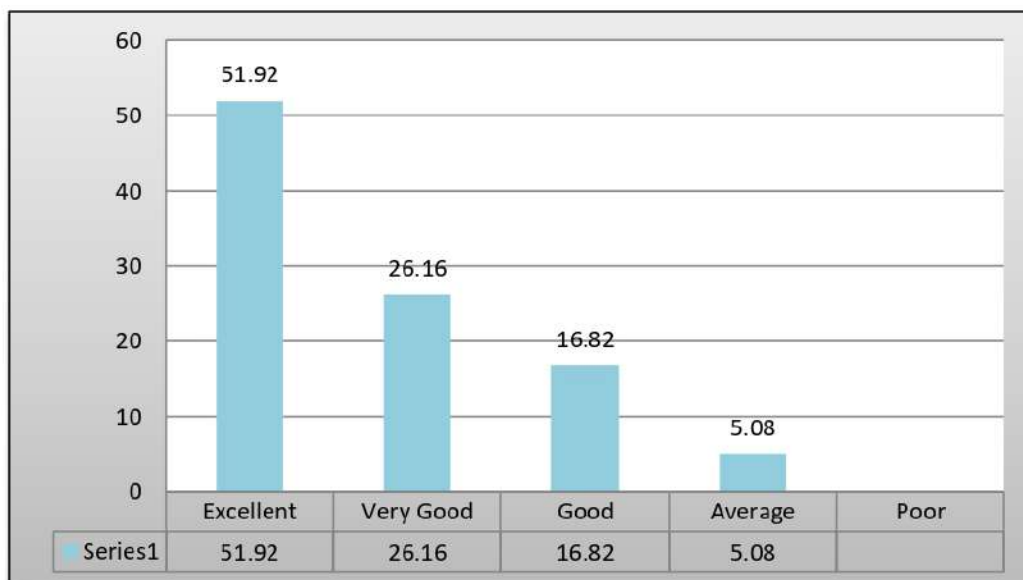
✓ **Rate the adequate knowledge gained during your course of study**



✓ **Have you availed career counseling and guidance for higher studies from T&P cell?**



✓ **Will you recommend your relative/friends to enroll at SSMC?**




Principal
SRINI SWATANTRAMO MEMORIAL COLLEGE
Dinamagar (Guntur)