



Swami Swatantranand Memorial College, Dinanagar
(Affiliated to G.N.D.U Amritsar | Accredited with 'A' Grade by NAAC)

Teachers' Feedback Analysis

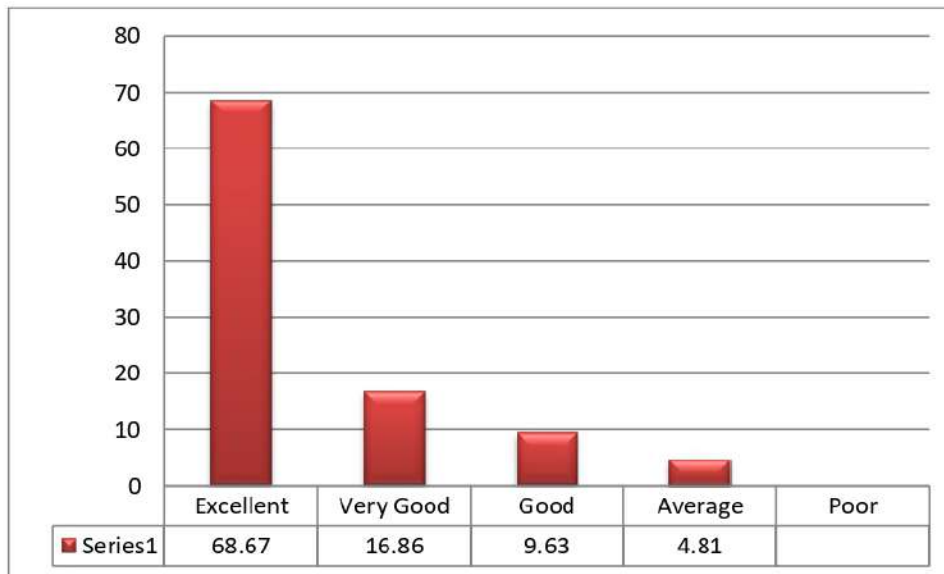
Session (2020-21)

Teachers Feedback Analysis

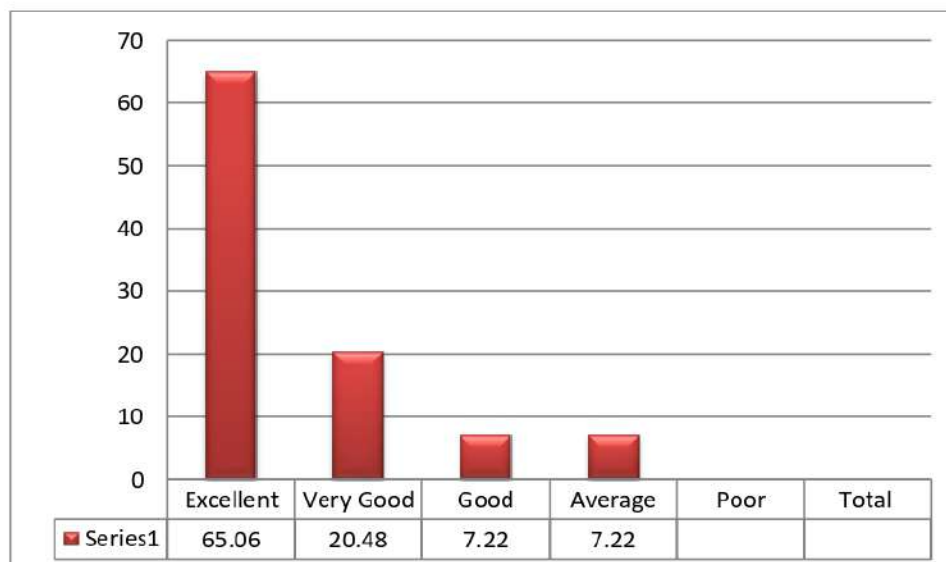
Particulars	Excellent	Very Good	Good	Average	Poor	Total
Does the syllabus provide freedom to adopt new technique / strategies of testing and assessment of students?	57	14	8	4	0	83
Is the syllabus designed to bridge the gap between theory / practical /academics and industry?	54	17	6	6	0	83
Is the syllabus designed to improve employability index?	55	15	7	6	0	83
How do you rate the Labs facilities?	51	17	11	4	0	83
Is the academic environment in the college highly favorable?	59	16	5	3	0	83
Is the time-table of the college flexible and has scope for adjustment according to requirements?	51	18	9	5	0	83
Is the institution motivating participation in National and International Seminars / Conferences /workshops?	53	16	10	4	0	83
Does the institute take suggestions for improving teaching-learning in the meetings of the departments?	55	14	8	6	0	83

Is the infrastructure for IT applications in institution adequate and works effectively?	54	17	9	3	0	83
Does the college give opportunity to participate and contribute in various committees and forums?	51	14	11	7	0	83
Are the facilities (dispensary, Wi-Fi and canteen) in the college adequate and excellent?	57	11	9	6	0	83
Does the college provide opportunities for higher education and research?	56	10	8	9	0	83
Are there enough and relevant books for teachers and students in the college library?	58	11	8	6	0	83
Is the working environment in the college stress free and conducive?	59	10	9	5	0	83
Does the institution conduct various programs for the all-round development of the teachers?	55	11	9	8	0	83

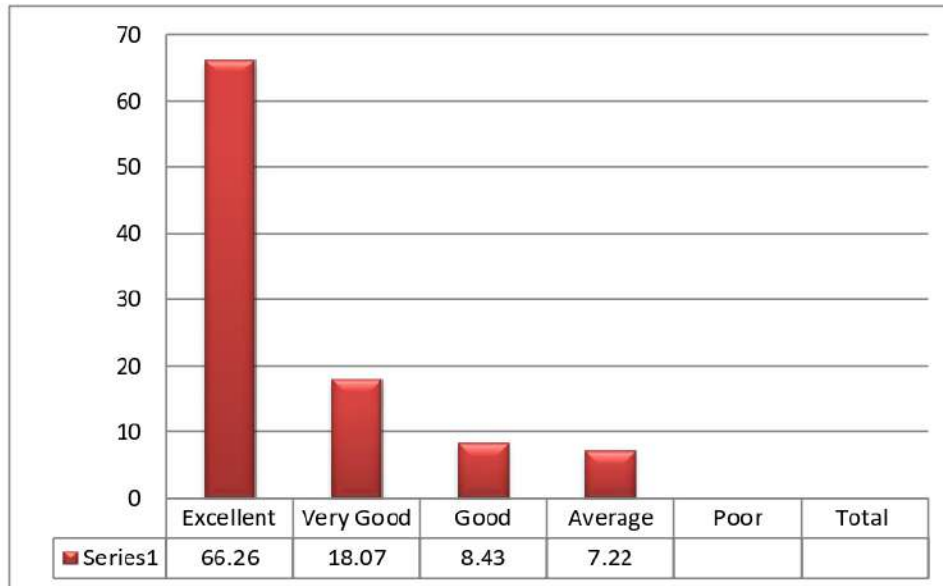
❖ Does the syllabus provide freedom to adopt new technique /strategies of testing and assessment of students?



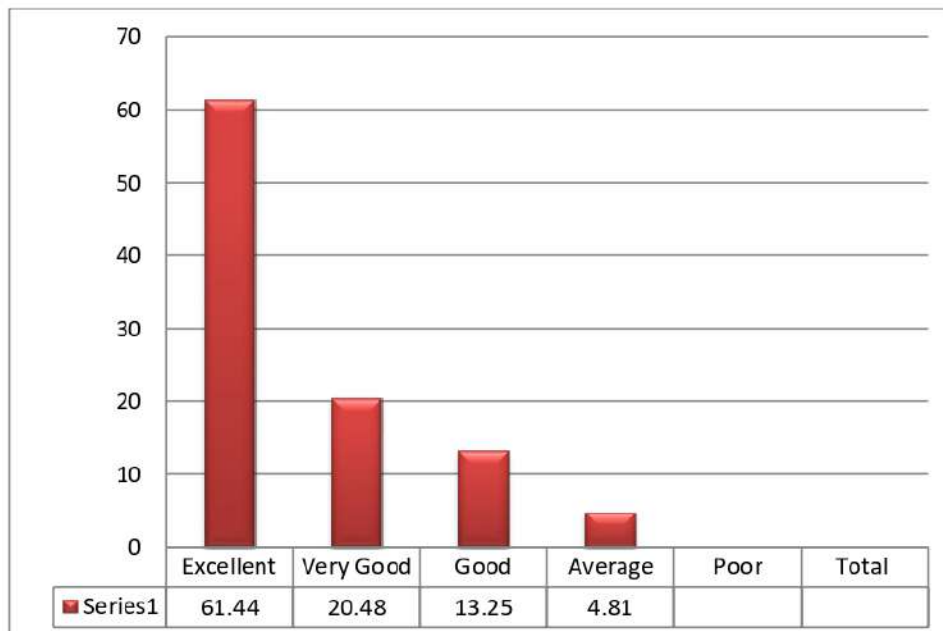
❖ Is the syllabus designed to bridge the gap between theory/ practical/ academics and industry?



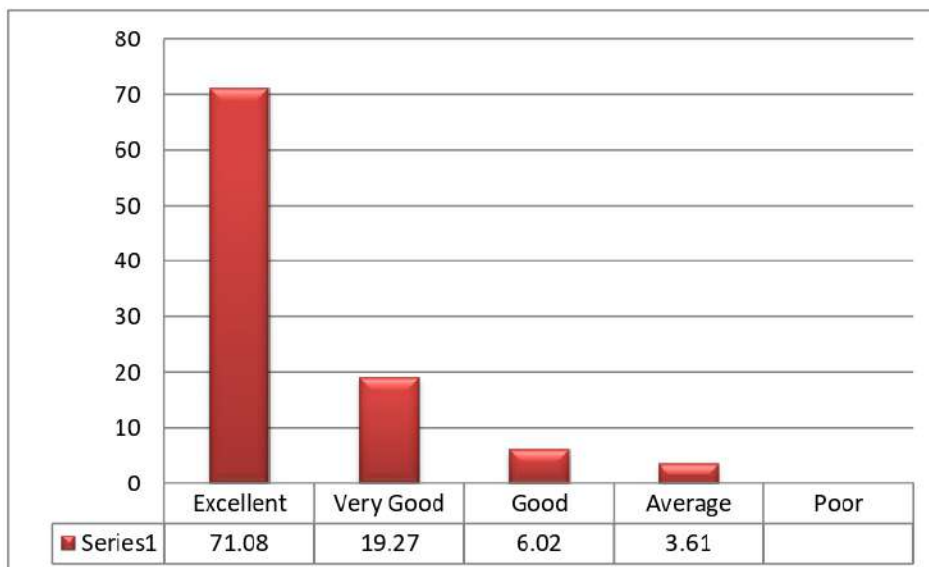
❖ **Is the syllabus designed to improve employ ability index?**



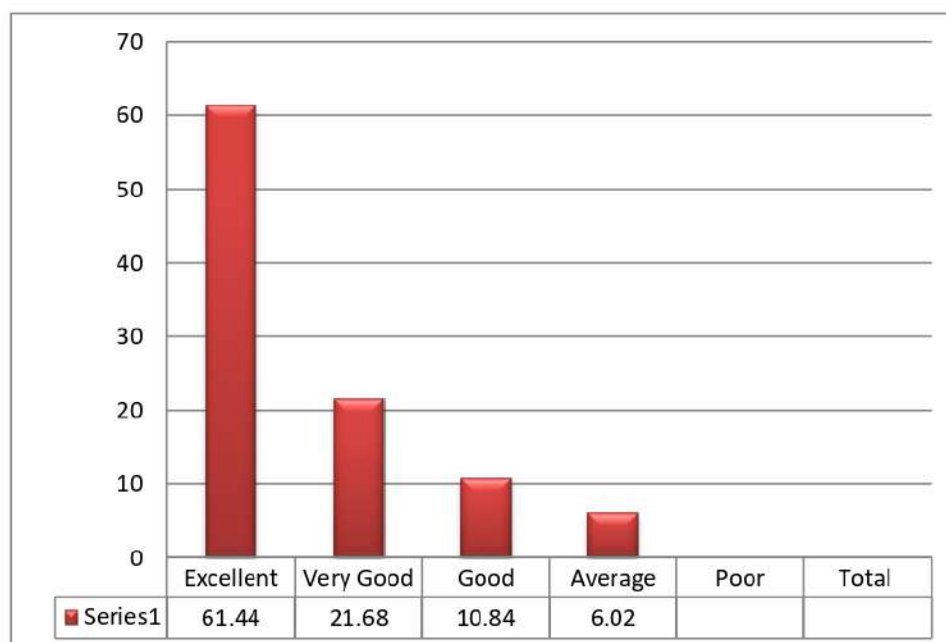
❖ **How do you rate the Labs facilities?**



❖ Is the academic environment in the college highly favorable?



❖ Is the time-table of the college flexible and has scope for adjustment according to requirements?



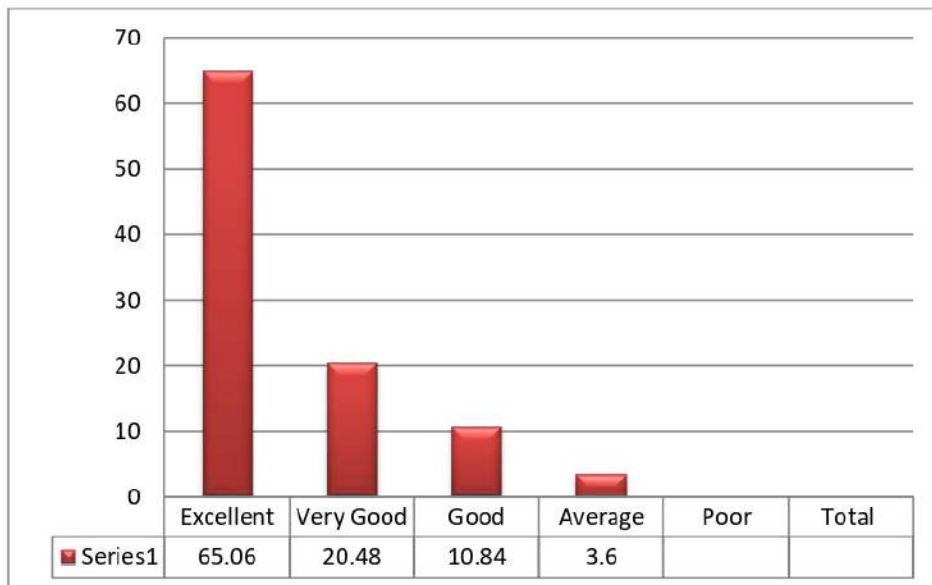
❖ Is the institution motivating participation in National and International Seminars/Conferences/workshops?



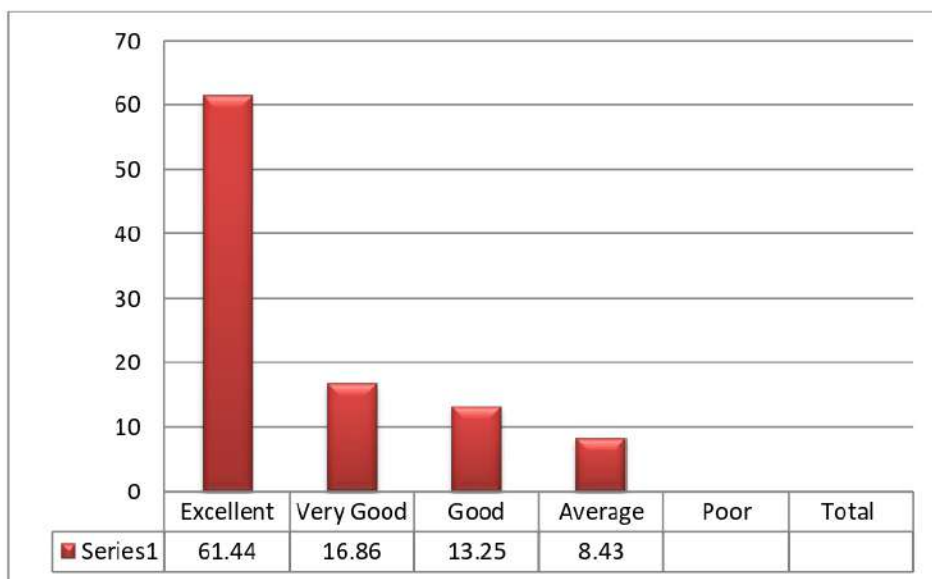
❖ Does the institute take suggestions for improving teaching-learning in the meetings of the departments?



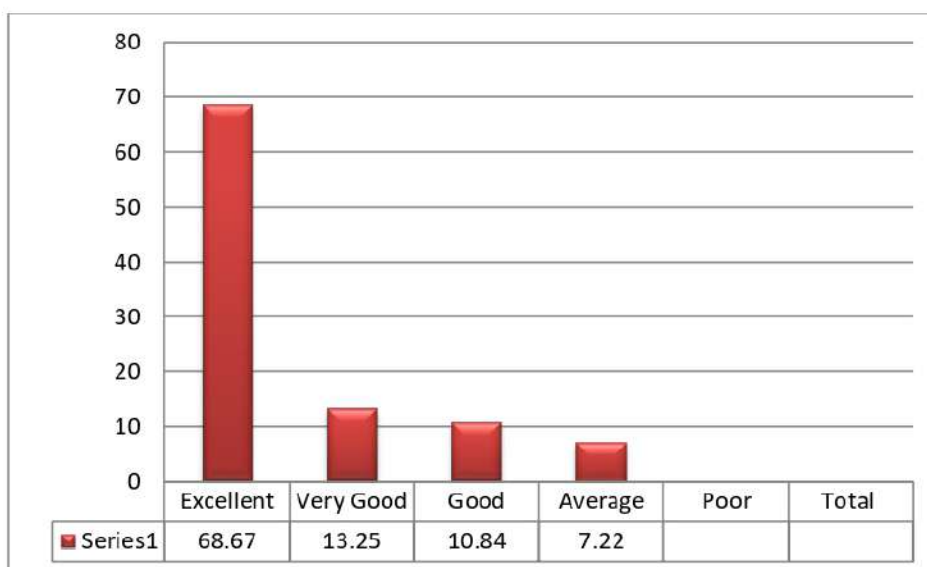
❖ **Is the in Fra structure for IT applications in institution adequate and works effectively?**



❖ **Does the college give opportunity to participate and contribute in various committee sand forums?**



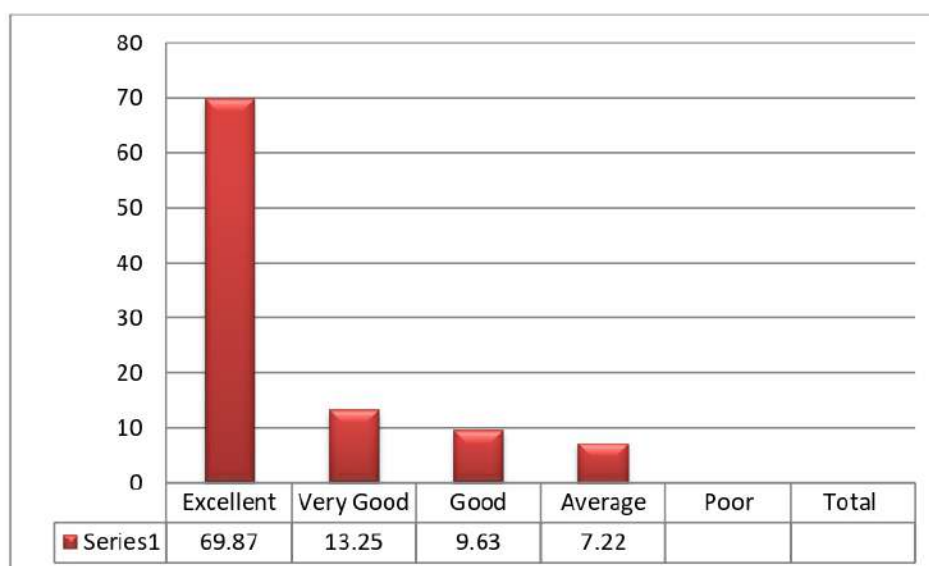
❖ **Are the facilities (dispensary, Wi Fi and canteen) in the college adequate and excellent?**



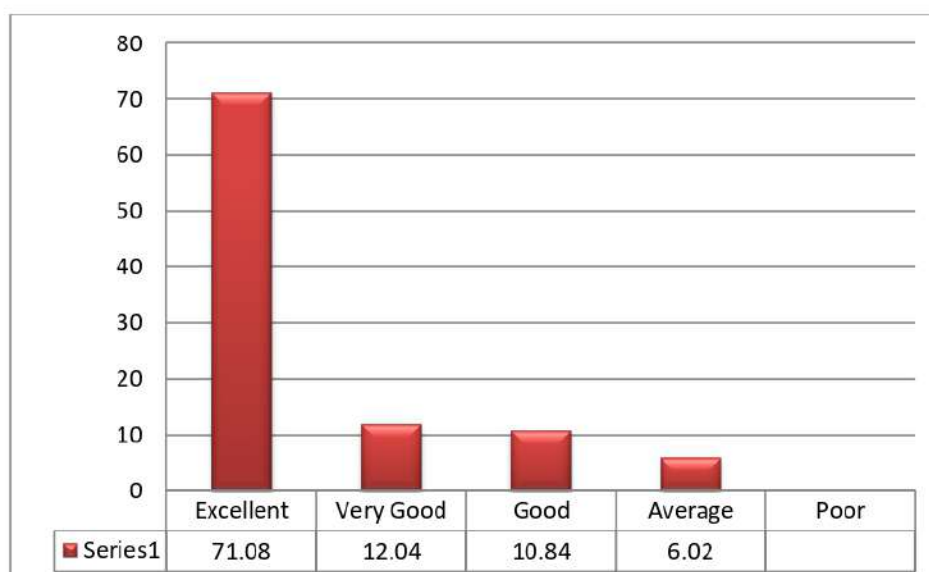
❖ **Does the college provide opportunities for higher education and research?**



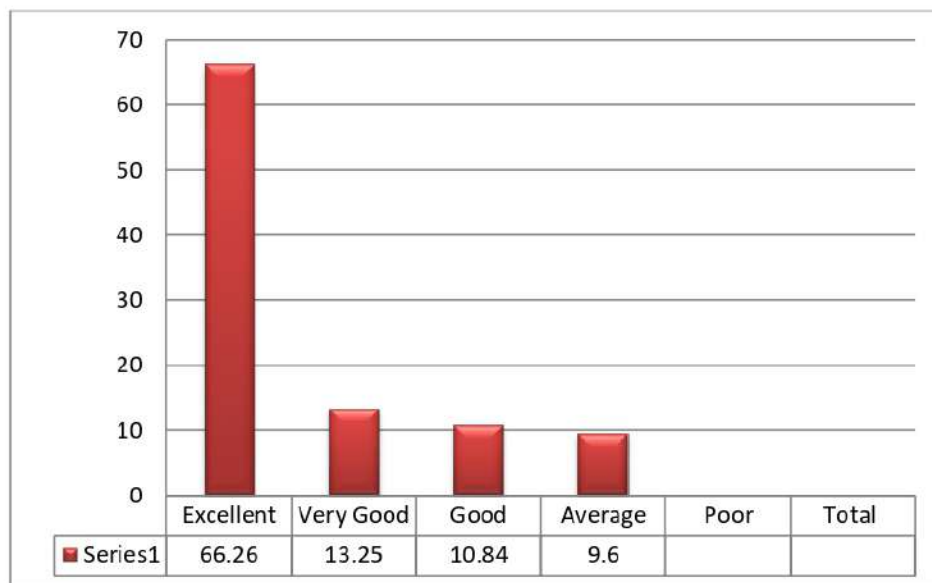
❖ Are the enough and relevant books for teachers and students in the college library?



❖ Is the working environment in the college stress free and conducive?



❖ **Does the institution conduct various programs for the all-round development to f the teachers?**



[Handwritten Signature]
Principal
SWAMI SWATANTRAMANAND MEMORIAL COLLEGE
Dinanagar (Gurdaspur)