



# **Swami Swatantranand Memorial College, Dinanagar**

**(Affiliated to G.N.D.U Amritsar | Accredited with 'A' Grade by NAAC)**

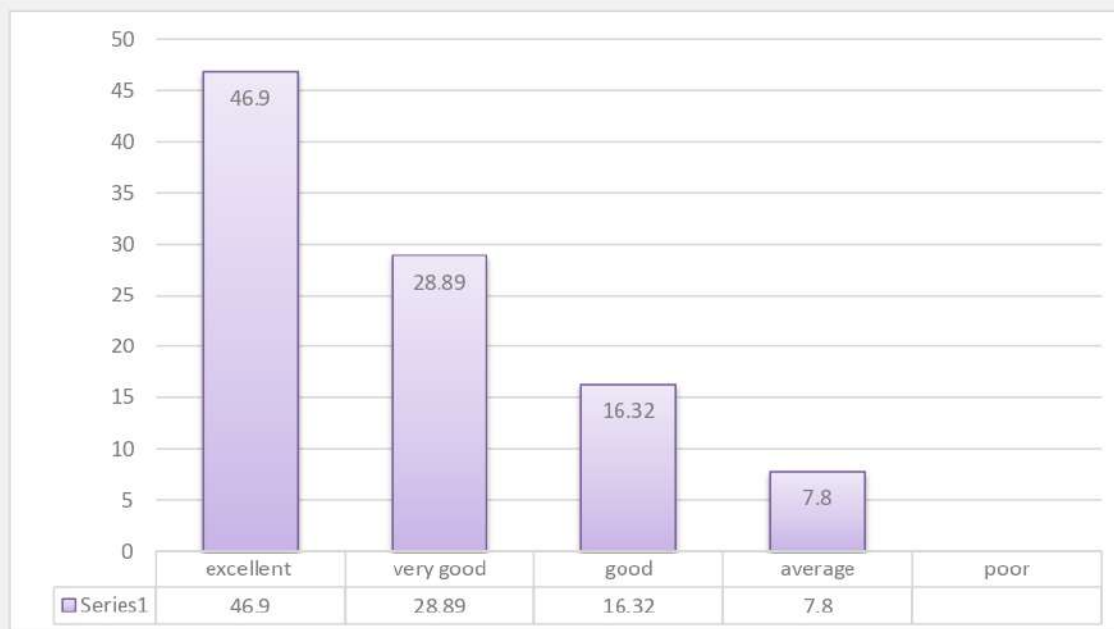
## **Student Feedback Analysis Session (2020-21)**

## Overall Rating of Programme of Study

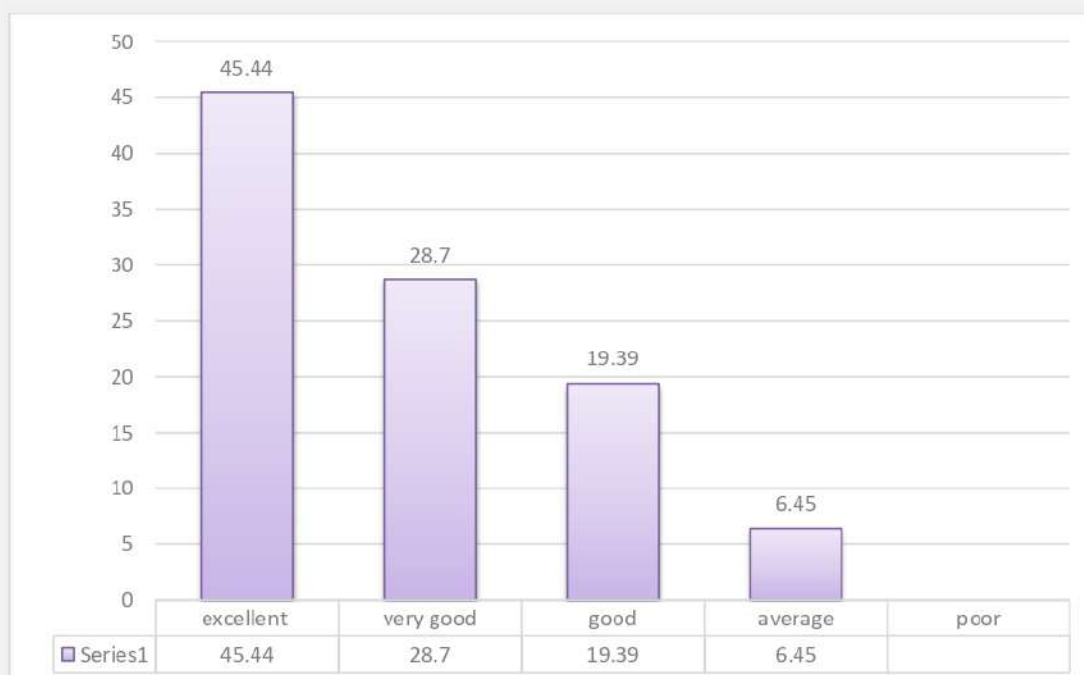
| <b>Particulars</b>   | <b>Excellent</b> | <b>Very Good</b> | <b>Good</b> | <b>Average</b> | <b>Poor</b> | <b>Total</b> |
|--|------------------|------------------|-------------|----------------|-------------|--------------|
| <b>Curriculum and syllabi of the Courses.</b>  | 1250             | 770              | 435         | 210            | 0           | <b>2665</b>  |
| <b>Planning of curriculum Transaction.</b>   | 1211             | 765              | 517         | 172            | 0           | <b>2665</b>  |
| <b>Extended Syllabi covered in the class.</b>  | 1289             | 748              | 432         | 196            | 0           | <b>2665</b>  |
| <b>Fairness in the Assessment Process?</b>   | 1304             | 735              | 439         | 187            | 0           | <b>2665</b>  |
| <b>Opportunity for students to participate in internship, student exchange programs and field visit?</b> | 1275             | 683              | 513         | 194            | 0           | <b>2665</b>  |
| <b>Opportunities for college and Inter-college competitions?</b>   | 1361             | 628              | 417         | 259            | 0           | <b>2665</b>  |
| <b>Interaction with Administration</b>   | 1328             | 679              | 419         | 239            | 0           | <b>2665</b>  |
| <b>Do you receive regular updates from the institute?</b>  | 1391             | 576              | 446         | 252            | 0           | <b>2665</b>  |
| <b>Has the Placement Cell provided ample on campus and off campus placement opportunities?</b>           | 1295             | 591              | 493         | 286            | 0           | <b>2665</b>  |
| <b>Usage of teaching aids and ICT in the class by faculty to facilitate Teaching?</b>                    | 1341             | 697              | 387         | 240            | 0           | <b>2665</b>  |

|   |      |     |     |     |   |             |
|---|------|-----|-----|-----|---|-------------|
| <b>Institute handles students' Grievances properly?</b>   | 1285 | 714 | 469 | 197 | 0 | <b>2665</b> |
| <b>Do you get availability of course information through website and brochure for each program?</b> | 1250 | 770 | 435 | 210 | 0 | <b>2665</b> |
| <b>Course delivery by faculty member in the class?</b>  | 1289 | 789 | 400 | 187 | 0 | <b>2665</b> |
| <b>The quality of courses and curriculum delivery offered to you?</b>                               | 1311 | 765 | 400 | 189 | 0 | <b>2665</b> |
| <b>How do you rate Library/Laboratory /Equipment/Computer facilities?</b>                           | 1341 | 765 | 376 | 183 | 0 | <b>2665</b> |
| <b>How do you rate Hostel &amp; Canteen facilities?</b>   | 1305 | 749 | 439 | 172 | 0 | <b>2665</b> |
| <b>How do you rate sports and cultural facilities?</b>  | 1274 | 767 | 437 | 187 | 0 | <b>2665</b> |
| <b>How do you rate internet &amp; WiFi facilities?</b>  | 1237 | 754 | 476 | 198 | 0 | <b>2665</b> |
| <b>How do you rate Classrooms/Infrastructure facilities &amp; Extra-Curricular activities?</b>      | 1344 | 767 | 389 | 165 | 0 | <b>2665</b> |
| <b>Overall Learning Experience?</b>   | 1312 | 765 | 432 | 156 | 0 | <b>2665</b> |

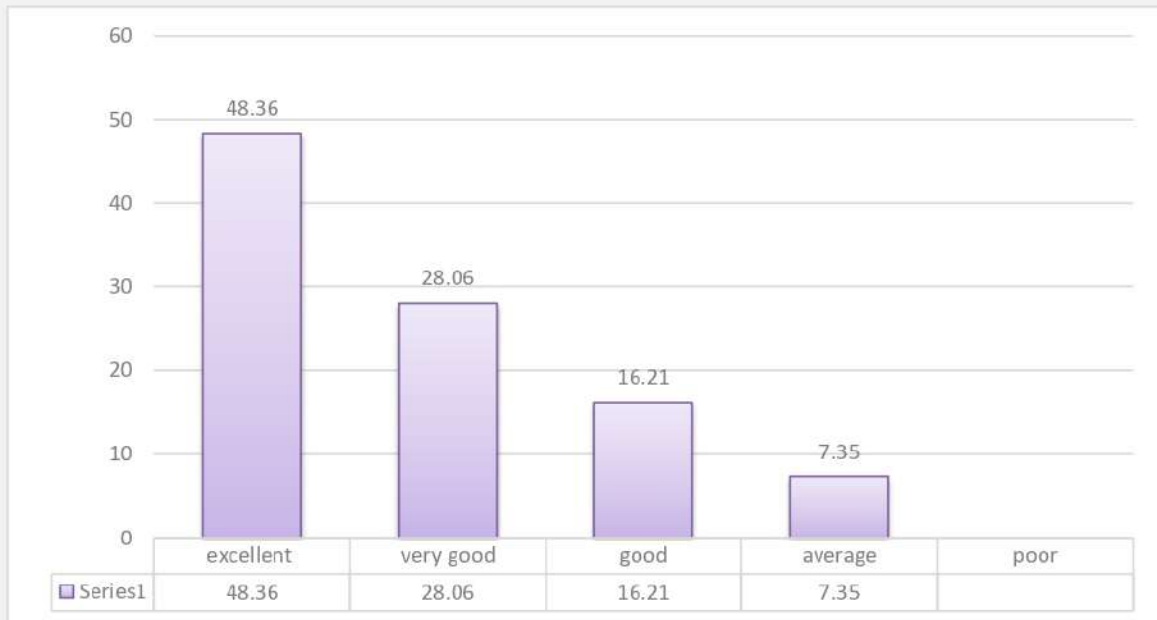
## ❖ Curriculum and syllabi of the Courses



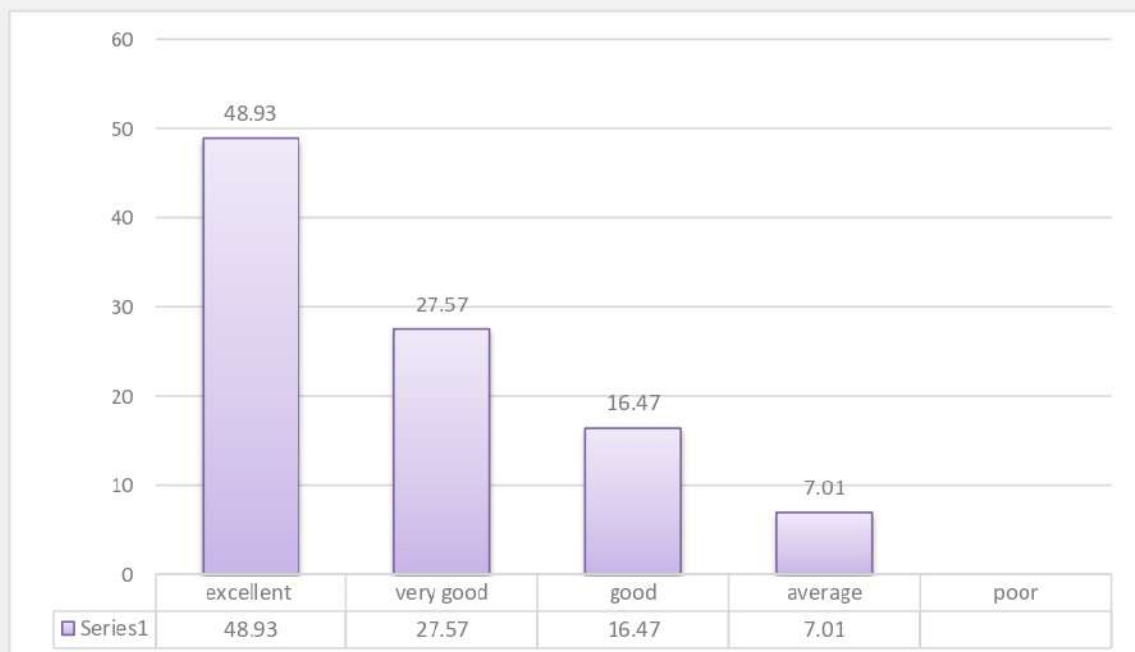
## ❖ Planning of curriculum Transaction



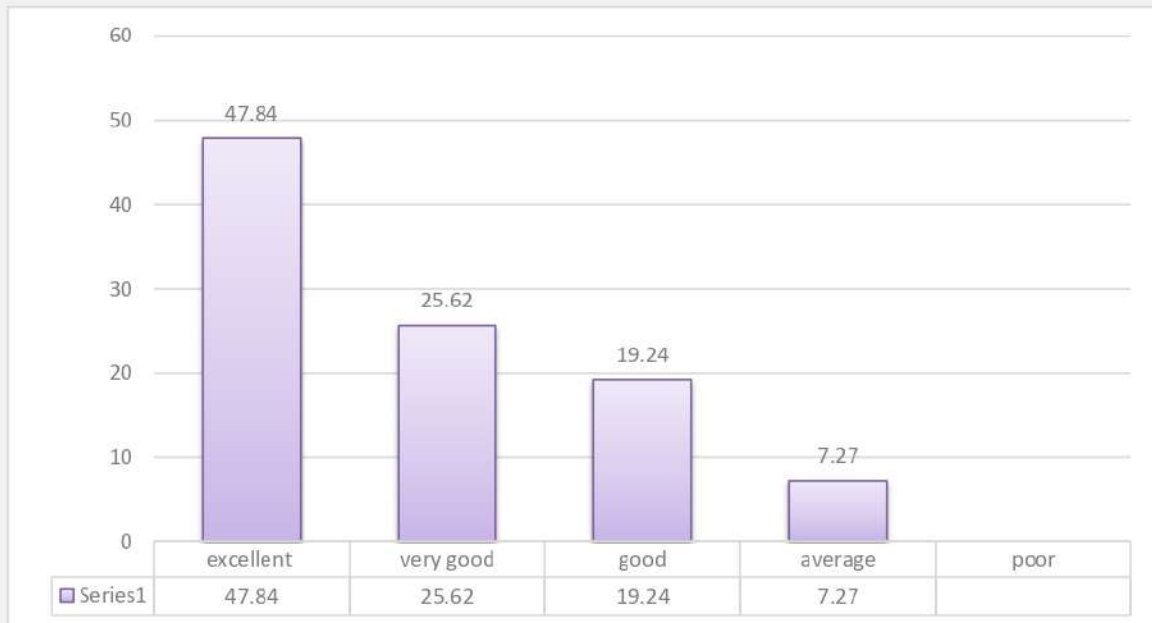
## ❖ Extended Syllabi covered in the class



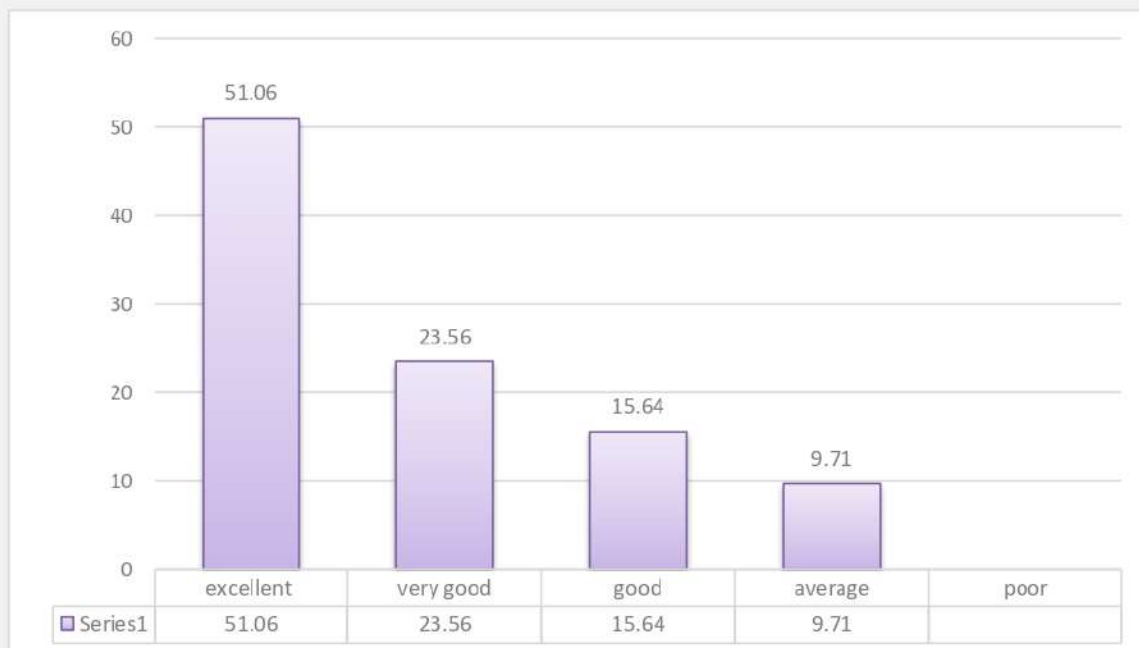
## ❖ Fairness in the Assessment Process



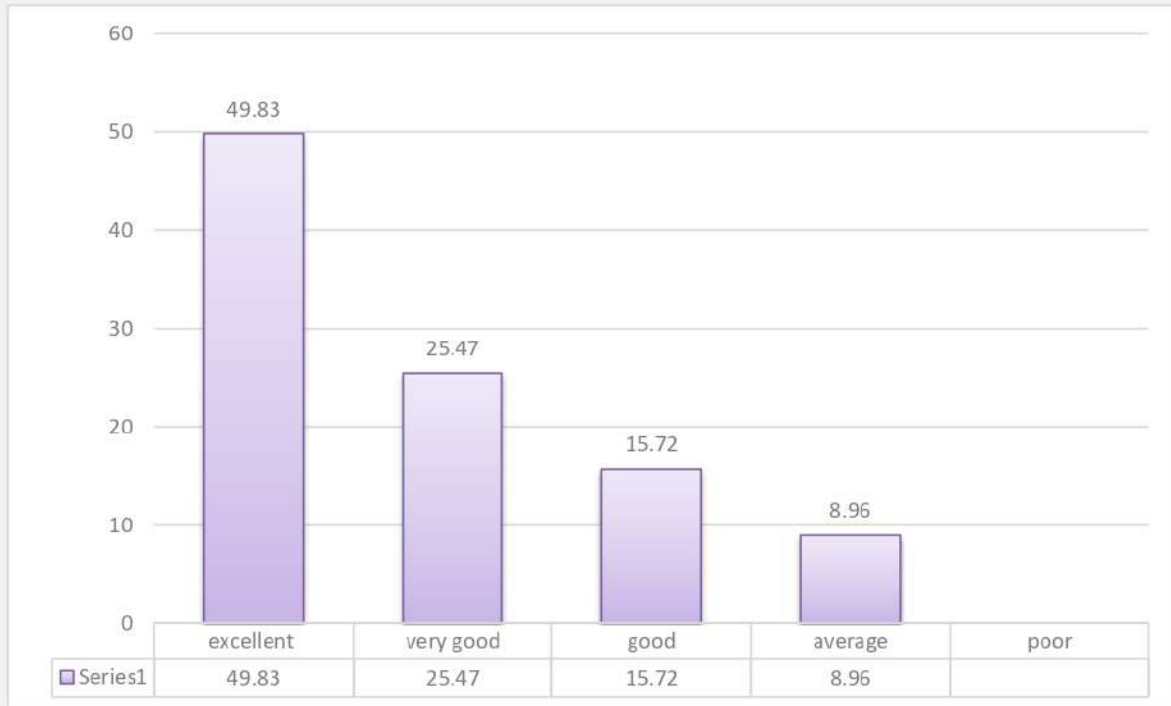
❖ **Opportunity for students to participate in Internship, Student Exchange Programs and Field Visit**



❖ **Opportunities for college and Inter-college Competitions?**



## ❖ Interaction with Administration



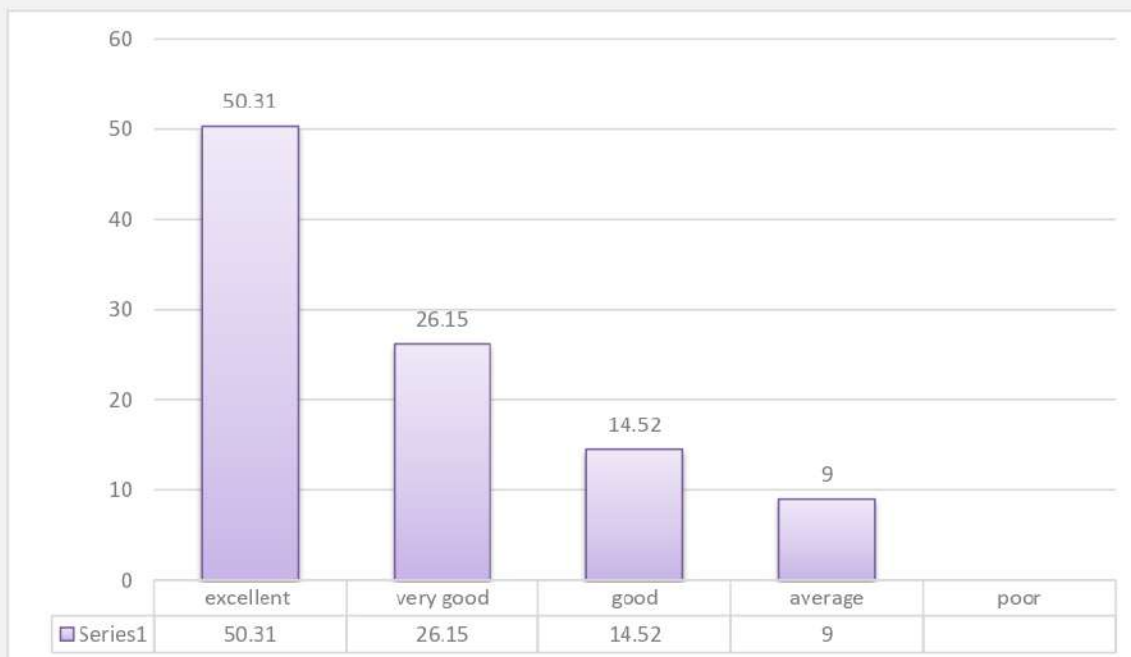
## ❖ Do you receive regular updates from the institute?



❖ **Has the Placement Cell provided ample on campus and off campus placement opportunities?**

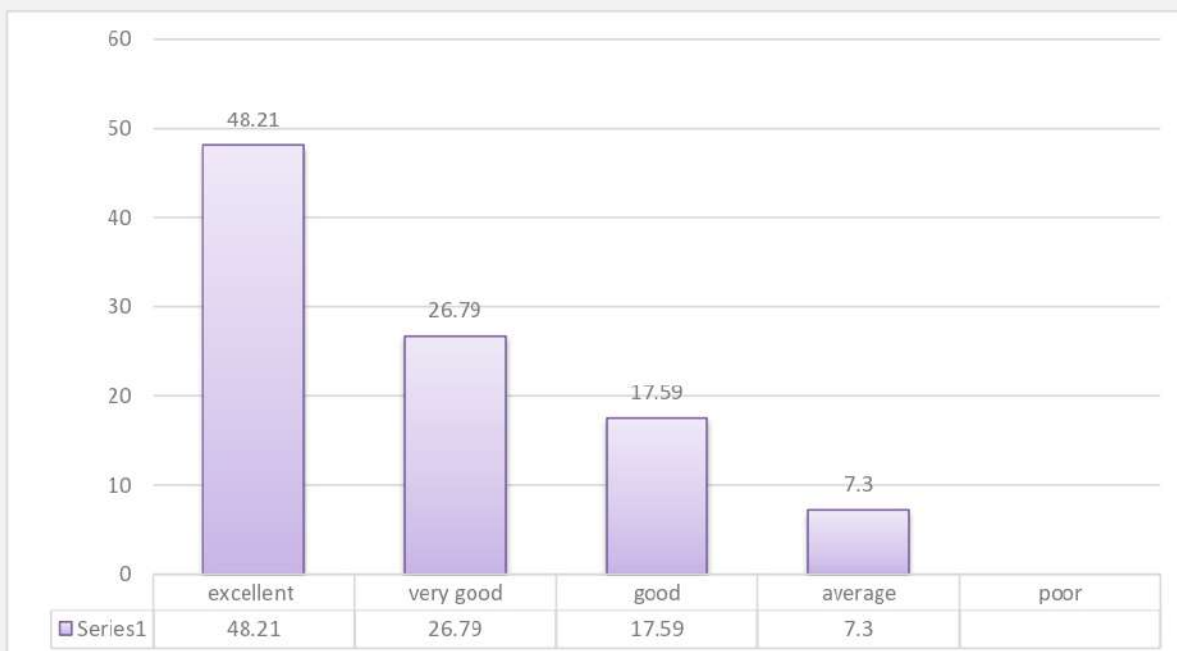


❖ **Usage of teaching aids and ICT in the class by faculty to facilitate Teaching.**

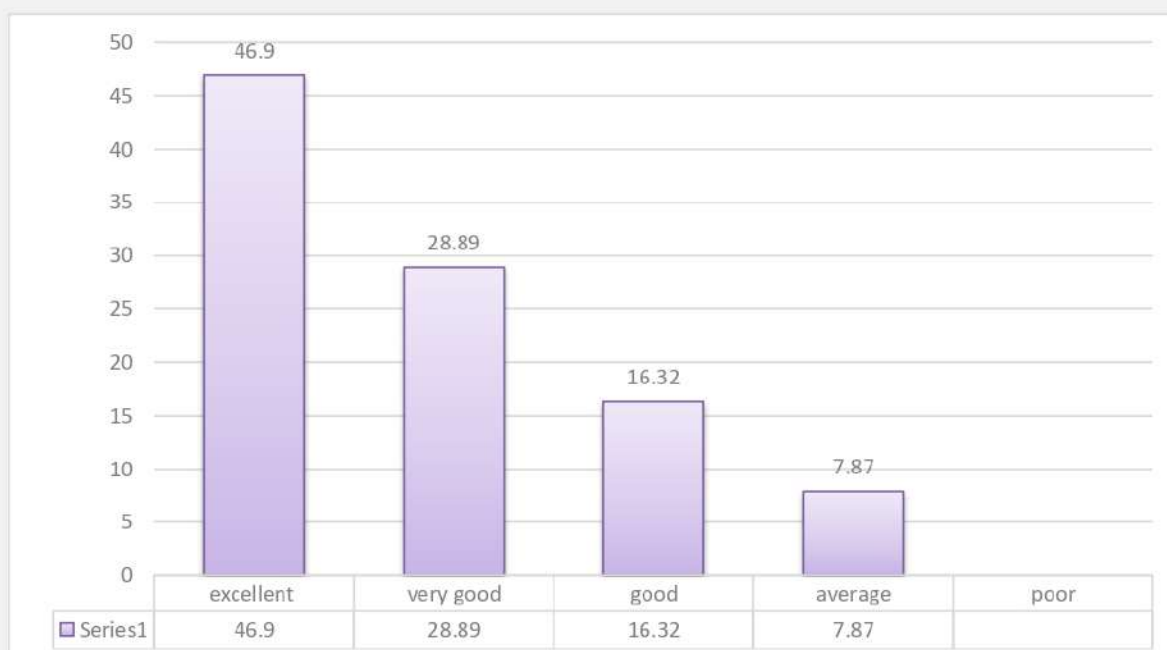




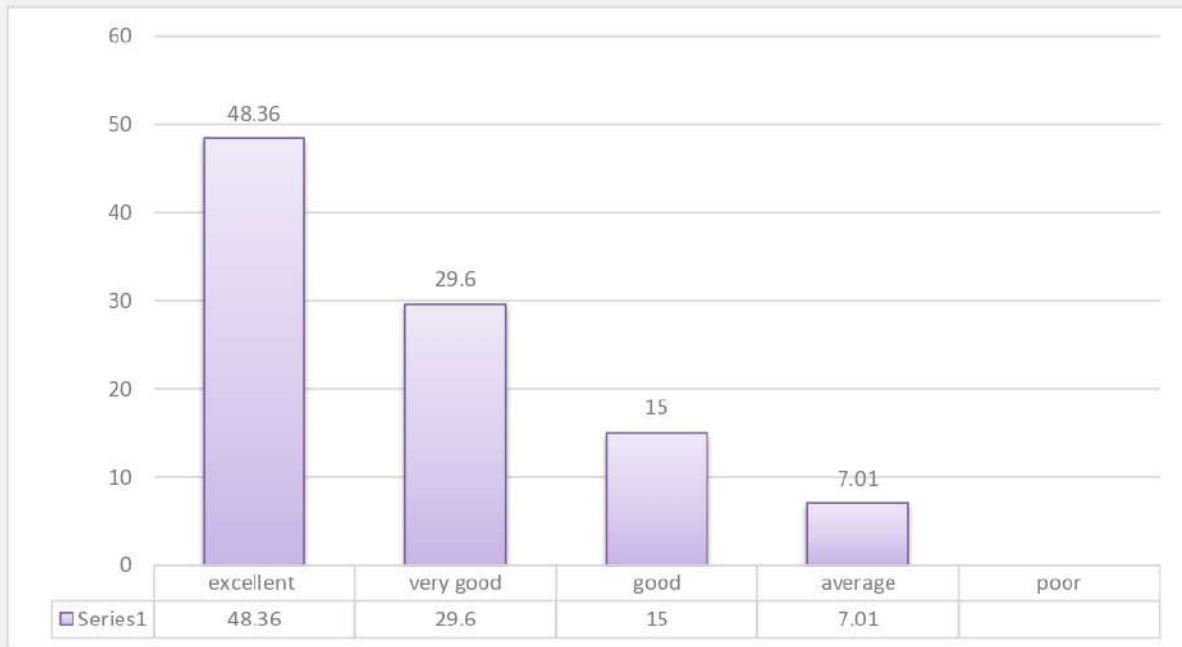
### ❖ Institute handles students' Grievances properly



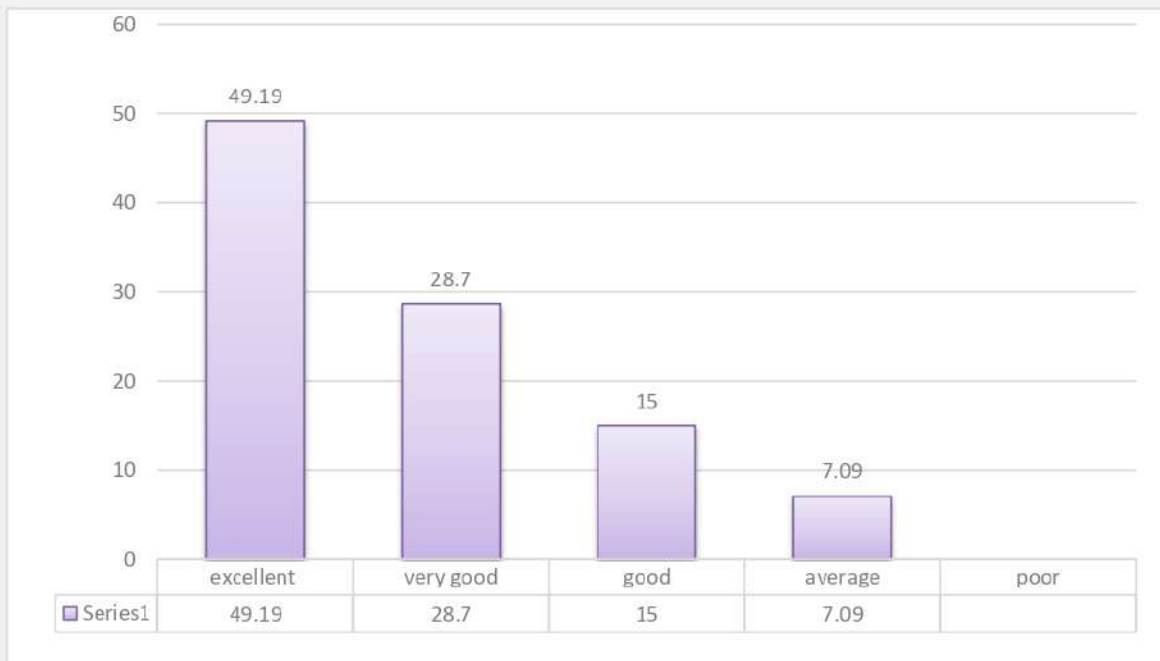
### ❖ Do you get availability of course information through website and brochure for each program?



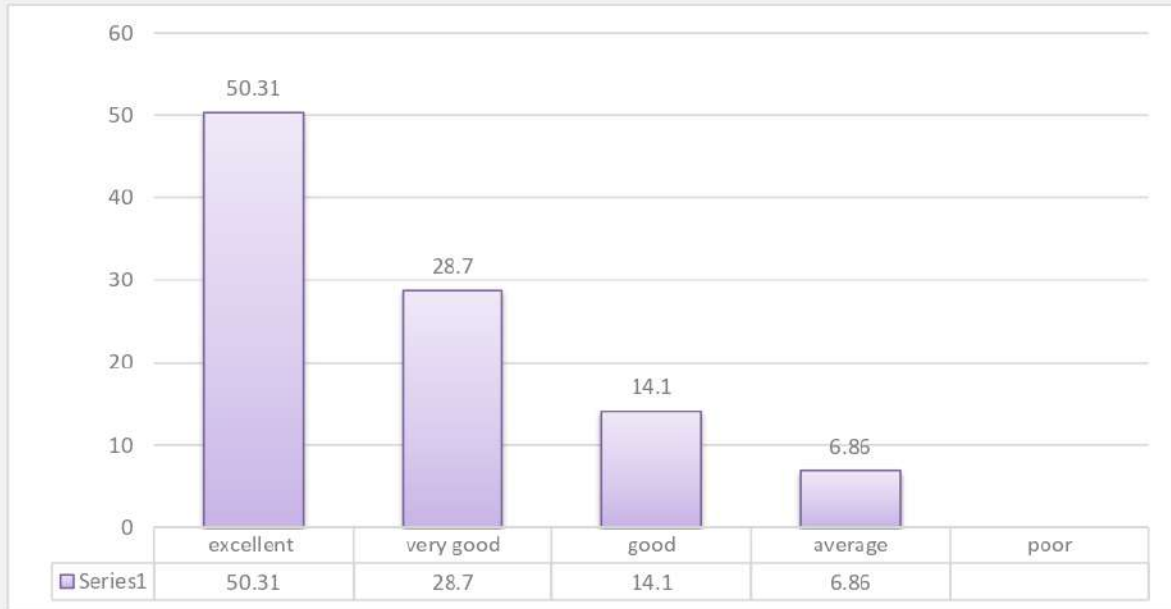
❖ **Course delivery by faculty member in the class**



❖ **The quality of courses and curriculum delivery offered to you**



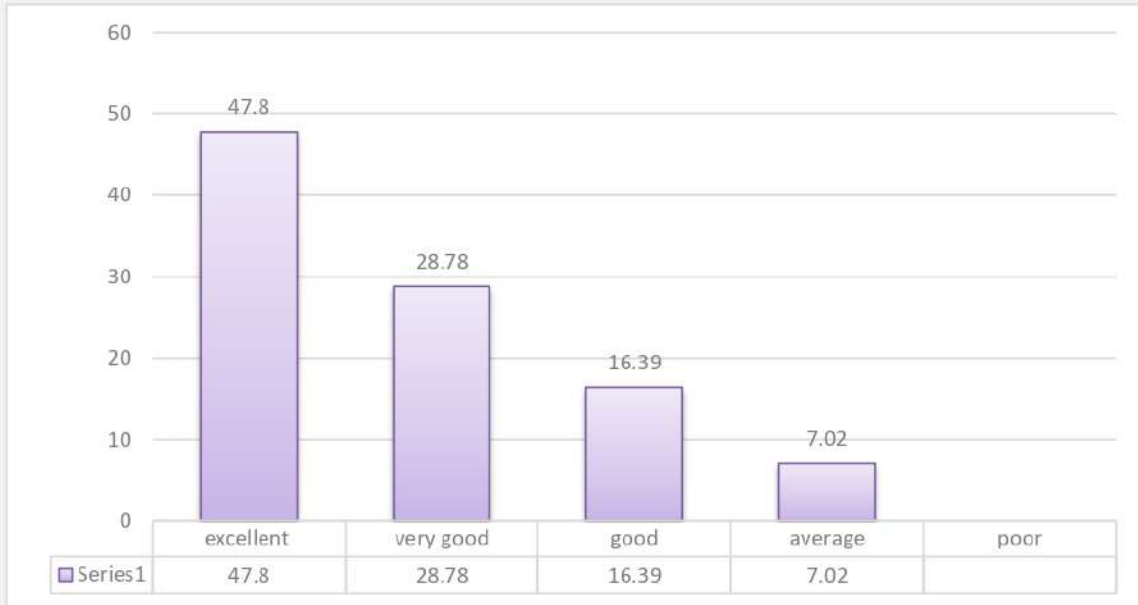
❖ **How do you rate Library/Laboratory /Equipment/Computer facilities?**



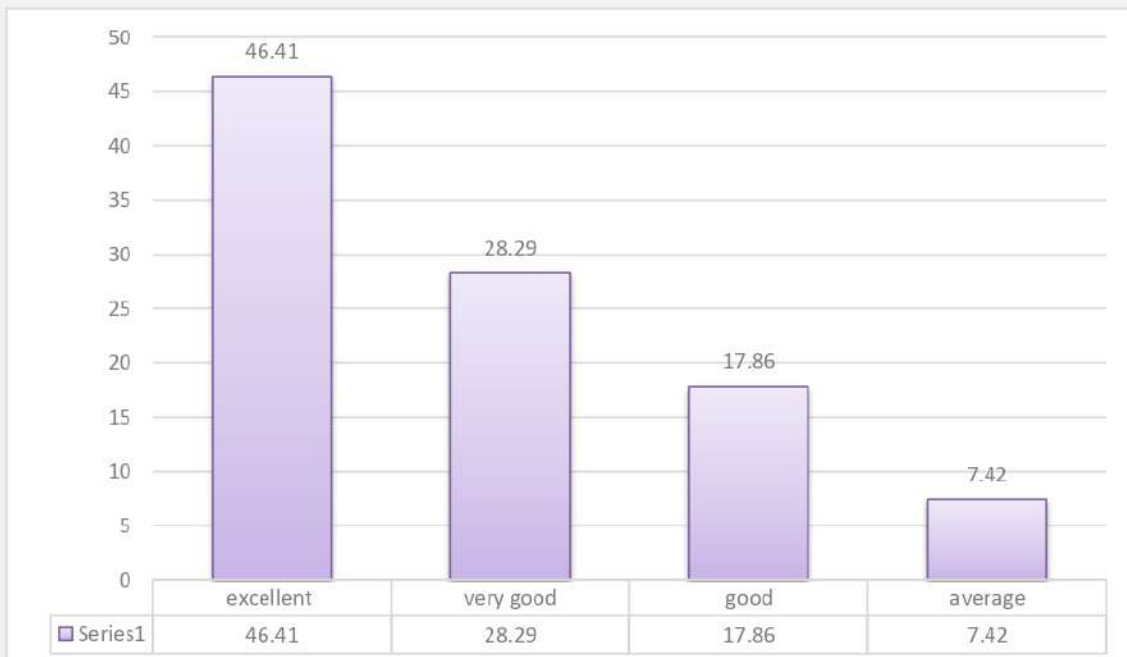
❖ **How do you rate Hostel & Canteen facilities?**



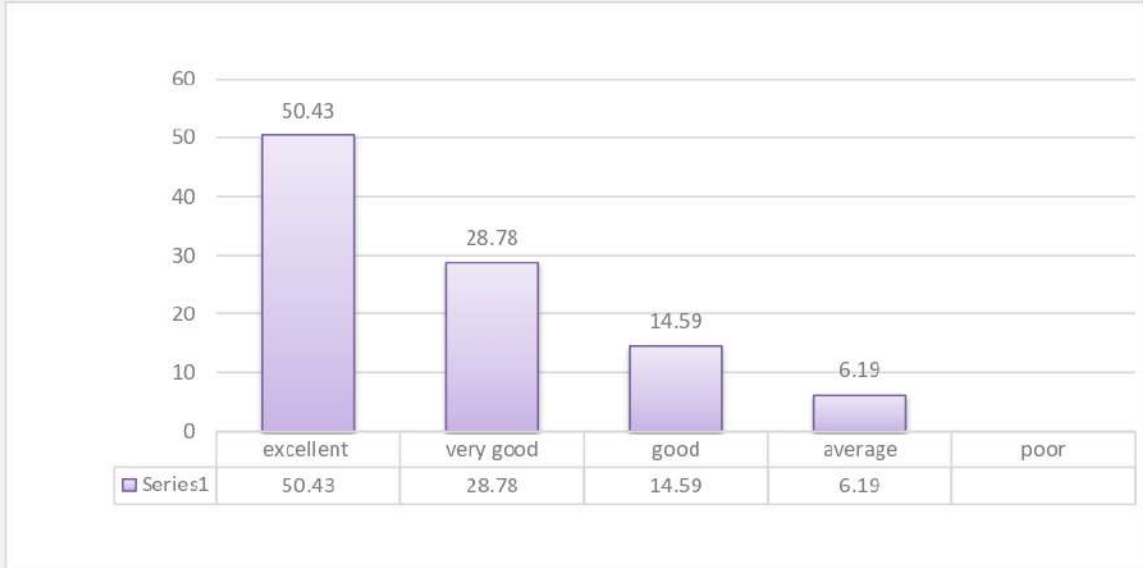
❖ **How do you rate Sports and Cultural facilities?**



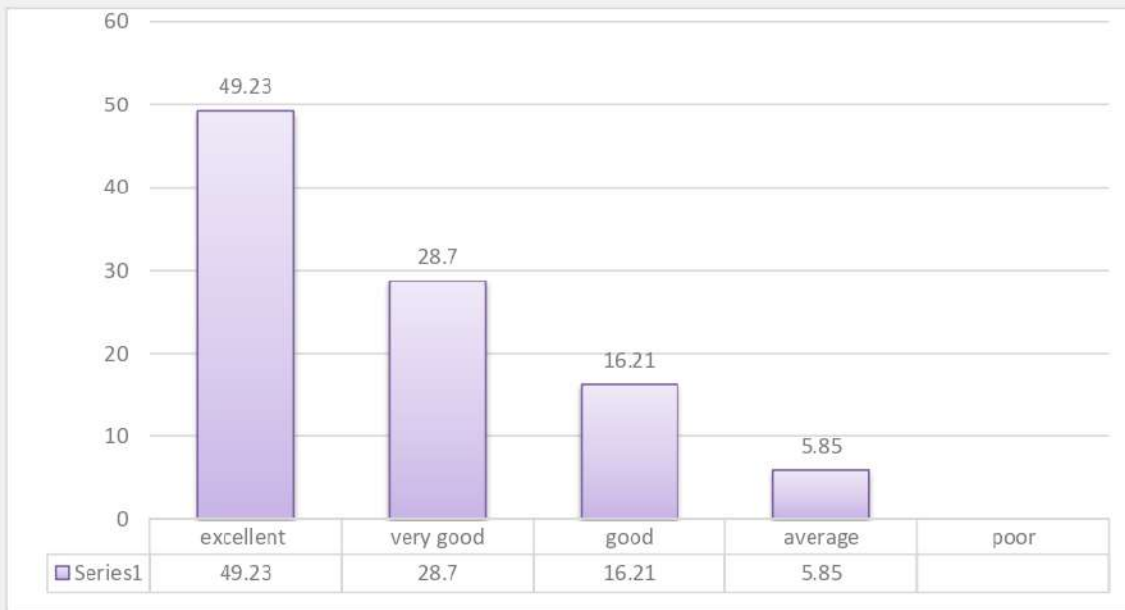
❖ **How do you rate Internet & Wi-Fi facilities?**



❖ **How do you rate Classrooms/Infrastructure facilities & Extra-Curricular activities?**



❖ **Overall Learning Experience?**



*[Handwritten Signature]*  
**Principal**  
**SWAMI SWATANTRAHAND MEMORIAL COLLEGE**  
**Dinanagar (Gurdaspur)**