



SWAMI SWATANTRANAND MEMORIAL COLLEGE, DINANAGAR

(Affiliated to G.N.D.U Amritsar| Accredited with 'A' Grade by NAAC)

EMPLOYER FEEDBACK ANALYSIS

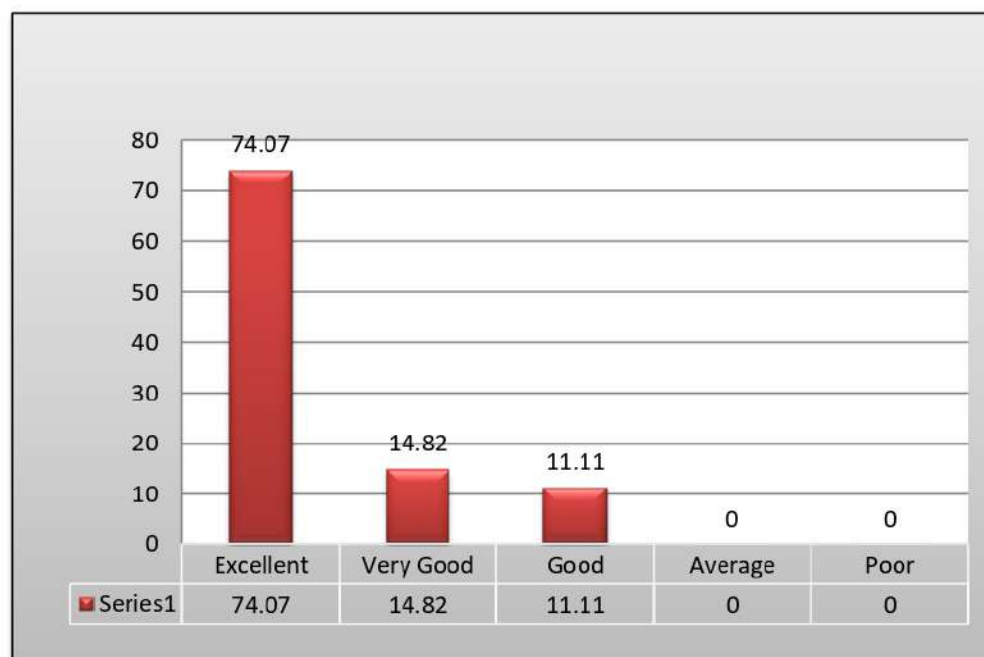
SESSION (2019-20)

Particulars	Excellent	Very Good	Good	Average	Poor	Total
Ability to contribute the goal of the organization.	19	4	4	0	0	27
Technical Knowledge/skill ability to manage/ leadership/ Innovativeness .	20	4	3	0	0	27
Creativity	21	3	3	0	0	27
Relationship with seniors/ peers/ subordinates.	21	4	2	0	0	27
Involvement in social activities.	22	3	2	0	0	27
Ability and motivation for social activity.	21	5	1	0	0	27
Obligation to work beyond schedule if required.	20	4	3	0	0	27
Overall impression about their performance.	18	7	2	0	0	27

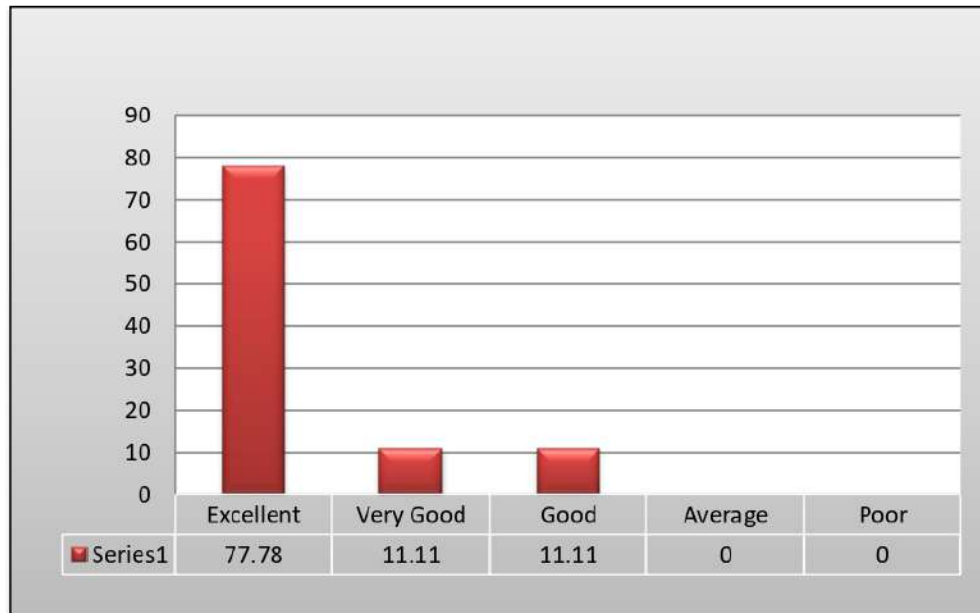
- **Ability to contribute the goal of the organization.**



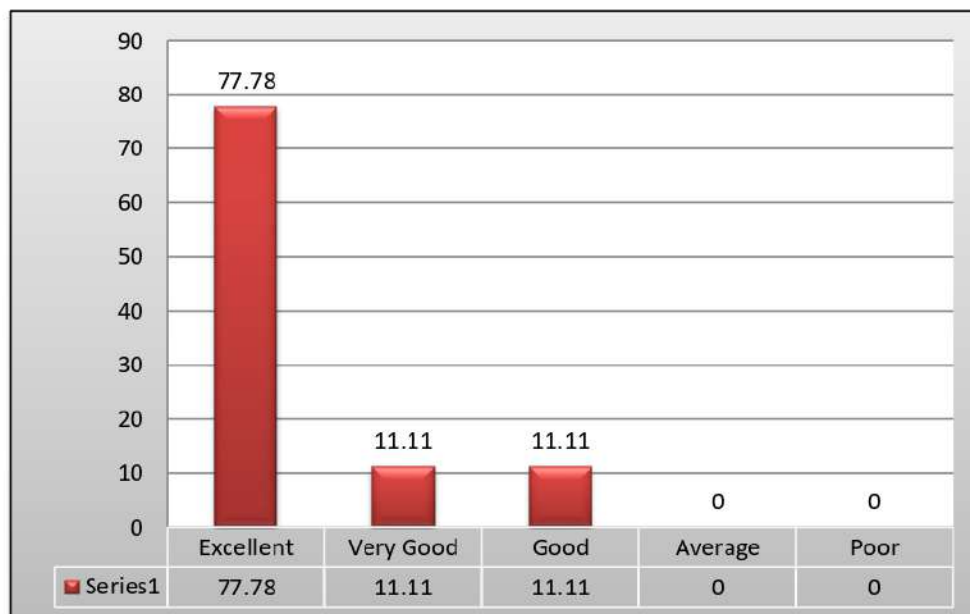
- **Technical knowledge/skill ability to manage/ leadership/Innovativeness.**



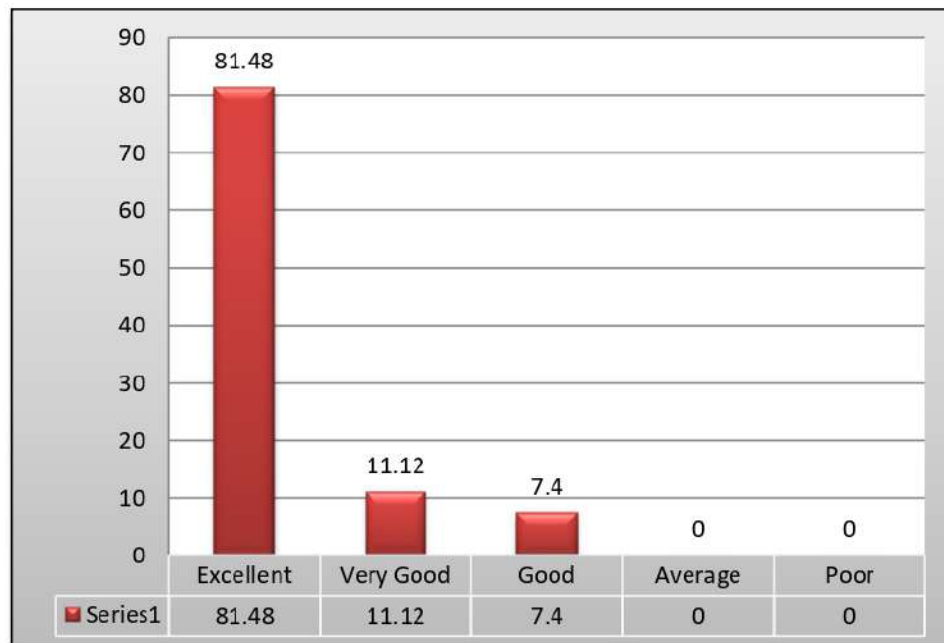
- **Creativity**



- **Relationship with seniors/ peers/ subordinates.**



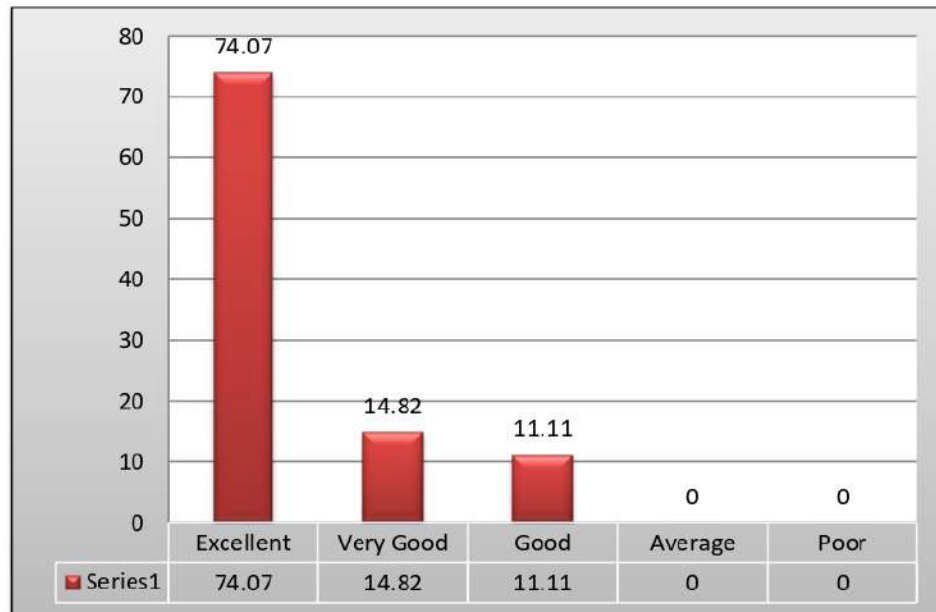
- **Involvement in social activities.**



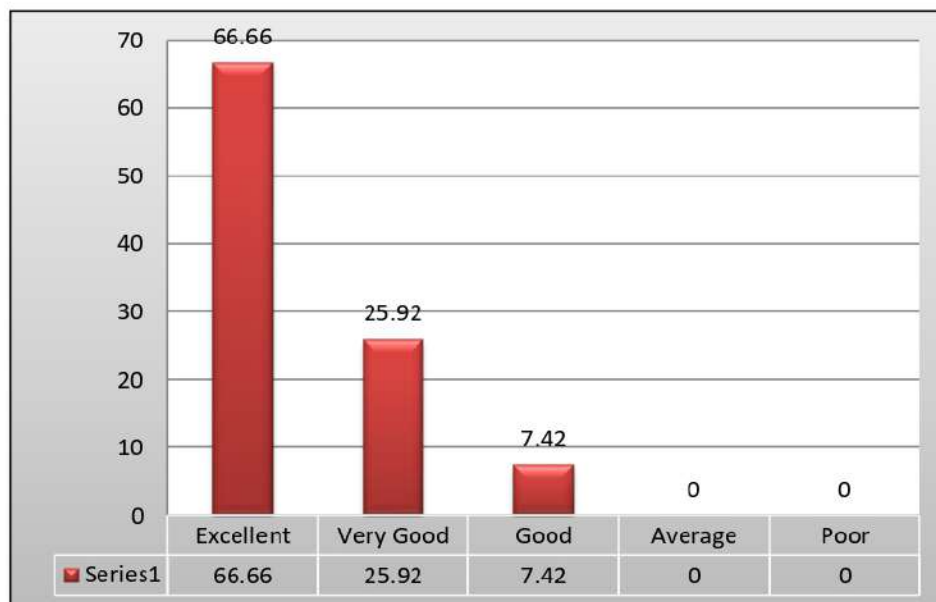
- **Ability and motivation for social activity.**



- **Obligation to work beyond schedule if required.**



- **Overall impression about their performance.**



[Signature]
Principal
SWAMI SWATANTRAMAND MEMORIAL COLLEGE
Dinanagar (Gurdaspur)