



SWAMI SWATANTRANAND MEMORIAL COLLEGE, DINANAGAR

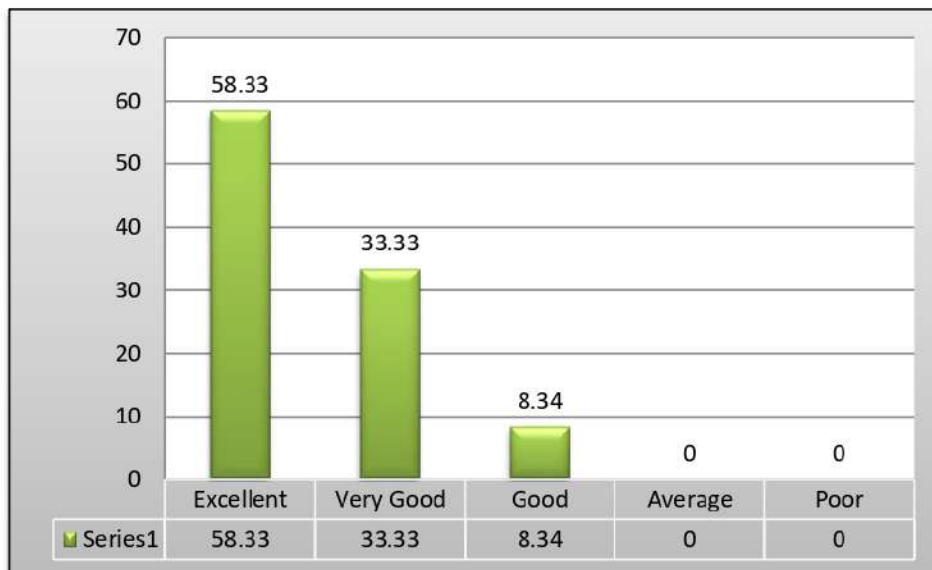
(Affiliated to G.N.D.U Amritsar| Accredited with 'A' Grade by NAAC)

EMPLOYER FEEDBACK ANALYSIS

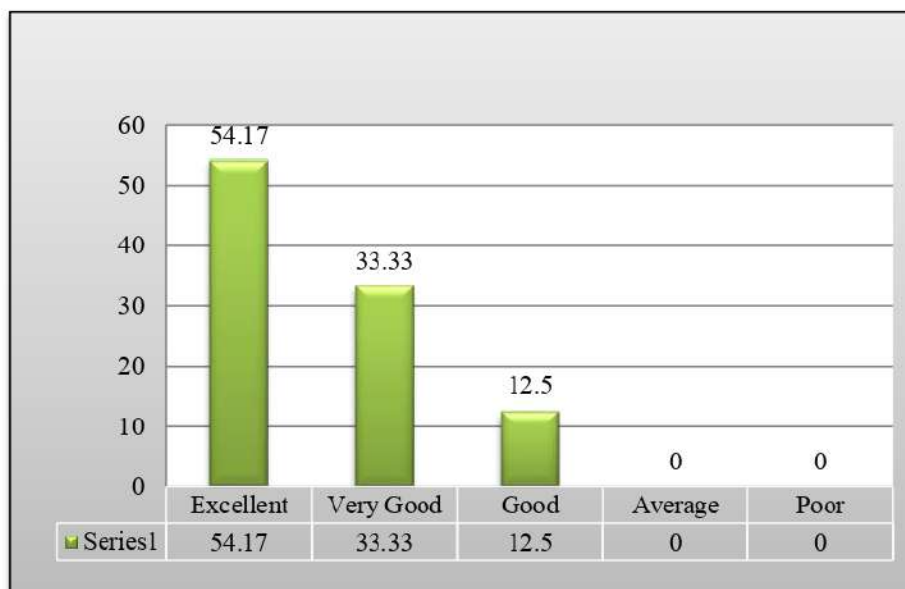
SESSION (2018-19)

Particulars	Excellent	Very Good	Good	Average	Poor	Total
Ability to contribute the goal of the organization.	14	8	2	0	0	24
Technical Knowledge/skill ability to manage/ leadership/ Innovativeness .	13	8	3	0	0	24
Creativity	12	7	5	0	0	24
Relationship with seniors/ peers/ subordinates.	14	7	3	0	0	24
Involvement in social activities.	13	7	4	0	0	24
Ability and motivation for social activity.	14	9	1	0	0	24
Obligation to work beyond schedule if required.	12	8	4	0	0	24
Overall impression about their performance.	11	10	3	0	0	24

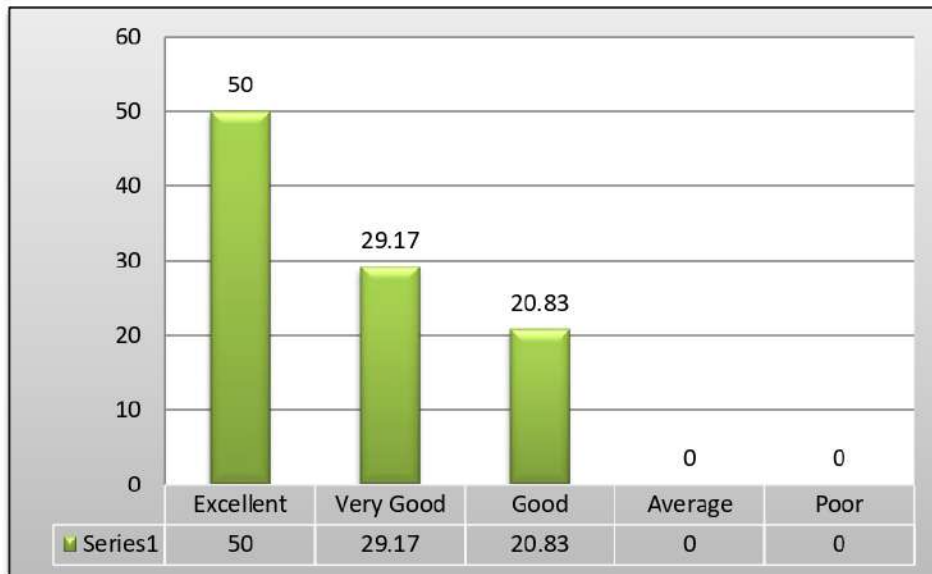
- **Ability to contribute the goal of the organization.**



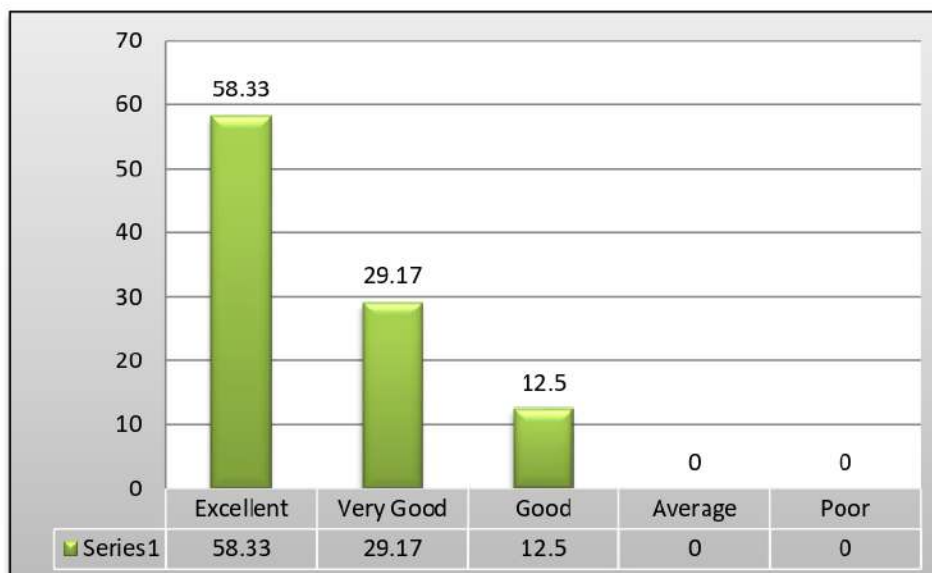
- **Technical knowledge/ skill ability to manage/leadership/ Innovativeness.**



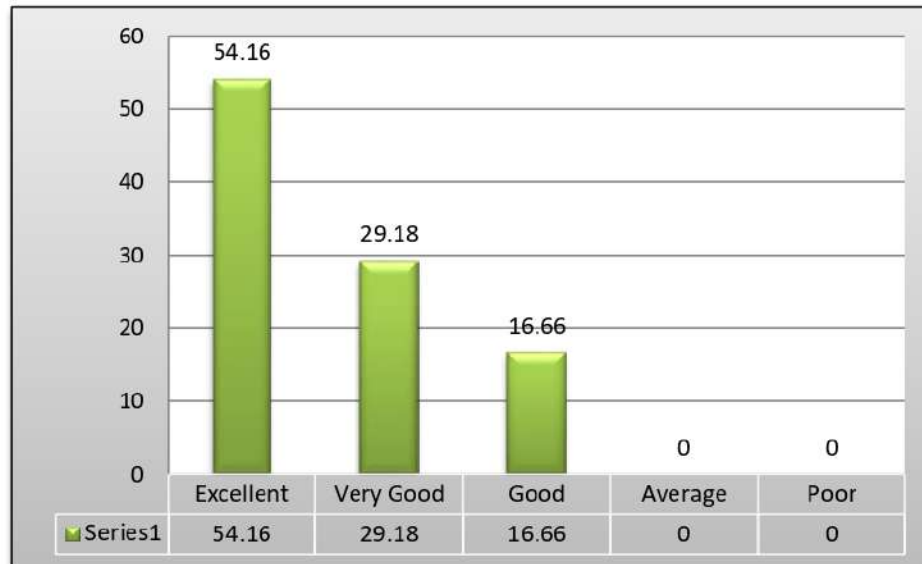
- **Creativity**



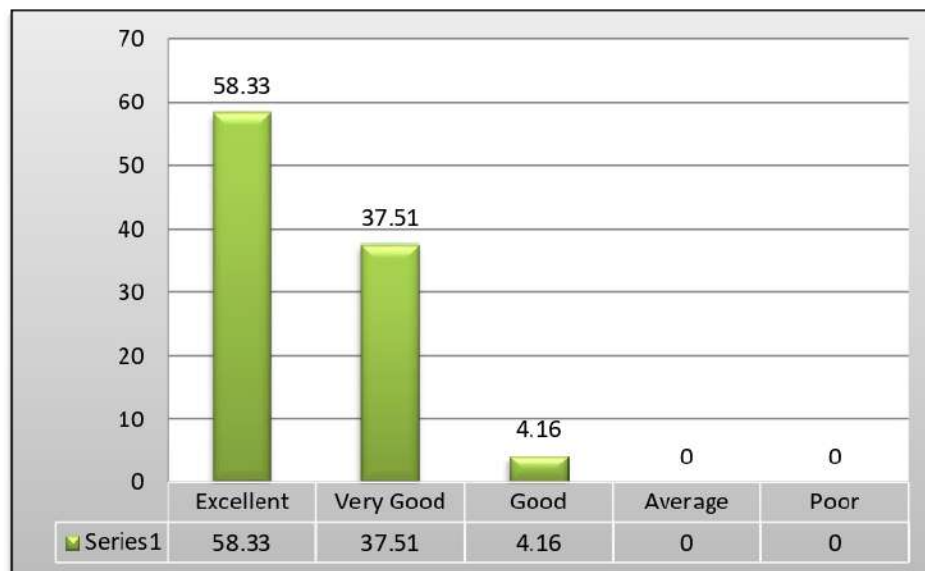
- **Relationship with seniors/ peers/ subordinates.**



- **Involvement in social activities.**



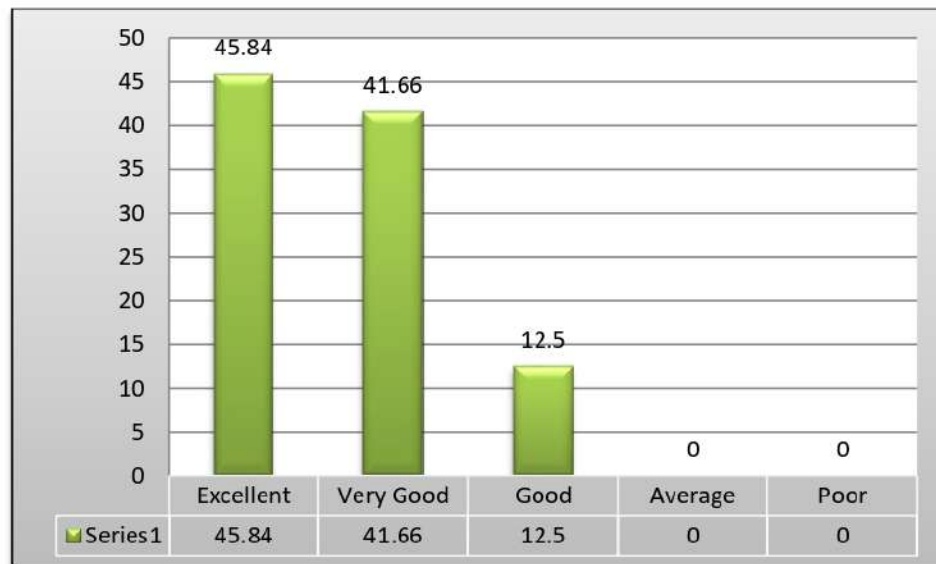
- **Ability and motivation for social activity.**



- **Obligation to work beyond schedule if required.**



- **Overall impression about their performance.**



[Signature]
Principal
SWAMI SWATANTRAMAND MEMORIAL COLLEGE
Dinanagar (Gundlupur)