



SWAMI SWATANTRANAND MEMORIAL COLLEGE, DINANAGAR

(Affiliated to G.N.D.U Amritsar| Accredited with 'A' Grade by NAAC)

EMPLOYER FEEDBACK ANALYSIS

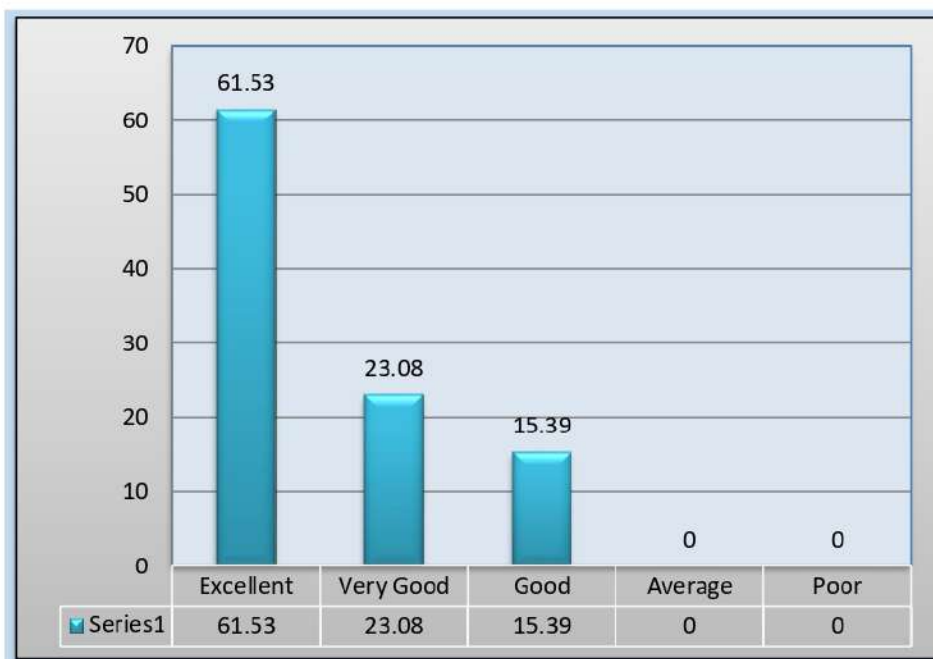
SESSION (2017-18)

Particulars	Excellent	Very Good	Good	Average	Poor	Total
Ability to contribute the goal of the organization.	7	4	2	0	0	13
Technical Knowledge/skill ability to manage/ leadership/ Innovativeness .	8	3	2	0	0	13
Creativity	7	5	1	0	0	13
Relationship with seniors/ peers/ subordinates.	8	4	1	0	0	13
Involvement in social activities.	7	3	3	0	0	13
Ability and motivation for social activity.	8	3	2	0	0	13
Obligation to work beyond schedule if required.	7	4	2	0	0	13
Overall impression about their performance.	7	3	3	0	0	13

- **Ability to contribute the goal of the organization.**



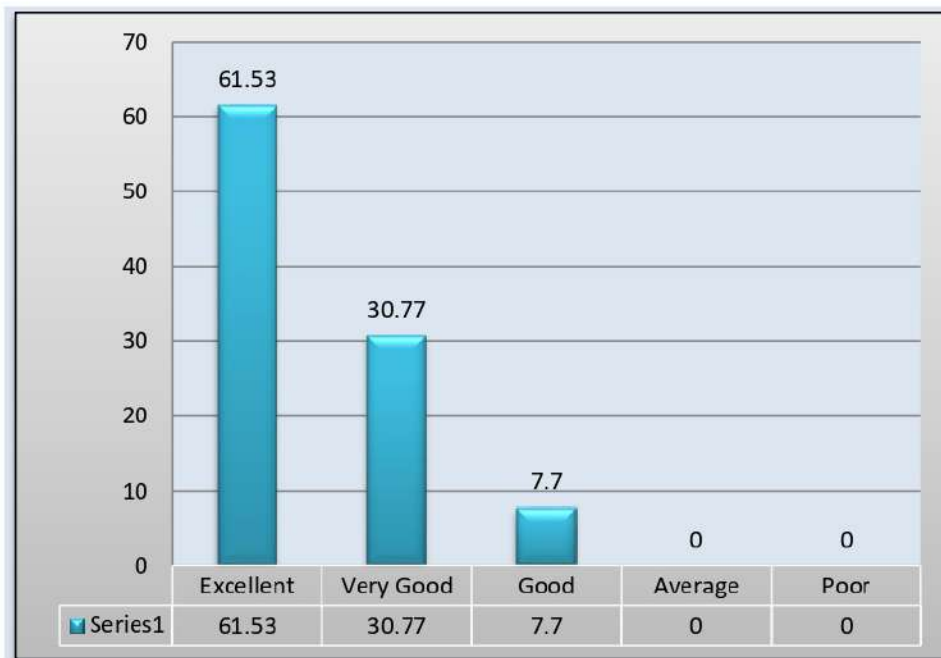
- **Technical knowledge/skill ability to manage/ leadership/ Innovativeness.**



- **Creativity**



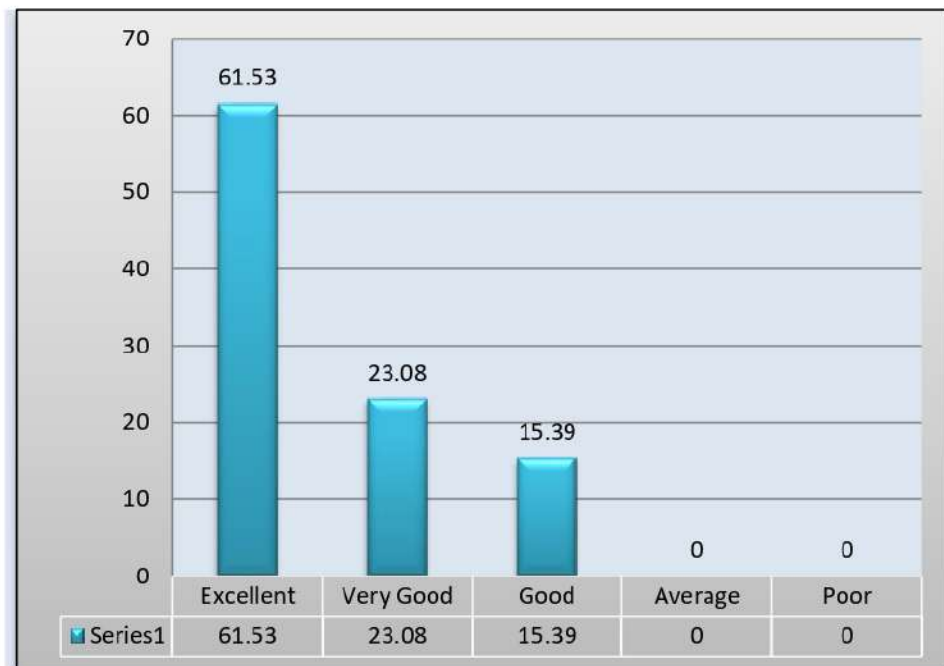
- **Relationship with seniors/ peers/ subordinates.**



- **Involvement in social activities.**



- **Ability and motivation for social activity.**



- Obligation to work beyond schedule if required.**



- Overall impression about their performance.**




Principal
SWAMI SWATANTRAMANAND MEMORIAL COLLEGE
Dinanagar (Gurdaspur)