



# **Swami Swatantranand Memorial College, Dinanagar**

**(Affiliated to G.N.D.U Amritsar| Accredited with 'A' Grade by NAAC)**

## **Alumni' Feedback Analysis**

**Session: 2022-23**

## Overall Rating Program of Study

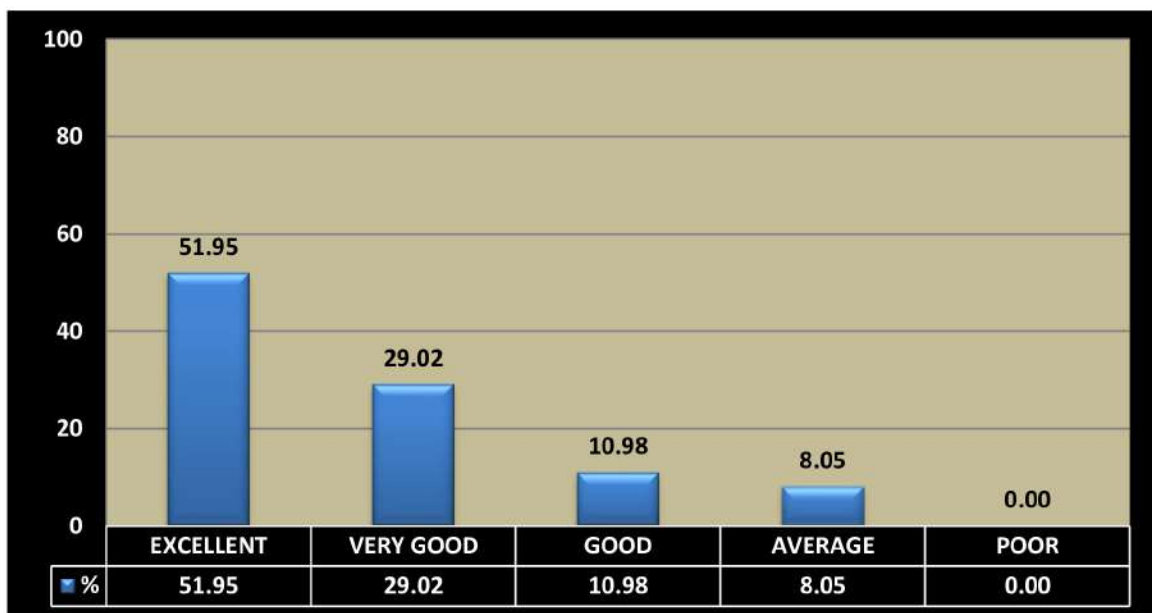
Particulars	Excellent	Very Good	Good	Average	Poor	Total
Do you feel proud to be associated with SSM Cas Alumni?	459	148	131	82	0	820
Overall development of students by various kinds of activities organized by the college:	426	238	90	66	0	820
Are you willing to contribute in the development of the institute?	500	156	107	57	0	820
How do you rate the handling of student's grievance?	435	180	123	82	0	820
Laboratories and equipments for Practical Experiences	508	180	98	34	0	820
Education imparted at SSMC in present scenario:	467	205	90	58	0	820
Placement opportunities on campus and Off campus provided by the college.	418	172	148	82	0	820
Do you like to join the Institute Alumni Association?	484	148	131	57	0	820

How do you rate the Course content?	426	180	173	41	0	820
How do you rate laboratories/library/ Seminar/reading room facilities?	402	246	90	82	0	820
How do you rate computer facilities:	492	189	139	0	0	820
How do you rate Internet & Wi-Fi facilities?	444	155	139	82	0	820
How do you rate sport and cultural facilities?	385	271	90	74	0	820
How do you rate class room facilities?	435	212	91	82	0	820
How do you rate Canteen Facilities/Hostel facilities?	508	164	114	34	0	820
How do you rate Overall Infrastructure of the college?	549	148	123	0	0	820
Rate the adequate knowledge gained during your course of study.	467	157	139	57	0	820
Have you availed career counseling and guidance for higher studies from T &P cell?	418	246	82	74	0	820
Will your e commend your relative/friends to enroll at SSMC?	385	271	164	0	0	820

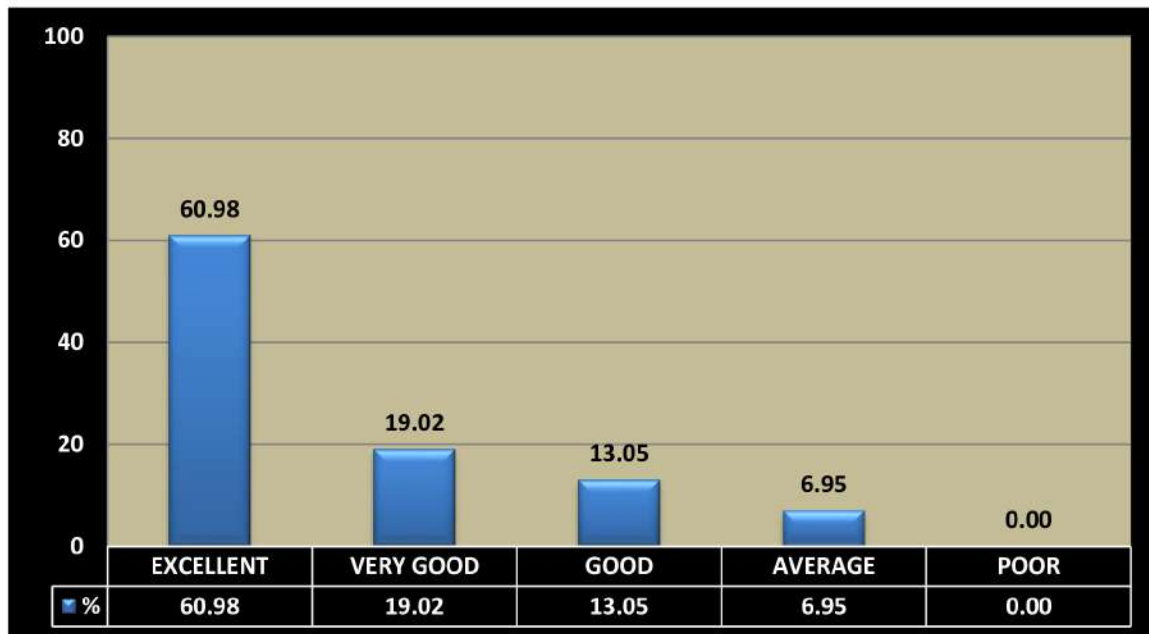
✓ **Do you feel proud to be associated with SSMC asan Alumni?**



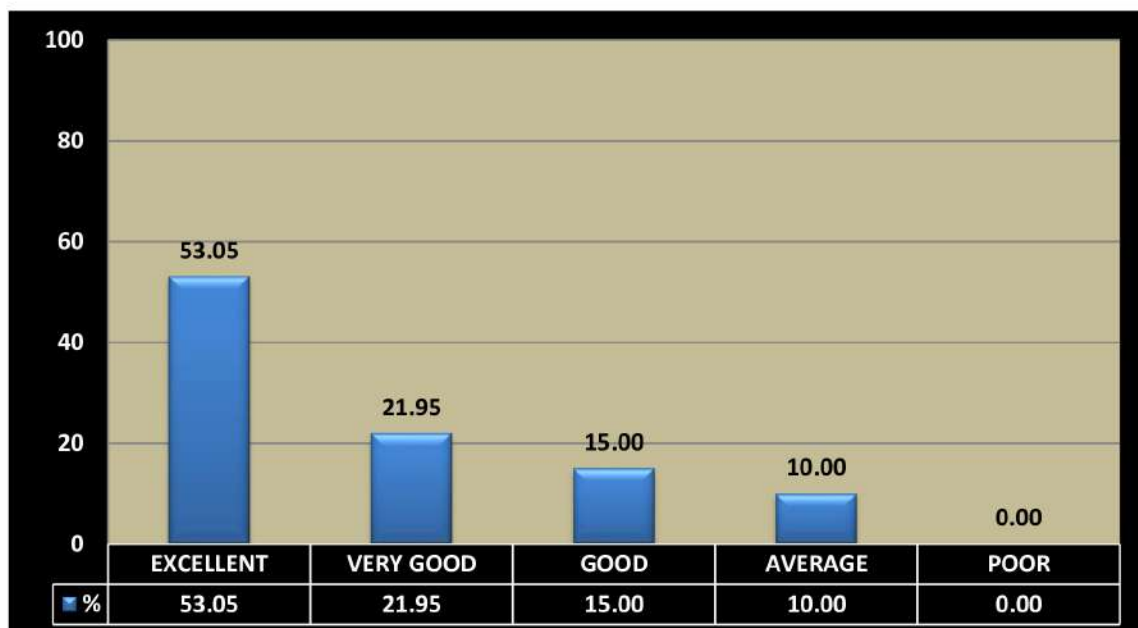
✓ **Overall development of students by various kinds of activities organized by the college:**



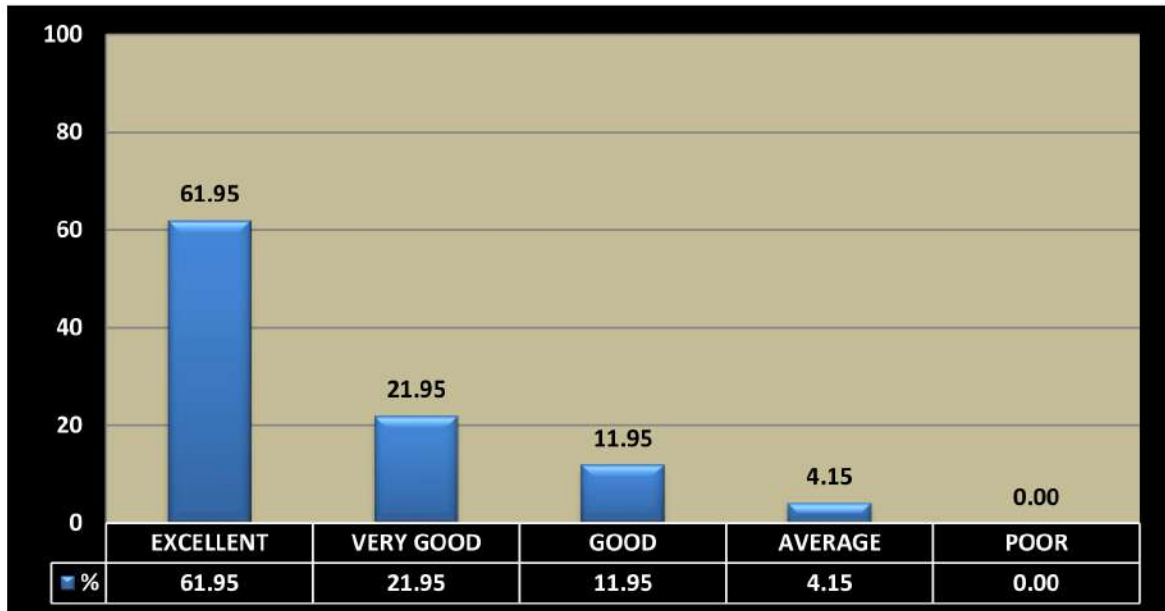
✓ Are you willing to contribute in the development of the institute?



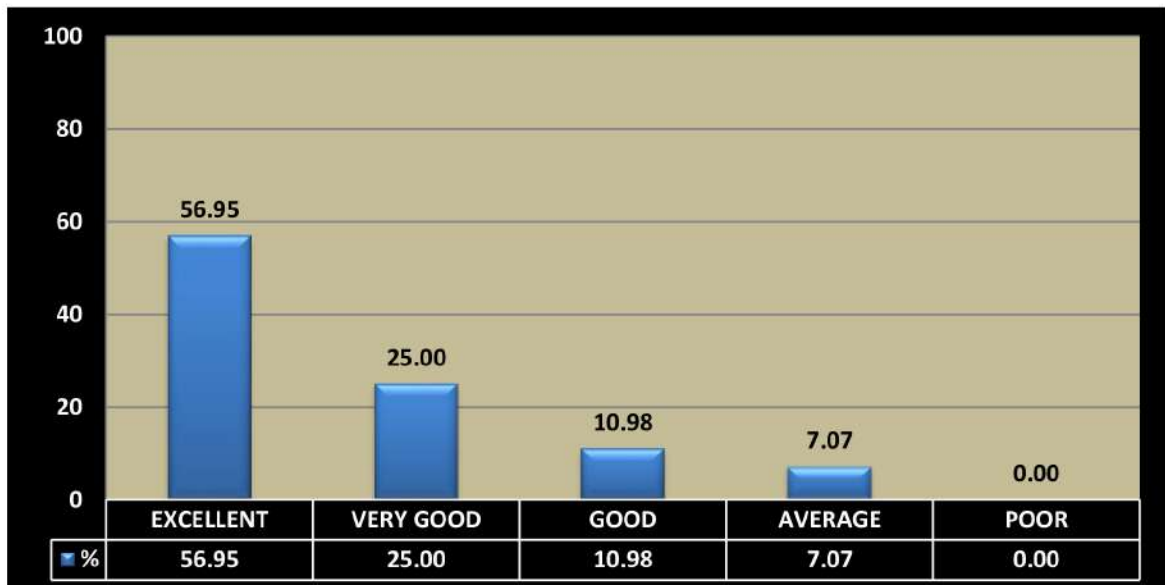
✓ How do you rate the handling of student's grievance?



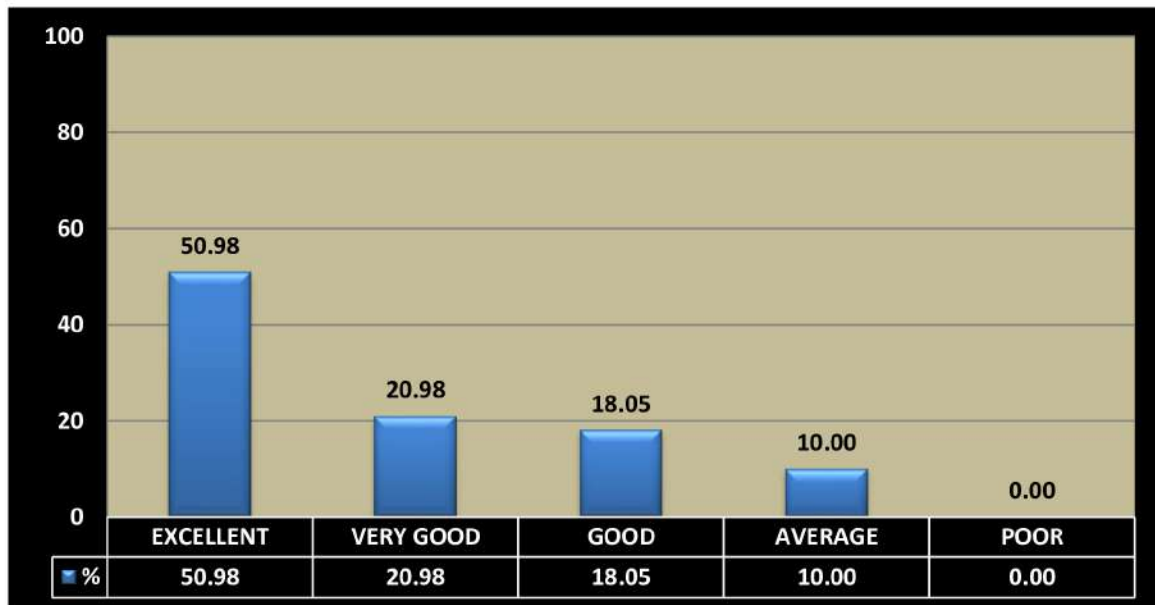
### ✓ Laboratories and equipment for Practical Experiences



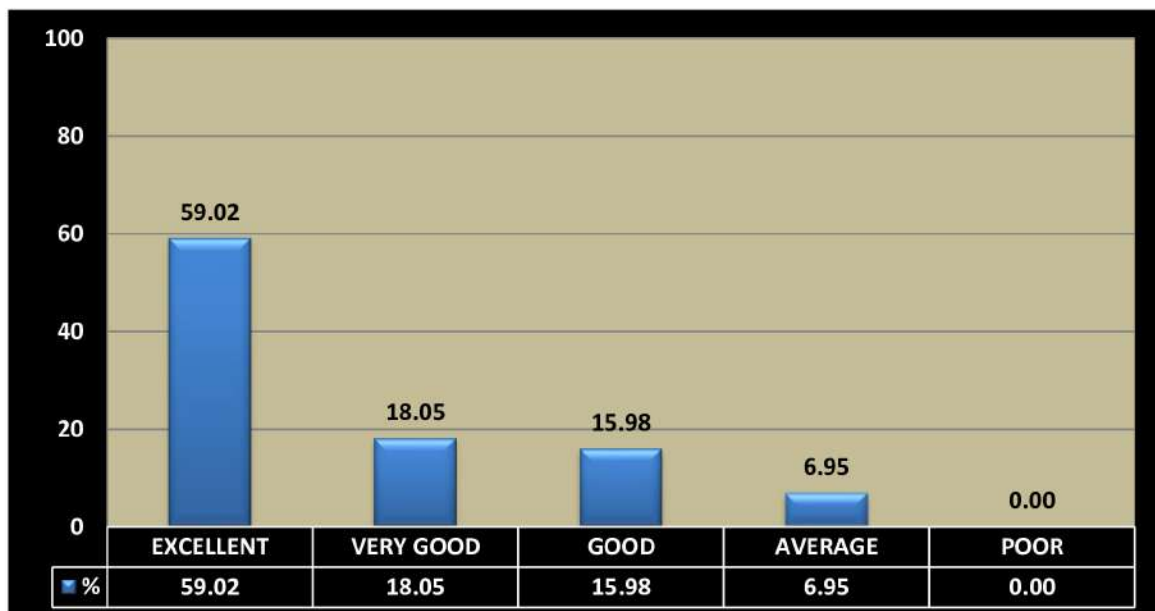
### ✓ Education imparted at SSMC in present scenario:



✓ **Placement opportunities On campus and Off campus provided by the college:**



✓ **Do you like to join the Institute Alumni Association?**



✓ How do you rate the Course content?

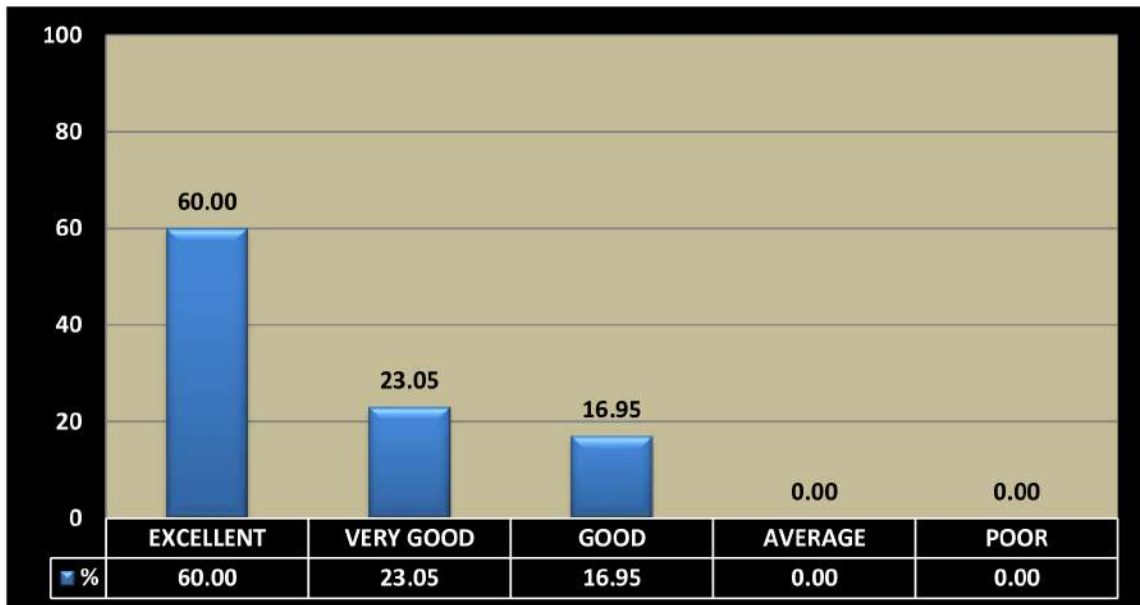


✓ How do you rate laboratories/library/seminar/reading room facilities?





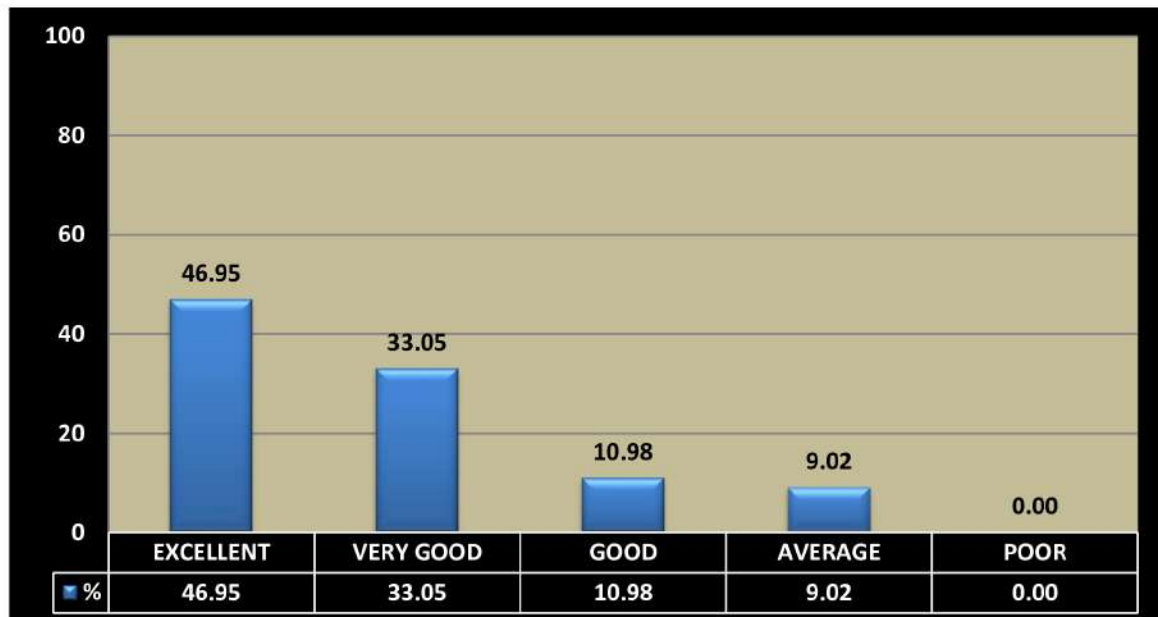
✓ How do you rate computer facilities:



✓ How do you rate Internet & Wi-Fi facilities?



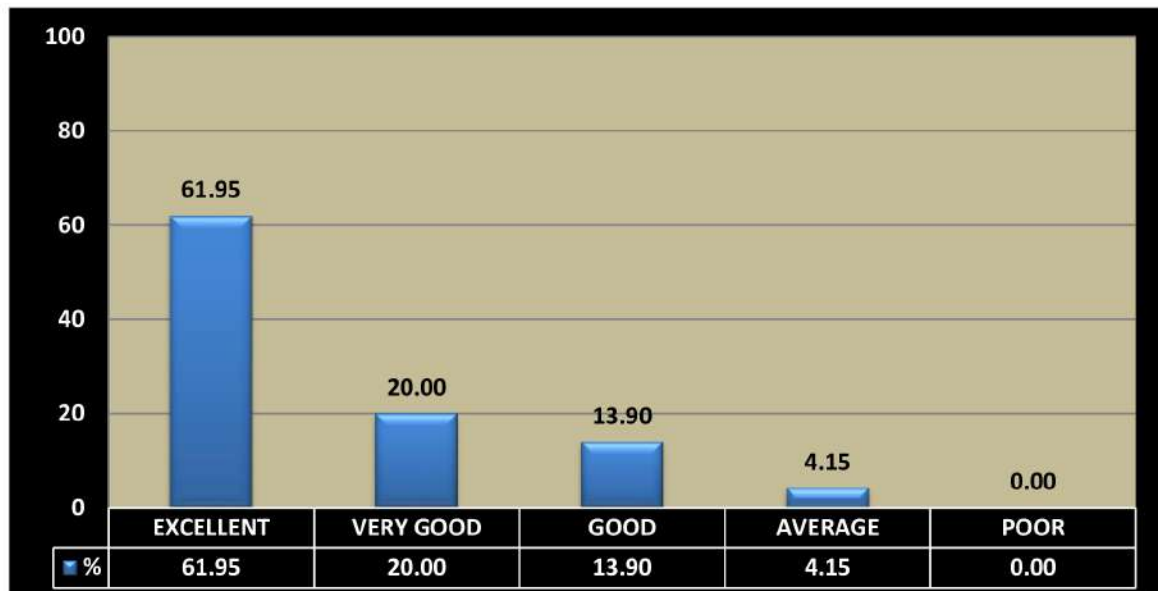
✓ How do you rate sport and cultural facilities?



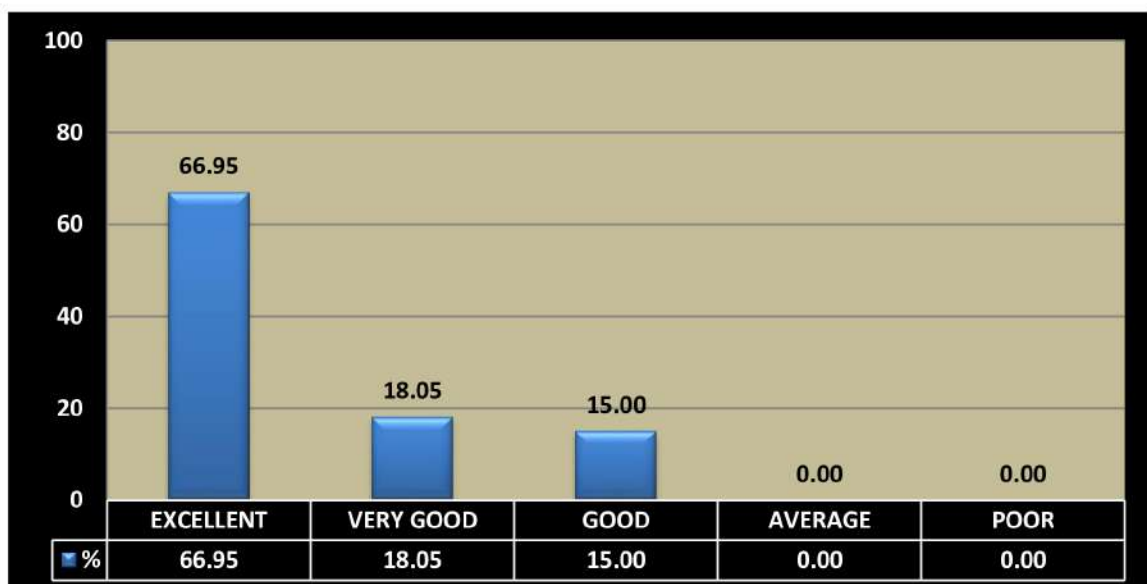
✓ How do you rate class room facilities?



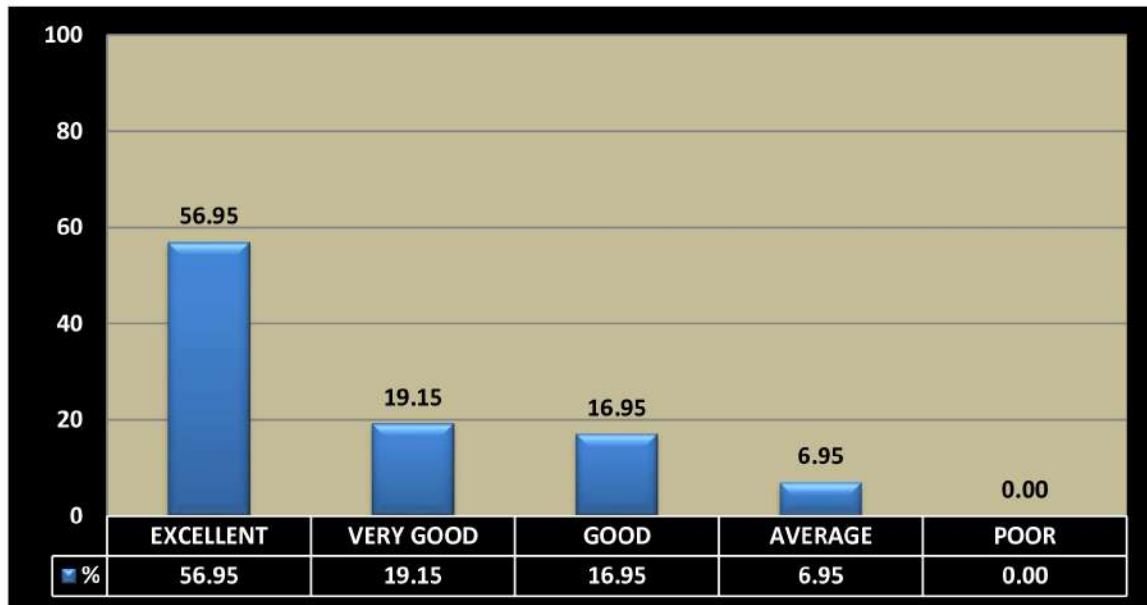
✓ How do you rate Canteen Facilities/ Hostel facilities?



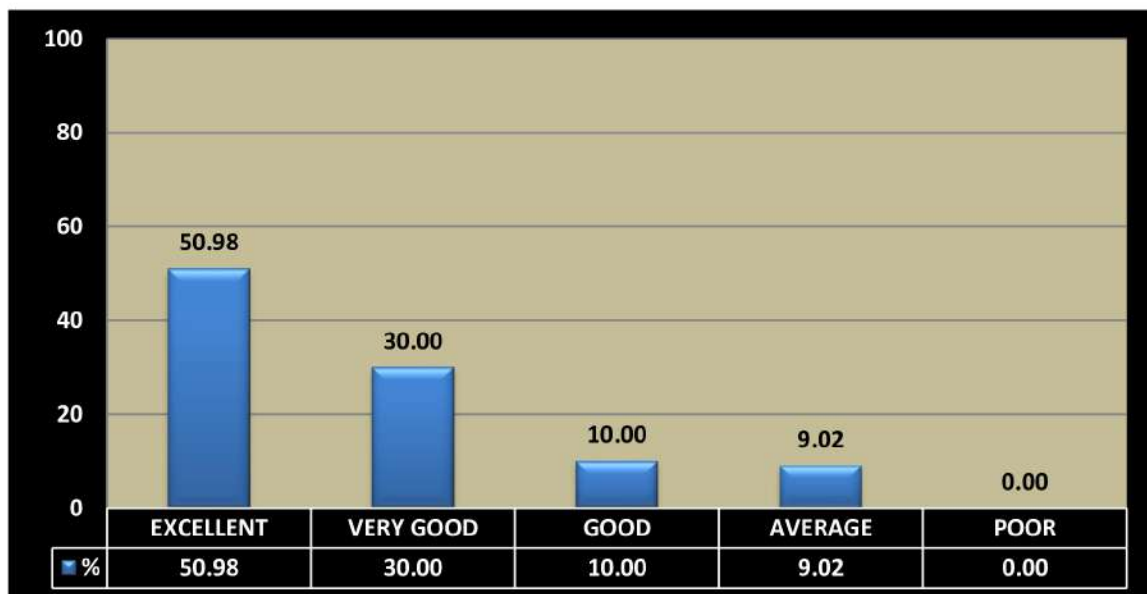
✓ How do you rate Overall Infrastructure of the college?



✓ Rate the adequate knowledge gained during your course of study.



✓ Have you availed career counseling and guidance for higher studies from T & P cell?



✓ Will you recommend your relative/friends to enroll at SSMC?



  
Principal  
SWAMI SWATANTRANAND MEMORIAL COLLEGE  
Dinanagar (Guntur)