



Swami Swatantranand Memorial College, Dinanagar

(Affiliated to G.N.D.U Amritsar | Accredited with 'A' Grade by NAAC)

Teacher's Feedback Analysis

Session: 2022-23

Overall Rating of Program of Study

Particulars	Excellent	Very Good	Good	Average	Poor	Total
Does the syllabus provide freedom to adopt new technique/ strategies of testing and assessment of students?	67	13	12	08	0	100
Is the syllabus designed to bridge the gap between theory/practical/ academics and industry?	62	25	09	04	0	100
Is the syllabus designed to improve employ ability index?	69	15	11	05	0	100
How do you rate the Labs facilities?	71	21	08	0	0	100
Is the academic environment in the college highly favorable?	63	17	13	07	0	100
Is the time-table of the college flexible and has scope for adjustment according to requirements?	72	18	09	01	0	100
Is the institution motivates participation in National and International Seminars / Conferences / workshops?	59	31	10	0	0	100
Does the institute take suggestions for improving teaching-learning in the meetings of the departments?	68	19	07	06	0	100
Is the infrastructure for IT applications in institution adequate and works effectively?	52	27	15	06	0	100

Does the college give opportunity to participate and contribute in various committees and forums?	65	21	08	04	0	100
Are the facilities (dispensary, Wi-Fi and canteen) in the college adequate and excellent?	72	13	10	05	0	100
Does the college provide opportunities for higher education and research?	68	14	12	04	0	100
Are there enough and relevant books for teachers and students in the college library?	59	26	12	3	0	100
Is the working environment in the college stress free and conducive?	63	16	15	6	0	100
Does the institution conduct various programs for the all-round development of the teachers?	74	16	10	0	0	100

- ✓ **Does the syllabus provide freedom to adopt new technique / strategies of testing and assessment of students?**



- ✓ **Is the syllabus designed to bridge the gap between theory/ practical /academics and industry?**



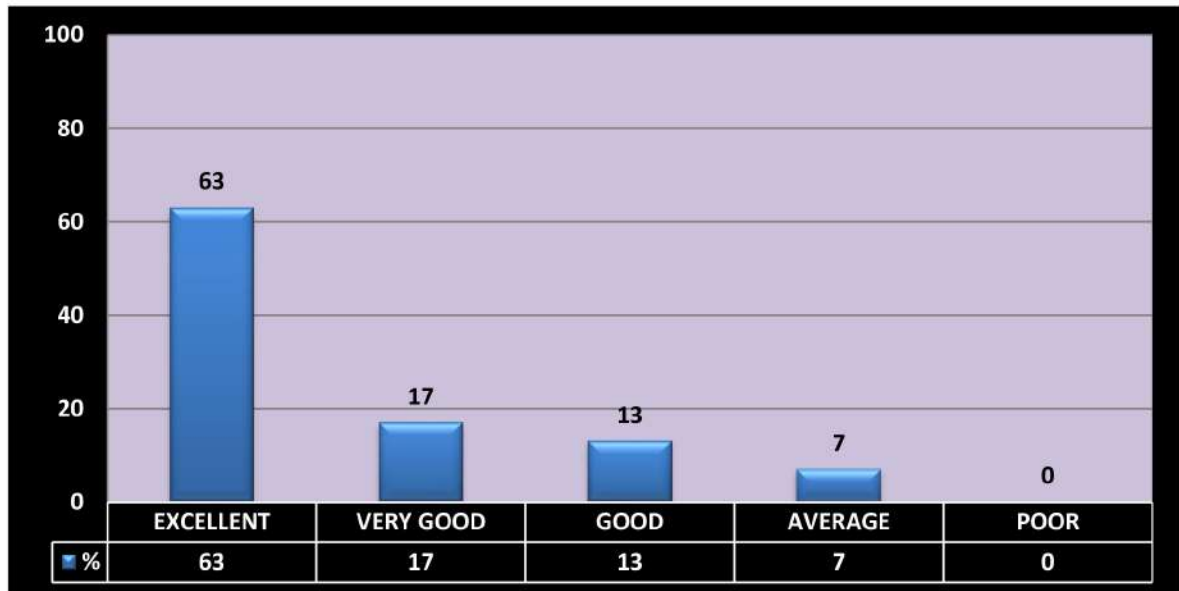
✓ **Is the syllabus designed to improve employ ability index?**



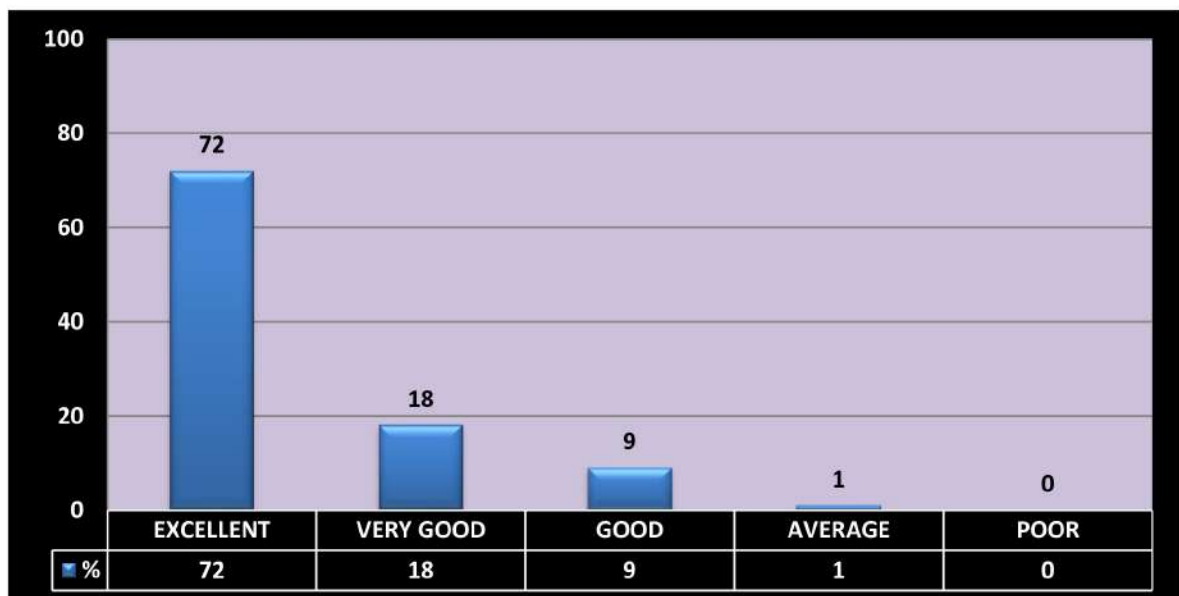
✓ **How do you rate the Labs facilities?**



✓ **Is the academic environment in the college highly favorable?**



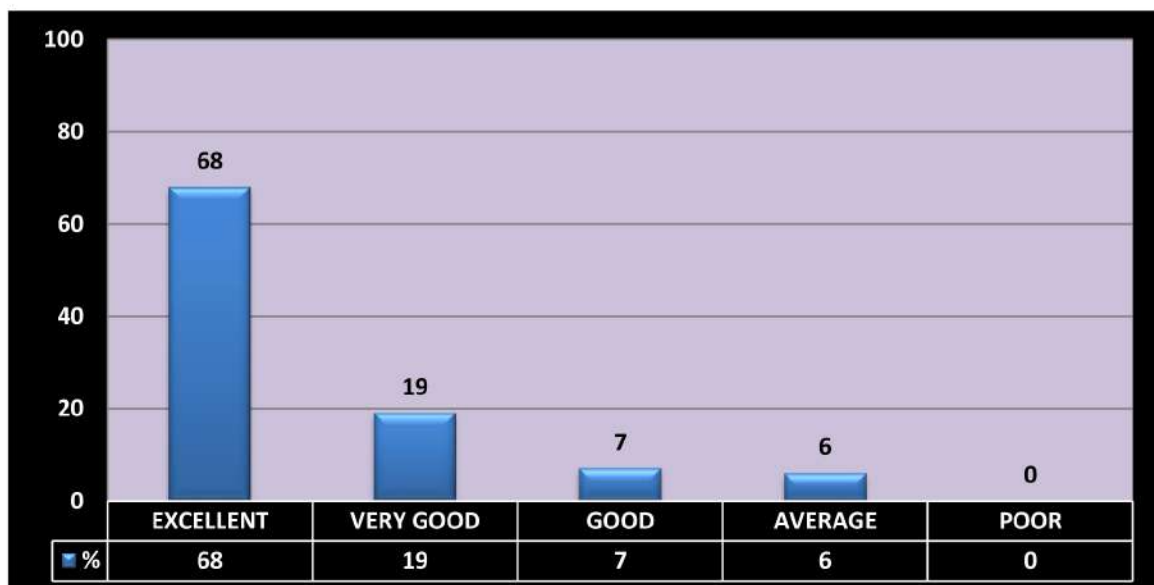
✓ **Is the time-table of the college flexible and has scope for adjustment according to requirements?**



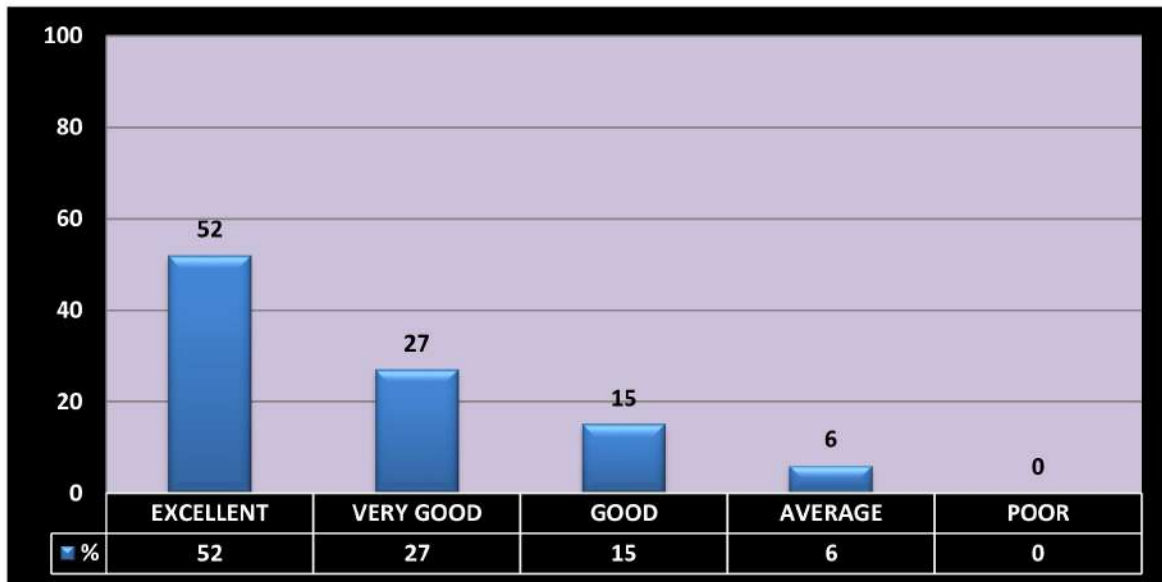
- ✓ **Is the institution motivates participation in National and International Seminars / Conferences /workshops?**



- ✓ **Does the institute take suggestions for improving teaching-learning in the meetings of the departments?**



- ✓ **Is the infrastructure or IT applications in institution adequate and works effectively?**



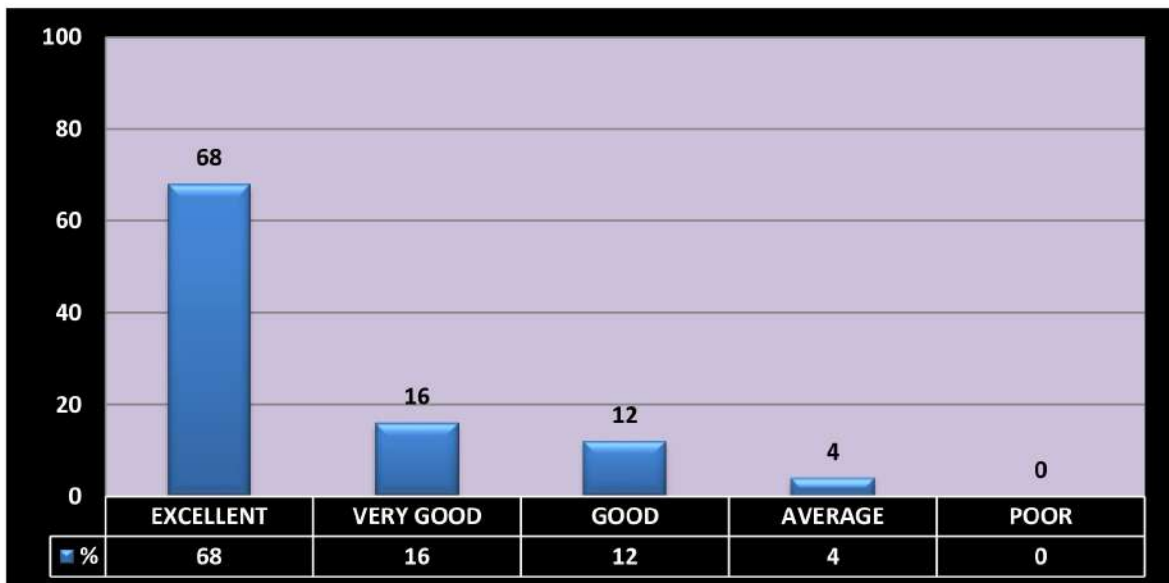
- ✓ **Does the college give opportunity to participate and contribute in various committees and forums?**



- ✓ **Are the facilities (dispensary, Wi-Fi and canteen) in the college adequate and excellent?**



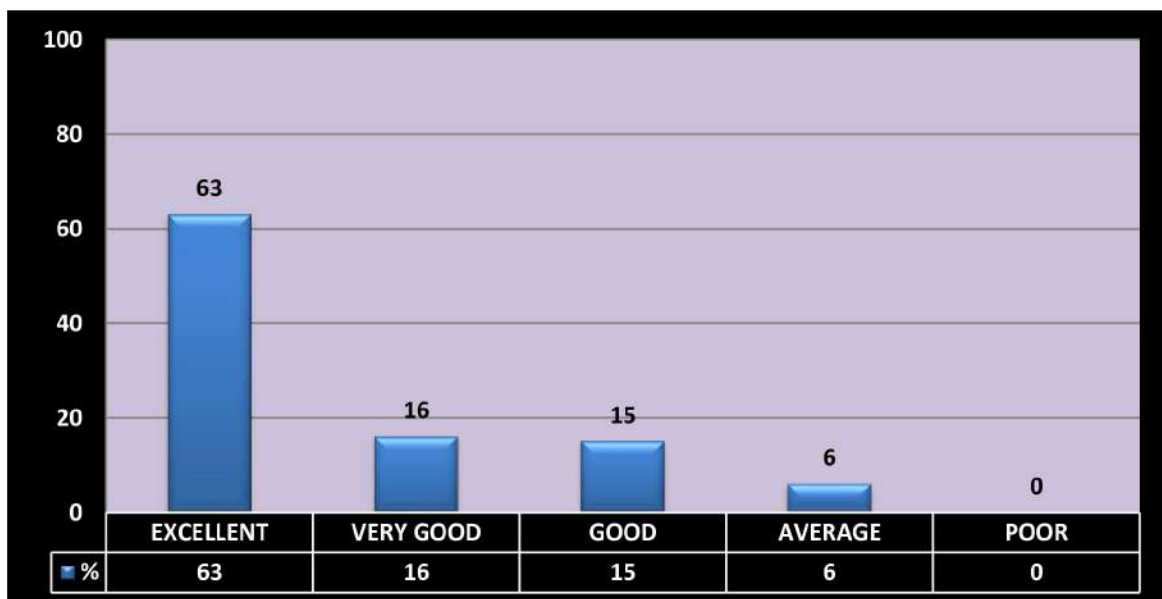
- ✓ **Does the college provide opportunities for higher education and research?**



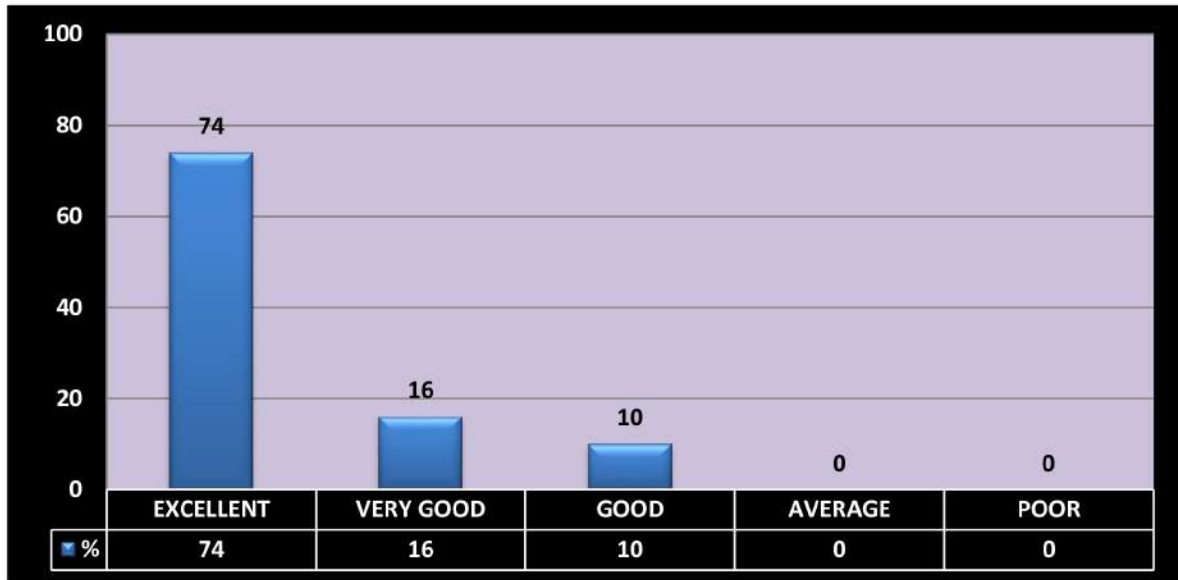
- ✓ **Are there enough and relevant books for teachers and students in the college library?**



- ✓ **Is the working environment in the college stress free and conducive?**



✓ Does the institution conduct various programs for the all-round development of the teachers?



[Handwritten Signature]
Principal
SWAMI SWATANTRAMAND MEMORIAL COLLEGE
Dinanagar (Gurdaspur)